

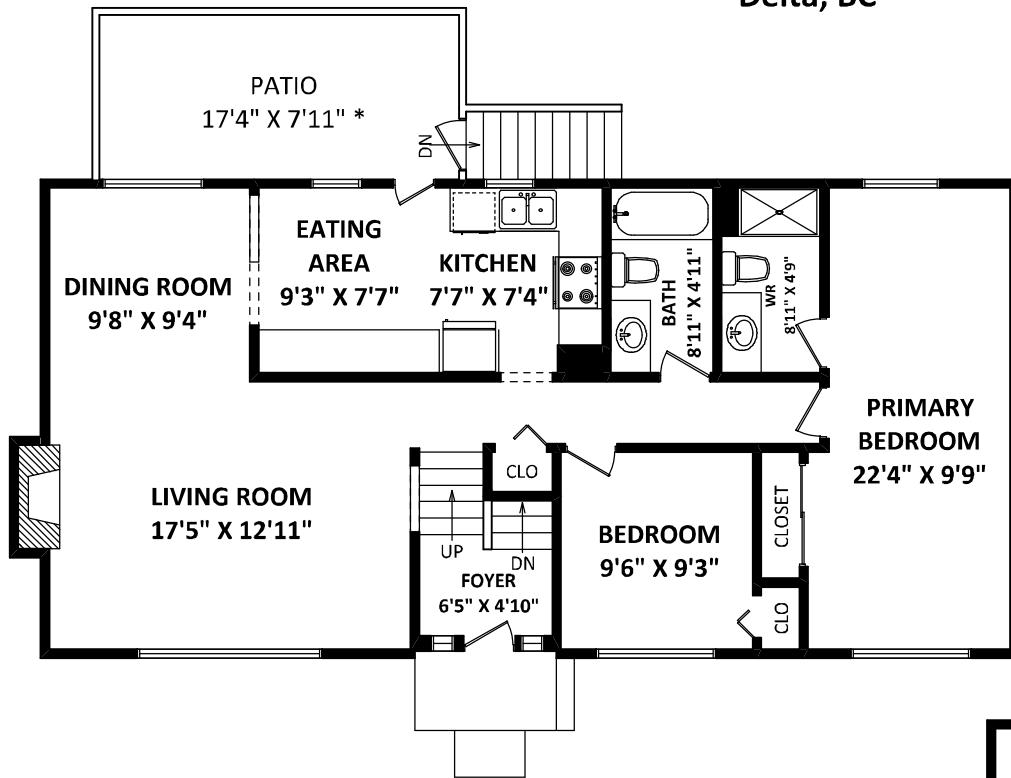
11831 95th Avenue  
Delta, BC



**KAREN CONYERS**  
Personal Real Estate Corporation,  
Senior Vice President, Sales

**WINSTON CONYERS**

Sotheby's International Realty Canada  
Cell: 604-240-3377  
kconyers@sothebysrealty.ca  
www.conyers.ca

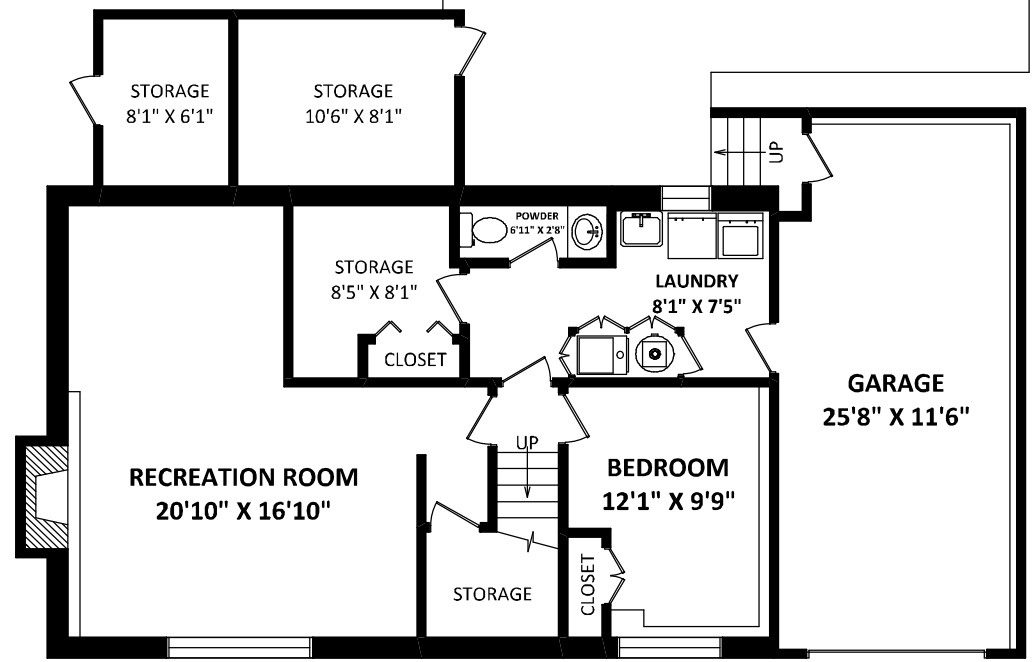


**MAIN FLOOR: 1087 SQ.FT.**

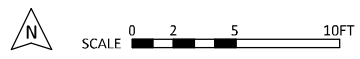
**TOTAL FINISHED AREA: 1888 SQ.FT.**

*OTHER AREA(S)*

GARAGE:	310 SQ.FT.
PATIO (MAIN FL.):	149 SQ.FT.*
PATIO (LOWER FL.):	690 SQ.FT.*
STORAGE (EXT.):	145 SQ.FT.*
GREENHOUSE:	103 SQ.FT.*



**LOWER FLOOR: 802 SQ.FT.**



DISCLAIMERS:  
1. MEASUREMENTS ARE FOR PROMOTIONAL USE ONLY & ARE NOT INTENDED FOR CONSTRUCTION USE. ROOM DIMENSIONS ARE APPROXIMATE. MEASUREMENTS & CALCULATIONS FOR FINISHED AREAS ARE E&O INSURED.  
2. FINISHED AREAS ARE ENCLOSED AREAS IN A HOUSE THAT ARE SUITABLE FOR YEAR-ROUND USE, EMBODYING WALLS, FLOORS, AND CEILINGS THAT ARE SIMILAR TO THE REST OF THE HOUSE. (ANSI Z765-2013)  
3. FOR DETACHED SINGLE-FAMILY HOUSES, THE FINISHED SQUARE FOOTAGE OF EACH LEVEL IS CALCULATED TO THE EXTERIOR FINISHED SURFACE OF THE OUTSIDE WALLS. (ANSI Z765-2013)  
4. THIS FLOOR PLAN MAY ONLY BE REPRODUCED WITH PERMISSION OF THE REALTOR(S) ON THIS FLOOR PLAN.  
\*ANY MEASUREMENTS WITH AN ASTERISK (\*) ARE APPROXIMATE AND FOR ILLUSTRATION PURPOSES ONLY AND ARE NOT E&O INSURED.