



LAUREN KENT & JILL WIERSMA

RE/MAX Masters Realty
Lauren: 604-671-6115
Jill: 604-341-1411
lauren@laurenkent.ca
jillw@telus.net
www.laurenandjill.com



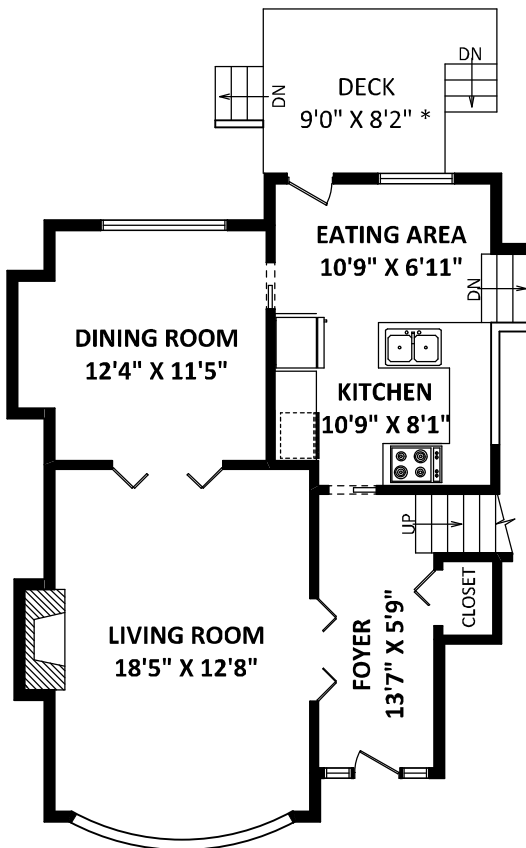
1460 Haywood Avenue West Vancouver, BC

SHED
5'9" X 5'9" *

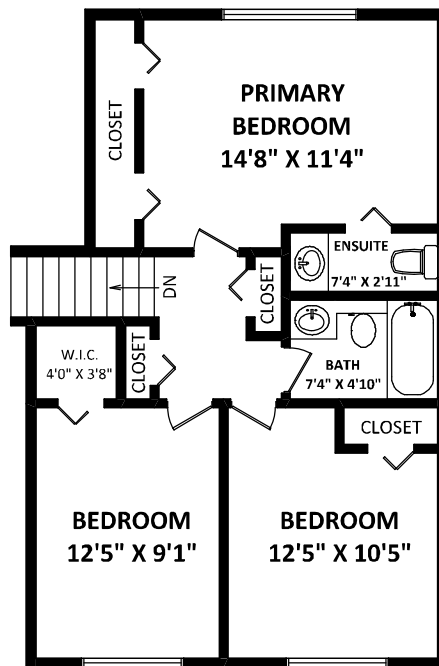
TOTAL FINISHED AREA: 1925 SQ.FT.

OTHER AREA(S)

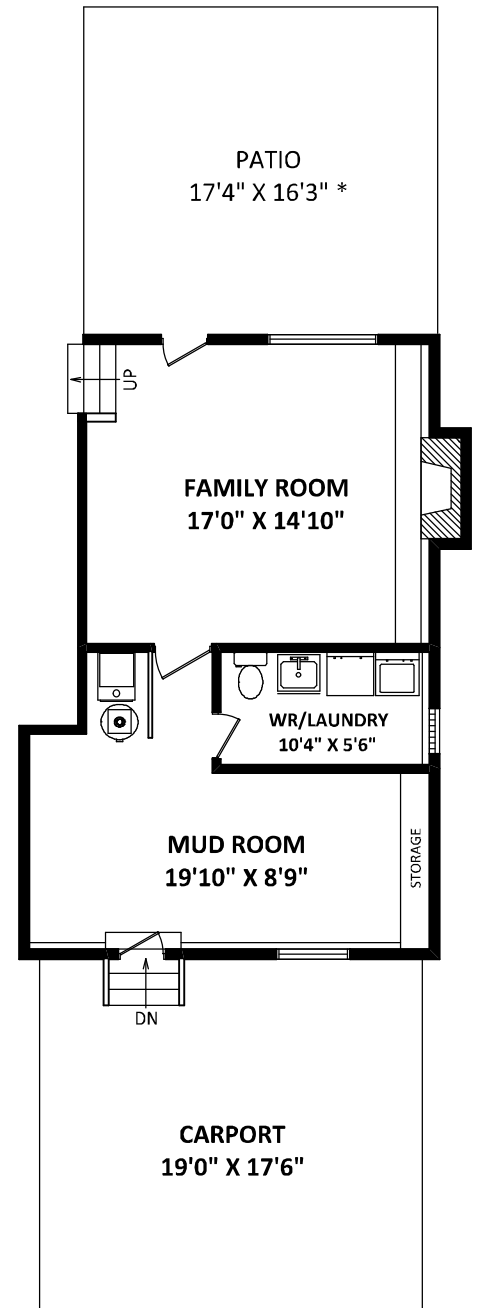
CARPORT: 333 SQ.FT.
DECK: 81 SQ.FT.*
PATIO: 285 SQ.FT.*
SHED: 37 SQ.FT.*



MAIN FLOOR: 682 SQ.FT.



UPPER FLOOR: 652 SQ.FT.



LOWER FLOOR: 591 SQ.FT.



SCALE 0 2 5 10 FT

[JULY 13, 2023]



TEL: 604-575-1244
www.seevirtual360.com

DISCLAIMERS:

1. MEASUREMENTS ARE FOR PROMOTIONAL USE ONLY & ARE NOT INTENDED FOR CONSTRUCTION USE. ROOM DIMENSIONS ARE APPROXIMATE. MEASUREMENTS & CALCULATIONS FOR FINISHED AREAS ARE E&O INSURED.
 2. FINISHED AREAS ARE ENCLOSED AREAS IN A HOUSE THAT ARE SUITABLE FOR YEAR-ROUND USE, EMBODYING WALLS, FLOORS, AND CEILINGS THAT ARE SIMILAR TO THE REST OF THE HOUSE. (ANSI Z765-2013)
 3. FOR DETACHED SINGLE-FAMILY HOUSES, THE FINISHED SQUARE FOOTAGE OF EACH LEVEL IS CALCULATED TO THE EXTERIOR FINISHED SURFACE OF THE OUTSIDE WALLS. (ANSI Z765-2013)
 4. THIS FLOOR PLAN MAY ONLY BE REPRODUCED WITH PERMISSION OF THE REALTOR(S) ON THIS FLOOR PLAN.
- * ANY MEASUREMENTS WITH AN ASTERISK (*) ARE APPROXIMATE AND FOR ILLUSTRATION PURPOSES ONLY AND ARE NOT E&O INSURED.