

# 104-2970 Princess Crescent Coquitlam, BC



## WyantCraig Real Estate Group

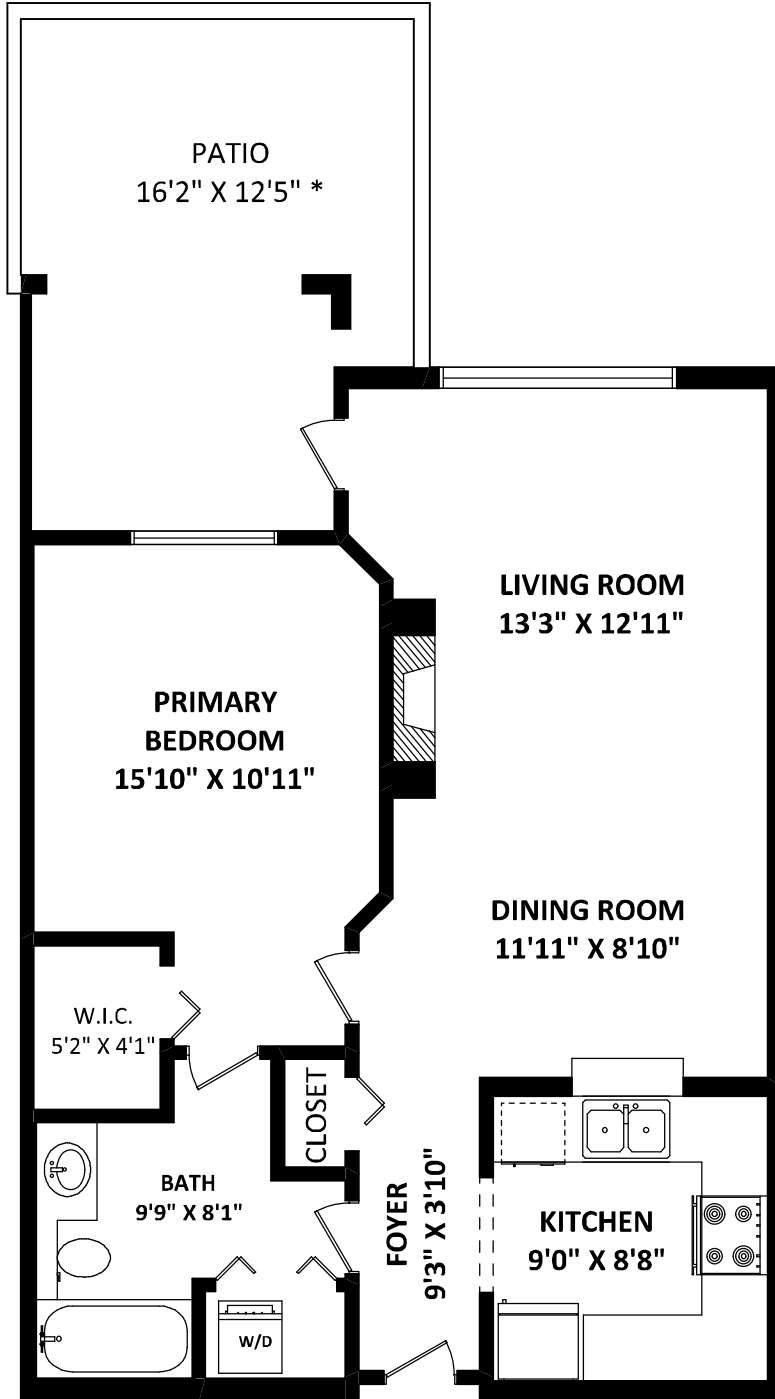
eXp Realty

Phone: 604-460-2831

sandra@wyantcraig.com

josh@wyantcraig.com

www.wyantcraig.com



**TOTAL FINISHED AREA: 718 SQ.FT.**

*OTHER AREA(S)*

PATIO: 193 SQ.FT.\*



[JUNE 19, 2023]



TEL: 604-575-1244

www.seevirtual360.com

#### DISCLAIMERS:

1. MEASUREMENTS ARE FOR PROMOTIONAL USE ONLY & ARE NOT INTENDED FOR CONSTRUCTION USE. ROOM DIMENSIONS ARE APPROXIMATE. MEASUREMENTS & CALCULATIONS FOR FINISHED AREAS ARE E&O INSURED.
  2. FINISHED AREAS ARE ENCLOSED AREAS IN A HOUSE THAT ARE SUITABLE FOR YEAR-ROUND USE, EMBODYING WALLS, FLOORS, AND CEILINGS THAT ARE SIMILAR TO THE REST OF THE HOUSE. (ANSI Z765-2013)
  3. FOR STRATA LOTS, SQUARE FOOTAGE OF EACH LEVEL IS CALCULATED FROM THE CENTERLINE OF THE EXTERIOR WALLS OR SHARED WALLS OF THE STRATA LOT TO THE CENTERLINE OF THE EXTERIOR WALLS OR SHARED WALLS OF THE ADJACENT STRATA LOTS. (REF. STRATA PROPERTY ACT, SECTION 68)
  4. THIS FLOOR PLAN MAY ONLY BE REPRODUCED WITH PERMISSION OF THE REALTOR(S) ON THIS FLOOR PLAN.
- \* ANY MEASUREMENTS WITH AN ASTERISK (\*) ARE APPROXIMATE AND FOR ILLUSTRATION PURPOSES ONLY AND ARE NOT E&O INSURED.