

**195 Isleview Place
Lions Bay, BC**



KIM TAYLOR

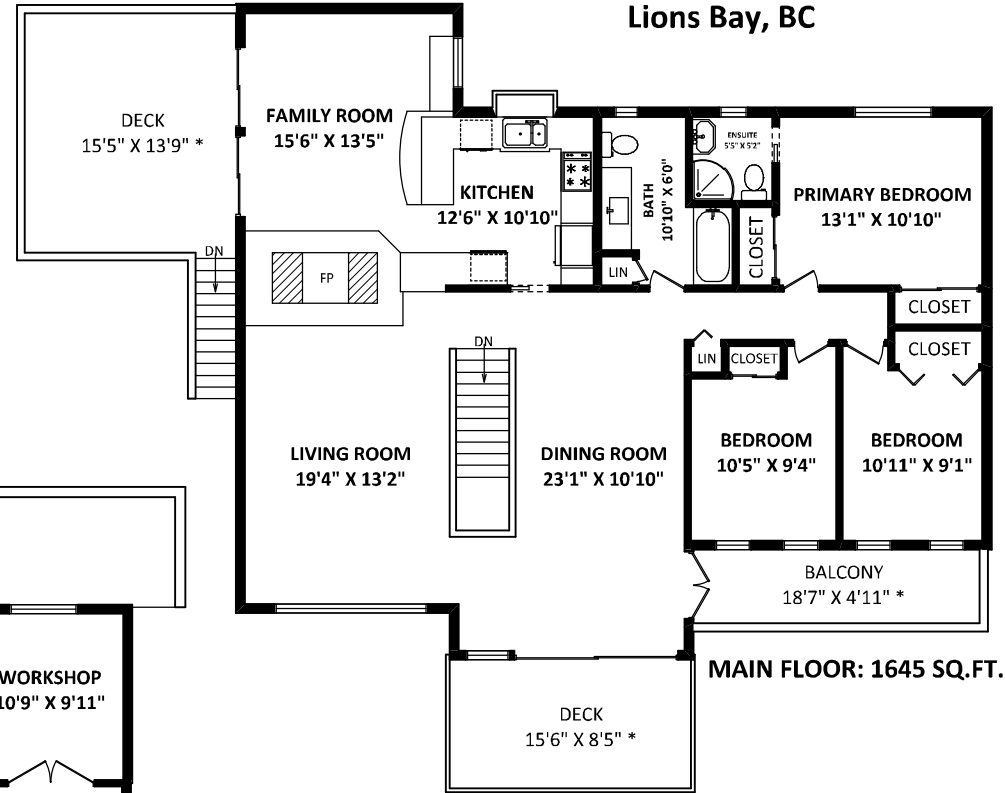
Rennie & Associates Realty Ltd.
Cell: 604-315-2645
kim@kimtaylorhomes.com
www.kimtaylorhomes.com

TOTAL FLOOR AREA: 2729 SQ.FT.

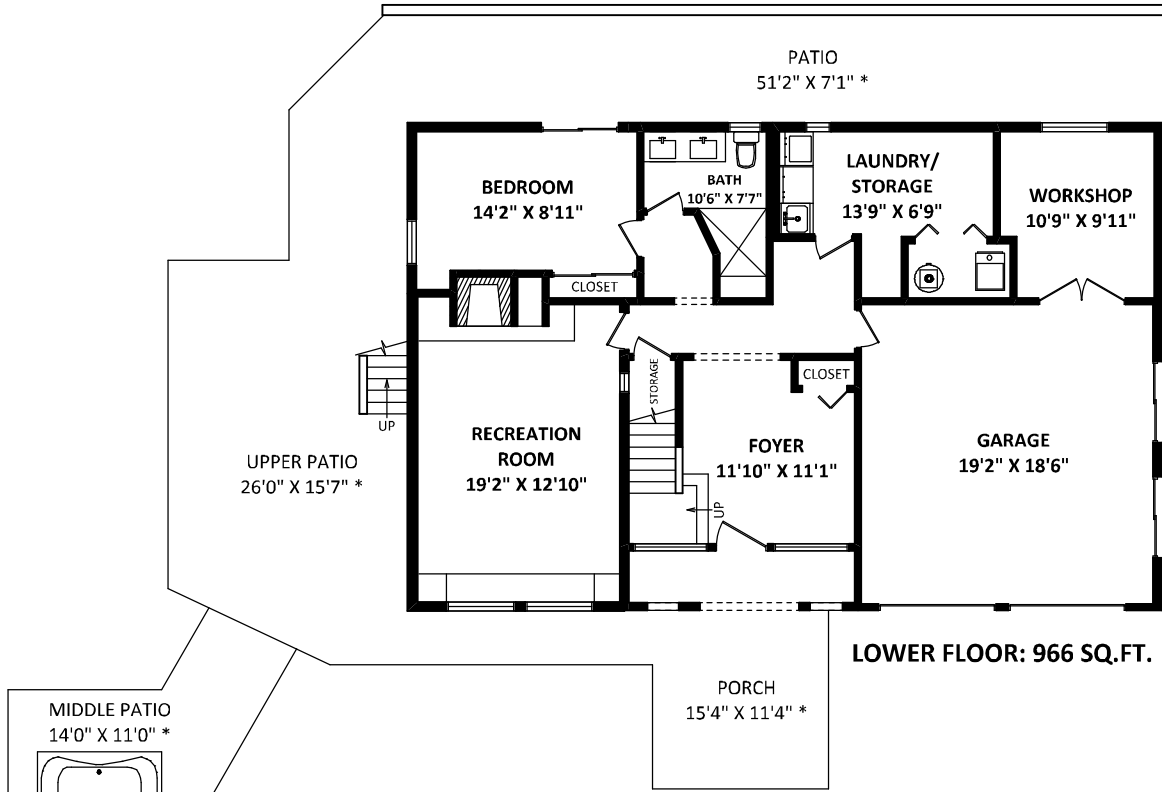
FINISHED AREA: 2611 SQ.FT.
WORKSHOP: 118 SQ.FT.

OTHER AREA(S)

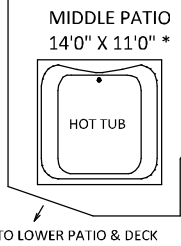
GARAGE: 379 SQ.FT.
PORCH: 189 SQ.FT.*
UPPER PATIO: 867 SQ.FT.*
MIDDLE PATIO: 140 SQ.FT.*
LOWER PATIO: 120 SQ.FT.*
LOWER DECK: 257 SQ.FT.*
DECK (FRONT): 139 SQ.FT.*
DECK (SIDE): 241 SQ.FT.*
BALCONY: 103 SQ.FT.*



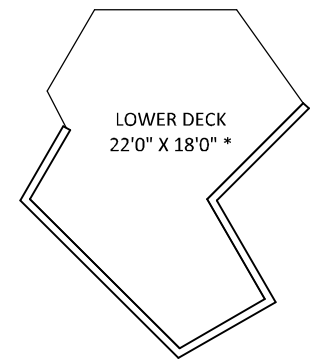
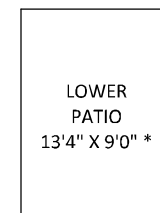
MAIN FLOOR: 1645 SQ.FT.



LOWER FLOOR: 966 SQ.FT.



TO LOWER PATIO & DECK



[MAY 23, 2023]
SEEVIRTUAL
TEL: 604-575-1244
www.seevirtual360.com

DISCLAIMERS:
1. MEASUREMENTS ARE FOR PROMOTIONAL USE ONLY & ARE NOT INTENDED FOR CONSTRUCTION USE. ROOM DIMENSIONS ARE APPROXIMATE. MEASUREMENTS & CALCULATIONS FOR FINISHED AREAS ARE F&O INSURED.
2. FINISHED AREAS ARE ENCLOSED AREAS IN A HOUSE THAT ARE SUITABLE FOR YEAR-ROUND USE, EMBODYING WALLS, FLOORS, AND CEILINGS THAT ARE SUITABLE TO THE REST OF THE HOUSE. (ANSI Z750-7013)
3. FOR DETACHED SINGLE-FAMILY HOUSES, THE FINISHED SQUARE FOOTAGE OF EACH LEVEL IS CALCULATED TO THE EXTERIOR FINISHED SURFACE OF THE OUTSIDE WALLS. (ANSI Z750-7013)
4. THIS FLOOR PLAN MAY ONLY BE REPRODUCED WITH PERMISSION OF THE REALTOR(S) ON THIS FLOOR PLAN.
* ANY MEASUREMENTS WITH AN ASTRISK (*) ARE APPROXIMATE AND FOR ILLUSTRATION PURPOSES ONLY AND ARE NOT F&O INSURED.