

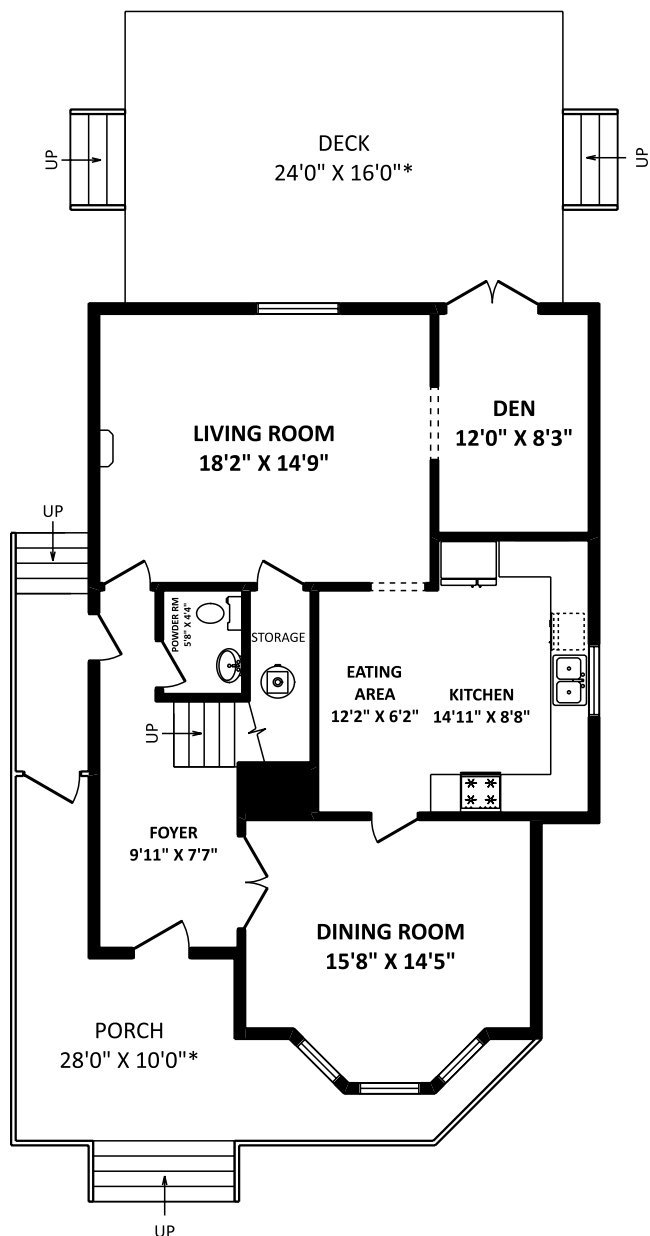


**CAROLYN CARSON**  
PERSONAL REAL ESTATE CORPORATION



Call or Text: 778.878.4687 | E: choosecarolyn@gmail.com | W: choosecarolyn.com

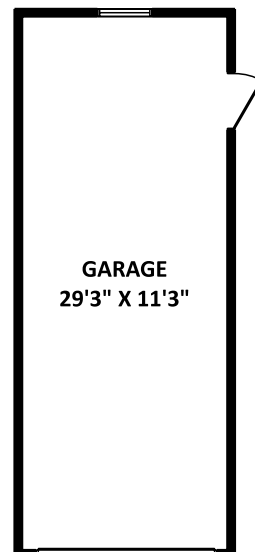
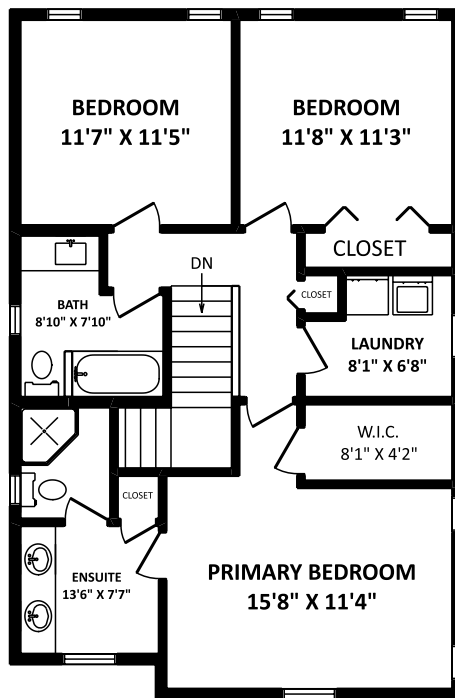
**6755 Worthington Place  
Chilliwack, BC**



**TOTAL FINISHED AREA: 2004 SQ.FT.**

*OTHER AREA(S)*

GARAGE: 364 SQ.FT.  
DECK(S): 384 SQ.FT.\*  
PORCH: 268 SQ.FT.\*



**MAIN FLOOR: 1080 SQ.FT.**



JUNE 2, 2023



TEL: 604-575-1244  
www.seevirtual360.com

**DISCLAIMERS:**

1. MEASUREMENTS ARE FOR PROMOTIONAL USE ONLY & ARE NOT INTENDED FOR CONSTRUCTION USE. ROOM DIMENSIONS ARE APPROXIMATE. MEASUREMENTS & CALCULATIONS FOR FINISHED AREAS ARE E&O INSURED.
  2. FINISHED AREAS ARE ENCLOSED AREAS IN A HOUSE THAT ARE SUITABLE FOR YEAR-ROUND USE, EMBODYING WALLS, FLOORS, AND CEILINGS THAT ARE SIMILAR TO THE REST OF THE HOUSE. (ANSI Z765-2013)
  3. FOR DETACHED SINGLE-FAMILY HOUSES, THE FINISHED SQUARE FOOTAGE OF EACH LEVEL IS CALCULATED TO THE EXTERIOR FINISHED SURFACE OF THE OUTSIDE WALLS. (ANSI Z765-2013)
  4. THIS FLOOR PLAN MAY ONLY BE REPRODUCED WITH PERMISSION OF THE REALTOR(S) ON THIS FLOOR PLAN.
- \* ANY MEASUREMENTS WITH AN ASTERISK (\*) OR (APPROX) ARE APPROXIMATE AND FOR ILLUSTRATION PURPOSES ONLY AND ARE NOT E&O INSURED.

SCALE 0 2 5 10FT