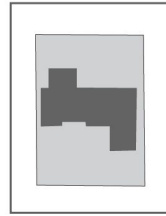


15952 112 Avenue,  
Surrey, B.C.

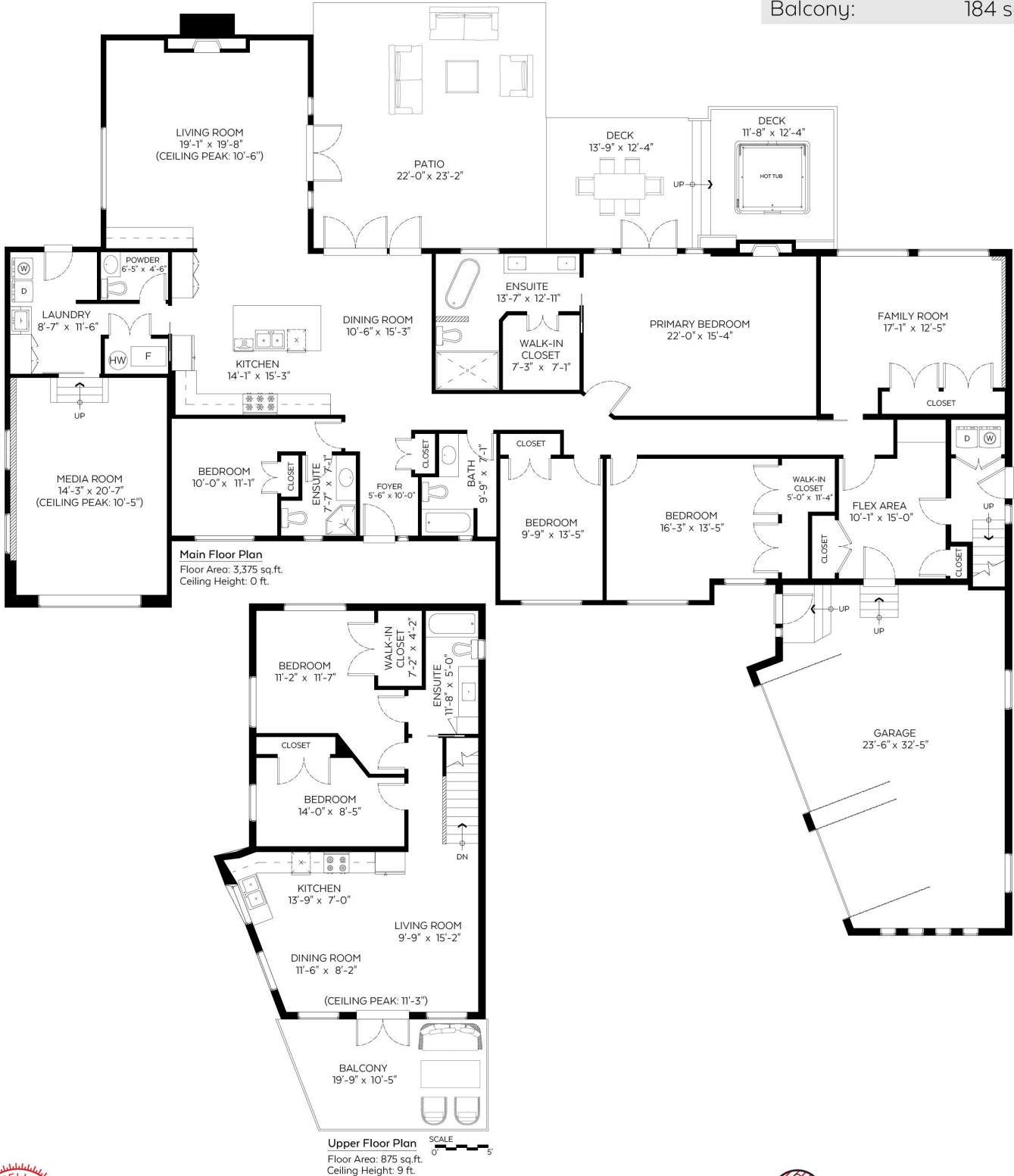


PROPERTY LEGEND

Main Floor:	3,375 sq.ft.
Upper Floor:	875 sq.ft.
<b>Total:</b>	<b>4,250 sq.ft.</b>

**Auxiliary Area**

Garage:	686 sq.ft.
Patio:	510 sq.ft.
Deck:	331 sq.ft.
Balcony:	184 sq.ft.



**Main Floor Plan**  
Floor Area: 3,375 sq.ft.  
Ceiling Height: 0 ft.

**Upper Floor Plan**  
Floor Area: 875 sq.ft.  
Ceiling Height: 9 ft.



Valid Until: October 3, 2023

The floor plan is not suitable for architectural/construction and is covered under E&O. © Excelsior Measuring Inc. 2022. All rights reserved for Excelsior Measuring Inc. Users shall not publish and distribute such material (in whole or in part) and/or incorporate it in other works in any form.



NORTH

Booked on  
the Pixlink App™

