



TONY HEPBURN

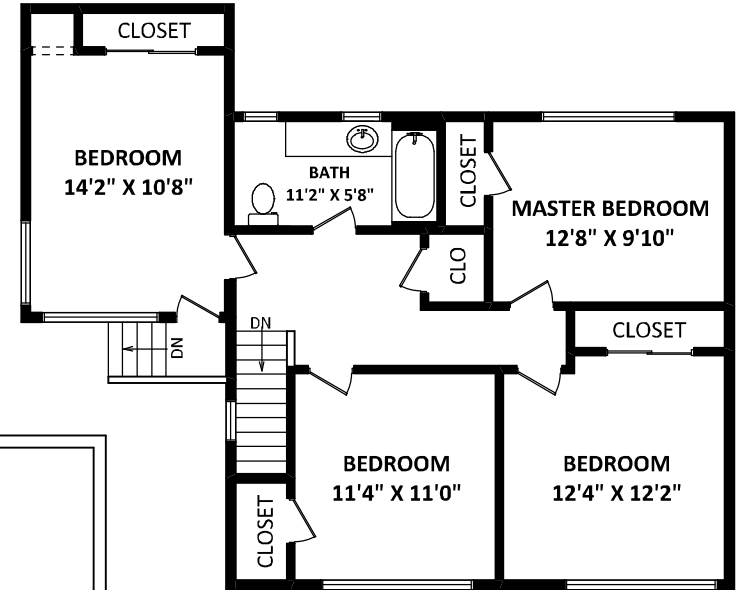
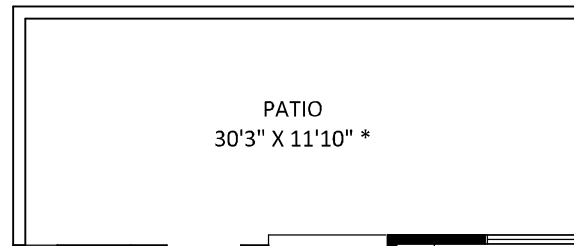
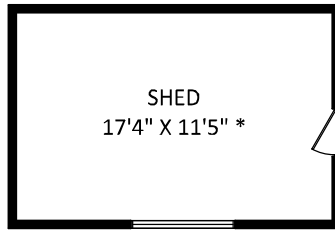
RE/MAX Crest Realty
Cell: 604-506-3883
Office: 604-732-1336
Tony@HepburnProperties.com
www.HepburnProperties.com

**2767 West 36th Avenue
Vancouver, BC**

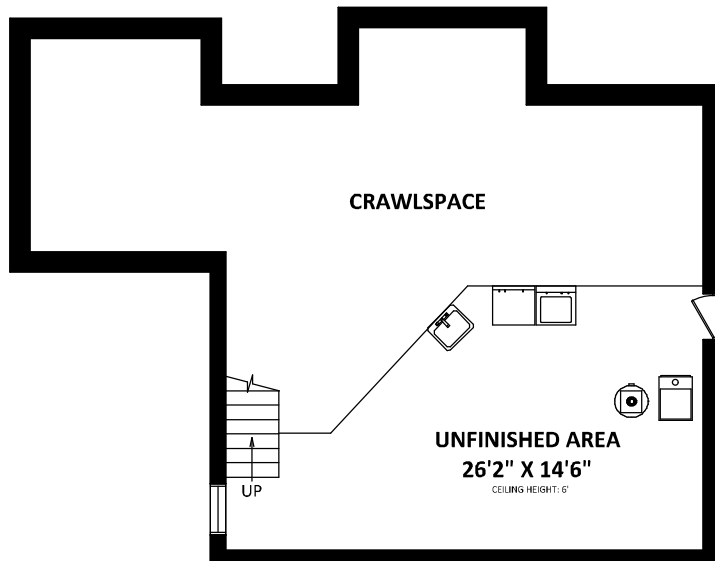
TOTAL FLOOR AREA: 2189 SQ.FT.
FINISHED AREA(S): 1859 SQ.FT.
UNFINISHED AREA(S): 330 SQ.FT.

OTHER AREA(S)

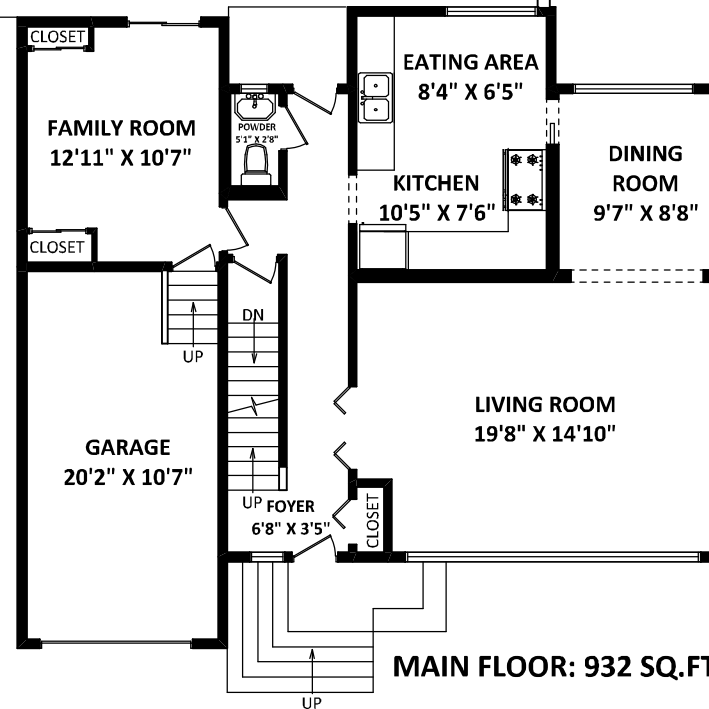
GARAGE: 230 SQ.FT.
PATIO: 403 SQ.FT.*
SHED: 223 SQ.FT.*



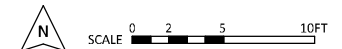
UPPER FLOOR: 927 SQ.FT.



LOWER FLOOR: 330 SQ.FT.
(UNFINISHED AREA)



MAIN FLOOR: 932 SQ.FT.



[NOVEMBER 7, 2022]



TEL: 604-575-1244
www.seevirtual360.com

DISCLAIMERS:
1. MEASUREMENTS ARE FOR PROMOTIONAL USE ONLY & ARE NOT INTENDED FOR CONSTRUCTION USE. ROOM DIMENSIONS ARE APPROXIMATE. MEASUREMENTS & CALCULATIONS FOR FINISHED AREAS ARE E&O INSURED.
2. FINISHED AREAS ARE ENCLOSED AREAS IN A HOUSE THAT ARE SUITABLE FOR YEAR-ROUND USE, EMBODYING WALLS, FLOORS, AND CEILINGS THAT ARE SIMILAR TO THE REST OF THE HOUSE. (ANSI Z765-2013)
3. FOR DETACHED SINGLE-FAMILY HOUSES, THE FINISHED SQUARE FOOTAGE OF EACH LEVEL IS CALCULATED TO THE EXTERIOR FINISHED SURFACE OF THE OUTSIDE WALLS. (ANSI Z765-2013)
4. THIS FLOOR PLAN MAY ONLY BE REPRODUCED WITH PERMISSION OF THE REALTOR(S) ON THIS FLOOR PLAN.
* ANY MEASUREMENTS WITH AN ASTERISK (*) ARE APPROXIMATE AND FOR ILLUSTRATION PURPOSES ONLY AND ARE NOT E&O INSURED.