



Real Broker B.C. Ltd. - Vancouver
 Cell: 778-996-1922
 Office: 250-999-9822
 craig@craigveroni.ca
 www.craigveroni.ca

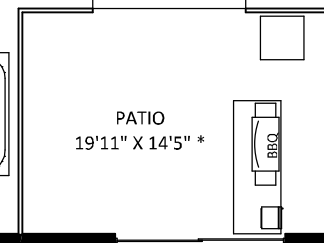
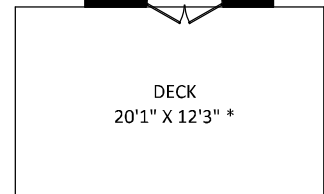
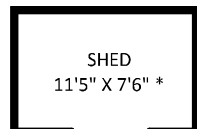
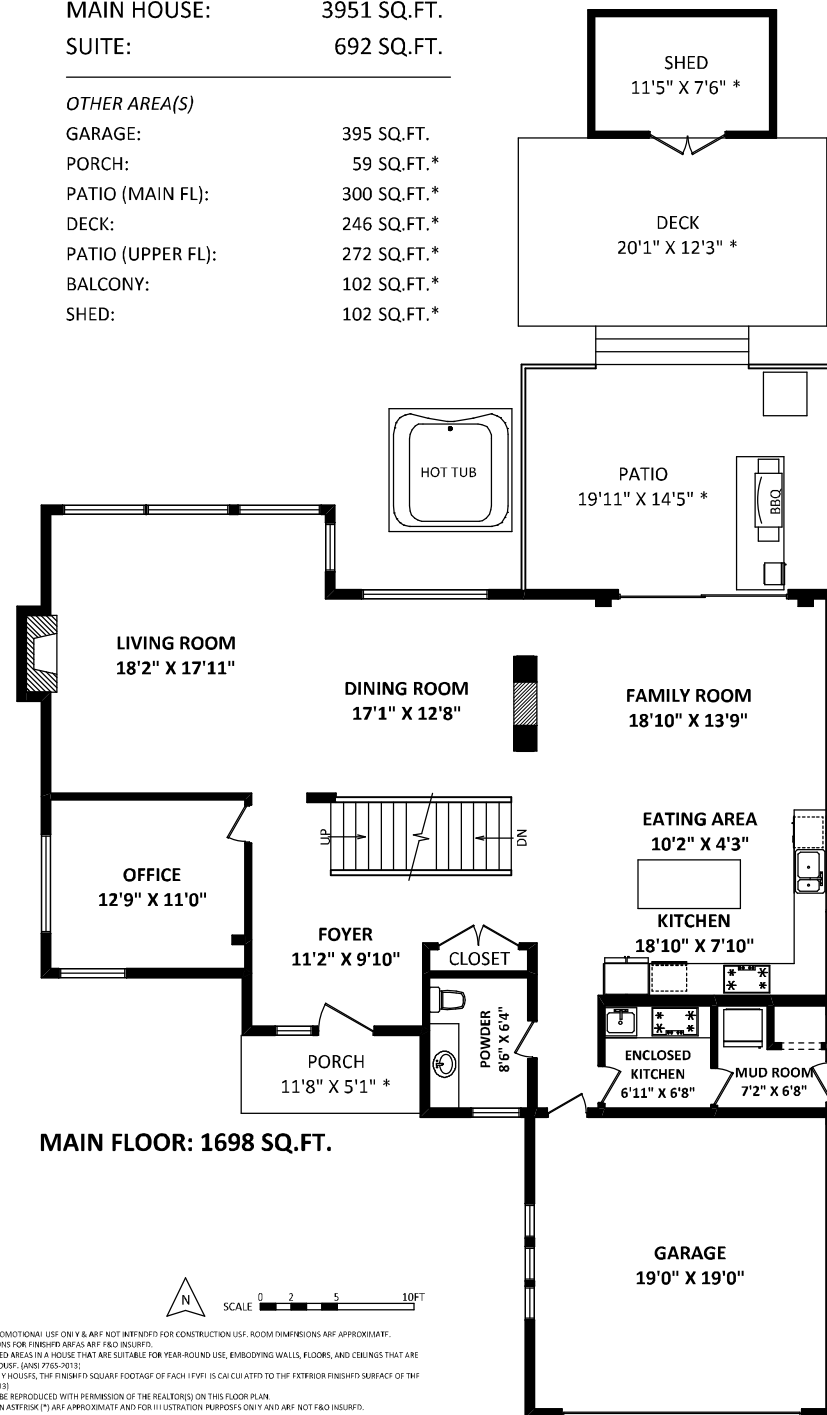
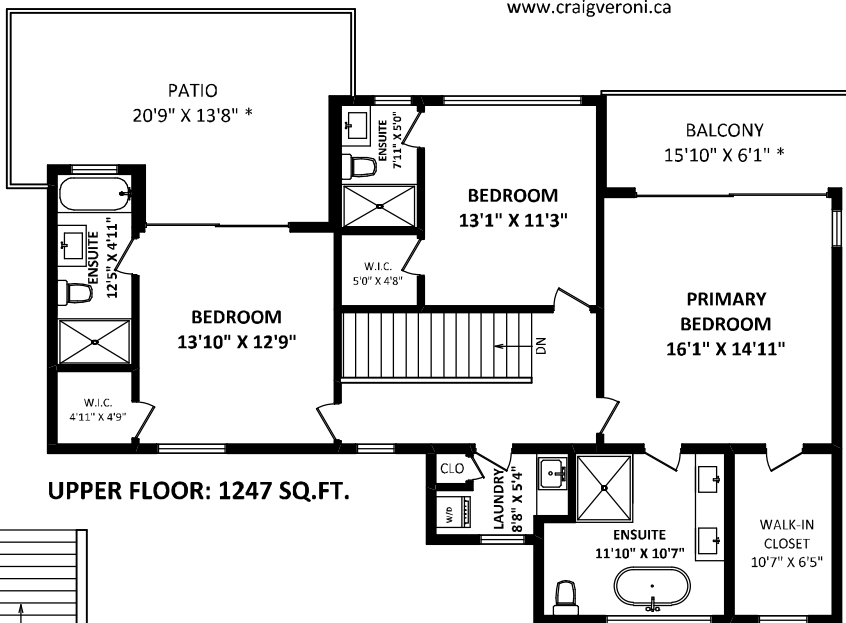
503 Creswood Avenue
 North Vancouver, BC

TOTAL FINISHED AREA: 4643 SQ.FT.

MAIN HOUSE: 3951 SQ.FT.
 SUITE: 692 SQ.FT.

OTHER AREA(S)

GARAGE: 395 SQ.FT.
 PORCH: 59 SQ.FT.*
 PATIO (MAIN FL): 300 SQ.FT.*
 DECK: 246 SQ.FT.*
 PATIO (UPPER FL): 272 SQ.FT.*
 BALCONY: 102 SQ.FT.*
 SHED: 102 SQ.FT.*



LOWER FLOOR: 1698 SQ.FT.

MAIN HOUSE: 1006 SQ.FT.

SUITE: 692 SQ.FT.

[JANUARY 29, 2023]



TEL: 604-575-1244
 www.seevirtual360.com

DISCLAIMERS:

1. MEASUREMENTS ARE FOR INFORMATIONAL USE ONLY & ARE NOT INTENDED FOR CONSTRUCTION USE. ROOM DIMENSIONS ARE APPROXIMATE. MEASUREMENTS & CALCULATIONS FOR FINISHED AREAS ARE FIELD MEASUREMENTS.
2. FINISHED AREAS ARE ENCLOSED AREAS IN A HOUSE THAT ARE SUITABLE FOR YEAR-ROUND USE, EMBODYING WALLS, FLOORS, AND CEILINGS THAT ARE SIMILAR TO THE REST OF THE HOUSE. (ANSI Z765-2013)
3. FOR DETACHED SINGLE-FAMILY HOUSES, THE FINISHED SQUARE FOOTAGE OF EACH LEVEL IS CALCULATED TO THE EXTERIOR FINISHED SURFACE OF THE OUTSIDE WALLS. (ANSI Z765-2013)
4. THIS FLOOR PLAN MAY ONLY BE REPRODUCED WITH PERMISSION OF THE REALTOR(S) ON THIS FLOOR PLAN.
- * ALL MEASUREMENTS WITH AN APOSTROPH (*) ARE APPROXIMATE AND FOR ILLUSTRATION PURPOSES ONLY AND ARE NOT FIELD MEASUREMENTS.



SCALE 0 2 5 10 FT