



TAMMY SHARP  
PERSONAL REAL ESTATE CORPORATION

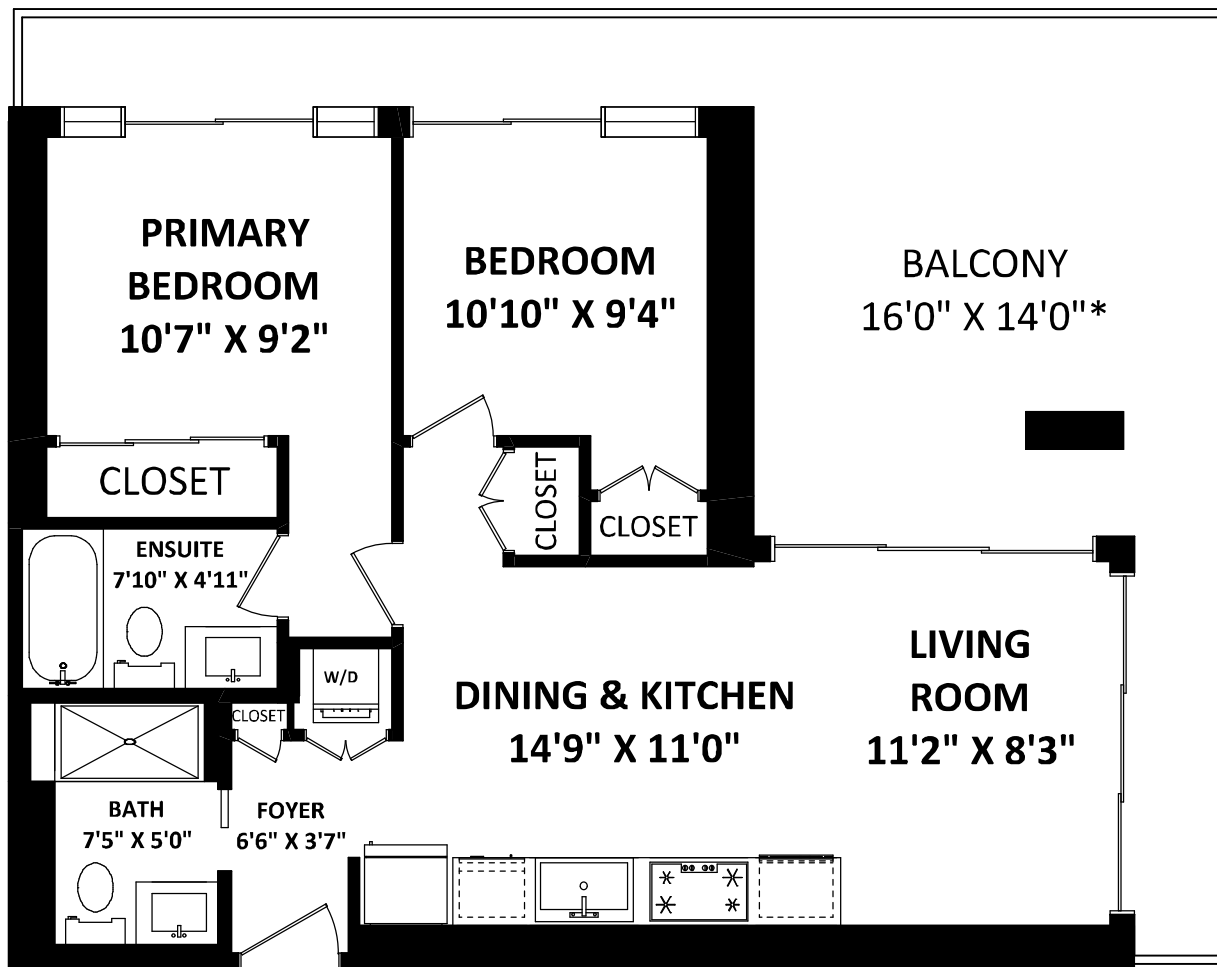
Team 3000 Realty Ltd.  
Cell: 604-306-1968  
Office: 778-297-3000  
tammy@tammysharp.com  
www.tammysharp.com

# #1911 4720 Lougheed Hwy Burnaby, BC

**DEVELOPER PLAN: 732 SQ.FT.**

OTHER AREA(S)

BALCONY: 340 SQ.FT.\*



[NOVEMBER 21, 2022]



TEL: 604-575-1244  
www.seevirtual360.com

DISCLAIMERS:

1. MEASUREMENTS ARE FOR PROMOTIONAL USE ONLY & ARE NOT INTENDED FOR CONSTRUCTION USE. ROOM DIMENSIONS ARE APPROXIMATE.
  2. FINISHED AREAS ARE ENCLOSED AREAS IN A HOUSE THAT ARE SUITABLE FOR YEAR-ROUND USE, EMBODYING WALLS, FLOORS, AND CEILINGS THAT ARE SIMILAR TO THE REST OF THE HOUSE. (ANSI Z765-2013)
  3. THE TOTAL SQUARE FOOTAGE IS TAKEN FROM THE DEVELOPER'S PLAN.
  4. THIS FLOOR PLAN MAY ONLY BE REPRODUCED WITH PERMISSION OF THE REALTOR(S) ON THIS FLOOR PLAN.
- \* ANY MEASUREMENTS WITH AN ASTERISK (\*) ARE APPROXIMATE AND FOR ILLUSTRATION PURPOSES ONLY AND ARE NOT E&O INSURED.