

#29 7001 Eden Drive Chilliwack, BC



CAROLYN CARSON
PERSONAL REAL ESTATE CORPORATION

Call or Text: 778.878.4687 | E: choosecarolyn@gmail.com | W: choosecarolyn.com



TOTAL FLOOR AREA: 3578 SQ.FT.

FINISHED AREA(S): 2881 SQ.FT.

SOLARIUM: 253 SQ.FT.

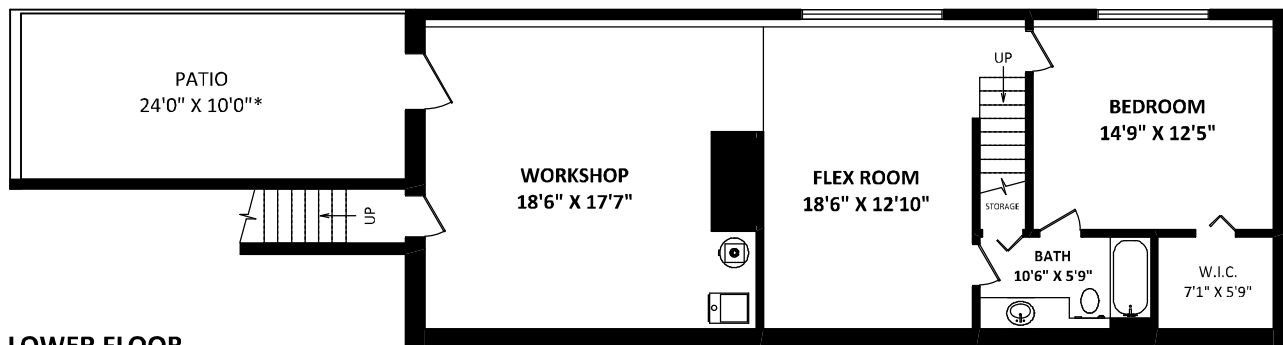
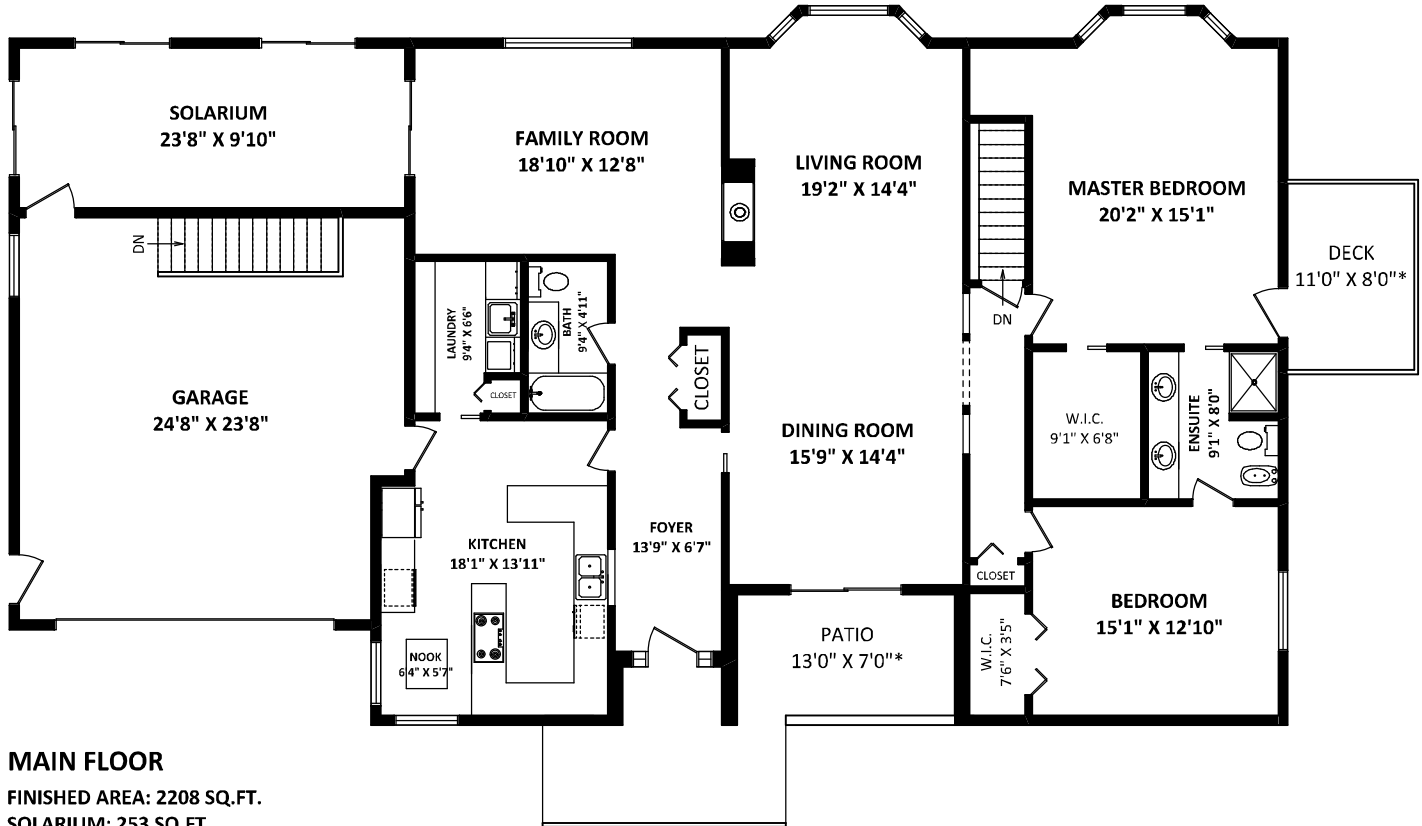
WORKSHOP: 444 SQ.FT.

OTHER AREA(S)

GARAGE: 607 SQ.FT.

DECK: 95 SQ.FT.*

PATIO: 492 SQ.FT.*



SCALE 0 2 5 10FT

[OCTOBER 31, 2022]



TEL: 604-575-1244
www.seevirtual360.com

DISCLAIMERS:

1. MEASUREMENTS ARE FOR PROMOTIONAL USE ONLY & ARE NOT INTENDED FOR CONSTRUCTION USE. ROOM DIMENSIONS ARE APPROXIMATE. MEASUREMENTS & CALCULATIONS FOR FINISHED AREAS ARE E&O INSURED.
 2. FINISHED AREAS ARE ENCLOSED AREAS IN A HOUSE THAT ARE SUITABLE FOR YEAR-ROUND USE, EMBODYING WALLS, FLOORS, AND CEILINGS THAT ARE SIMILAR TO THE REST OF THE HOUSE. (ANSI Z765-2013)
 3. FOR BARE LAND STRATA, SQUARE FOOTAGE OF EACH LEVEL IS CALCULATED TO THE EXTERIOR FINISHED SURFACE OF THE OUTSIDE WALLS.
 4. THIS FLOOR PLAN MAY ONLY BE REPRODUCED WITH PERMISSION OF THE REALTOR(S) ON THIS FLOOR PLAN.
- * ANY MEASUREMENTS WITH AN ASTERISK (*) OR (APPROX) ARE APPROXIMATE AND FOR ILLUSTRATION PURPOSES ONLY AND ARE NOT E&O INSURED.