



**TAMMY SHARP**  
**PERSONAL REAL ESTATE CORPORATION**

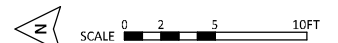
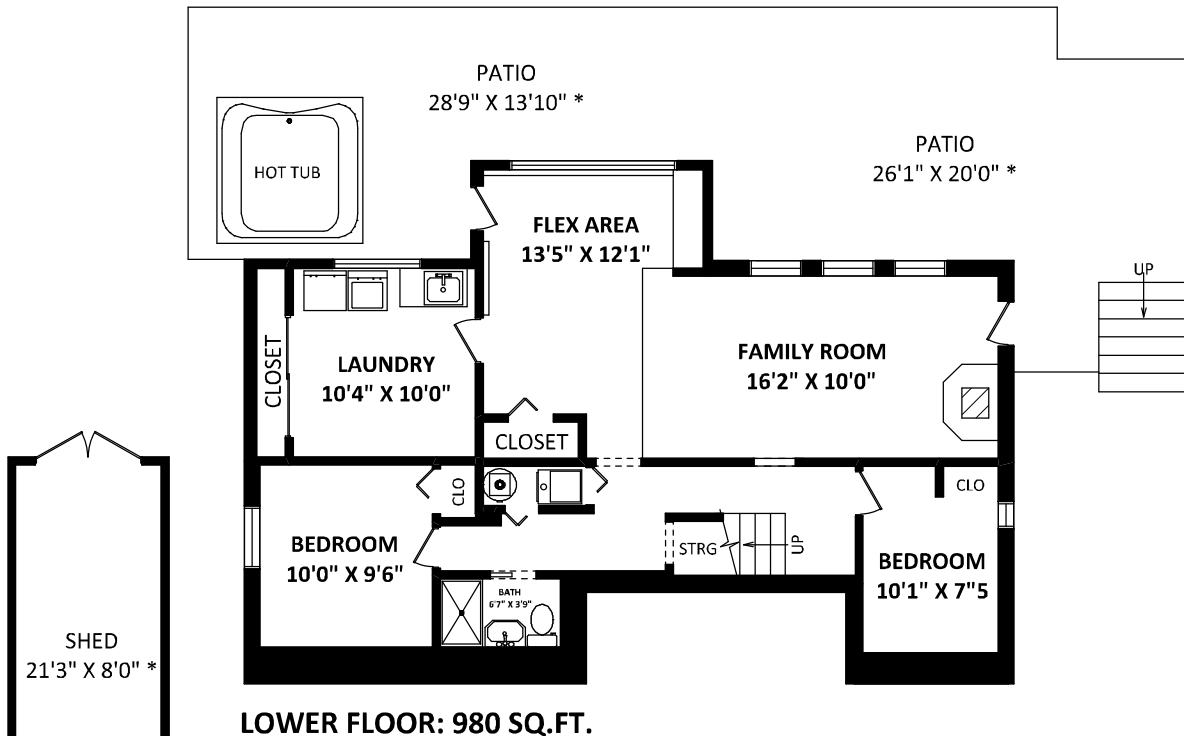
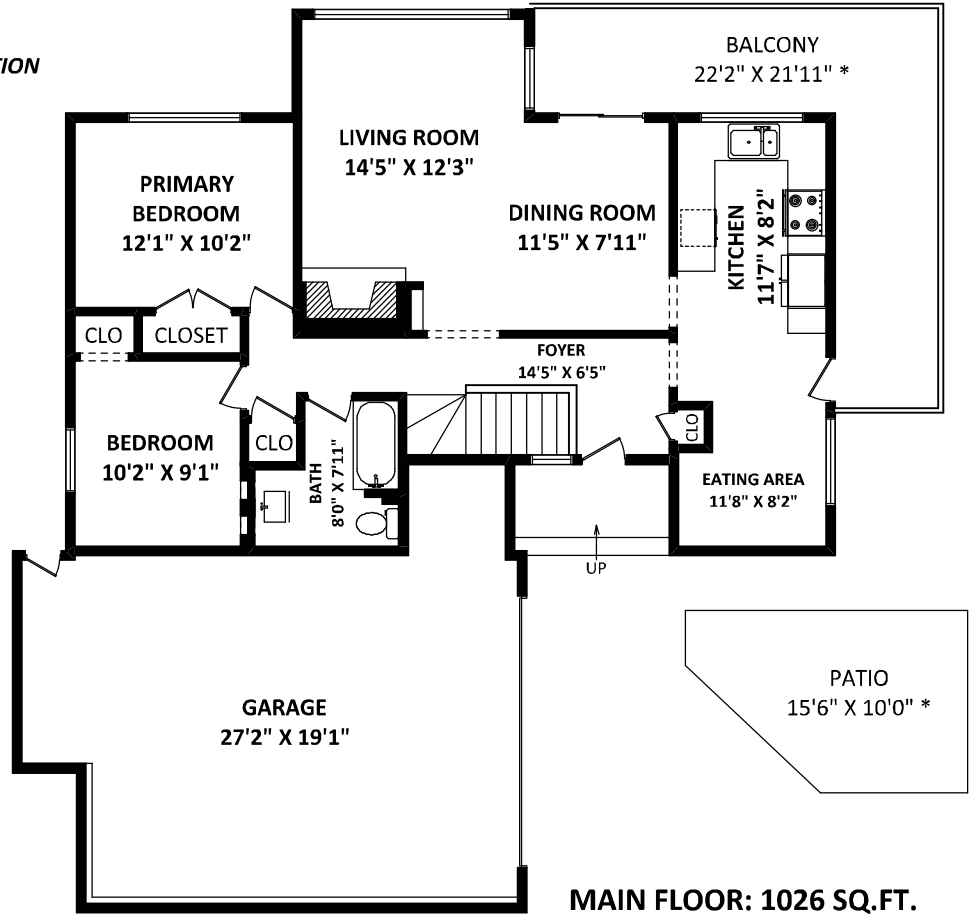
*Team 3000 Realty Ltd.*  
 Cell: 604-306-1968  
 Office: 778-297-3000  
 tammy@tammysharp.com  
 www.tammysharp.com

**1781 View Street**  
**Port Moody, BC**

**TOTAL FINISHED AREA: 2006 SQ.FT.**

*OTHER AREA(S)*

GARAGE:	555 SQ.FT.
PATIO (MAIN FL):	129 SQ.FT.*
PATIO (LOWER FL):	703 SQ.FT.*
BALCONY:	232 SQ.FT.*
SHED:	195 SQ.FT.*



[SEPTEMBER 29, 2022]



TEL: 604-575-1244  
 www.seevirtual360.com

**DISCLAIMERS:**  
 1. MEASUREMENTS ARE FOR PROMOTIONAL USE ONLY & ARE NOT INTENDED FOR CONSTRUCTION USE. ROOM DIMENSIONS ARE APPROXIMATE. MEASUREMENTS & CALCULATIONS FOR FINISHED AREAS ARE E&O INSURED.  
 2. FINISHED AREAS ARE ENCLOSED AREAS IN A HOUSE THAT ARE SUITABLE FOR YEAR-ROUND USE, EMBODYING WALLS, FLOORS, AND CEILINGS THAT ARE SIMILAR TO THE REST OF THE HOUSE. (ANSI Z765-2013)  
 3. FOR DETACHED SINGLE-FAMILY HOUSES, THE FINISHED SQUARE FOOTAGE OF EACH LEVEL IS CALCULATED TO THE EXTERIOR FINISHED SURFACE OF THE OUTSIDE WALLS. (ANSI Z765-2013)  
 4. THIS FLOOR PLAN MAY ONLY BE REPRODUCED WITH PERMISSION OF THE REALTOR(S) ON THIS FLOOR PLAN.  
 \* ANY MEASUREMENTS WITH AN ASTERISK (\*) ARE APPROXIMATE AND FOR ILLUSTRATION PURPOSES ONLY AND ARE NOT E&O INSURED.