

Your Realtor for Life.

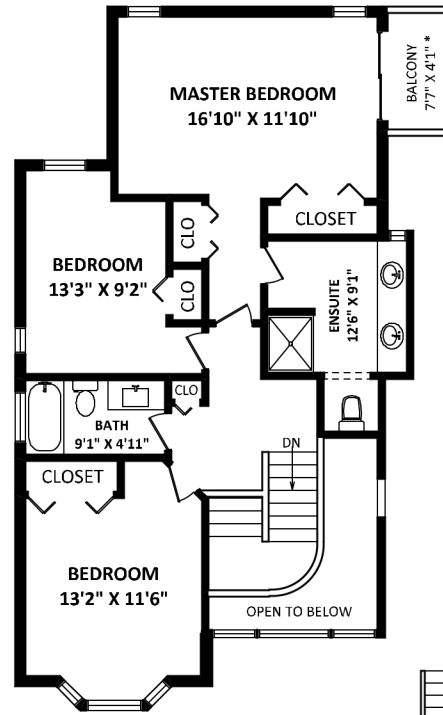


KIM TAYLOR
Real Estate

604-315-2645 | KIMTAYLORHOMES.COM



**510 Bayview Road
Lions Bay, BC**

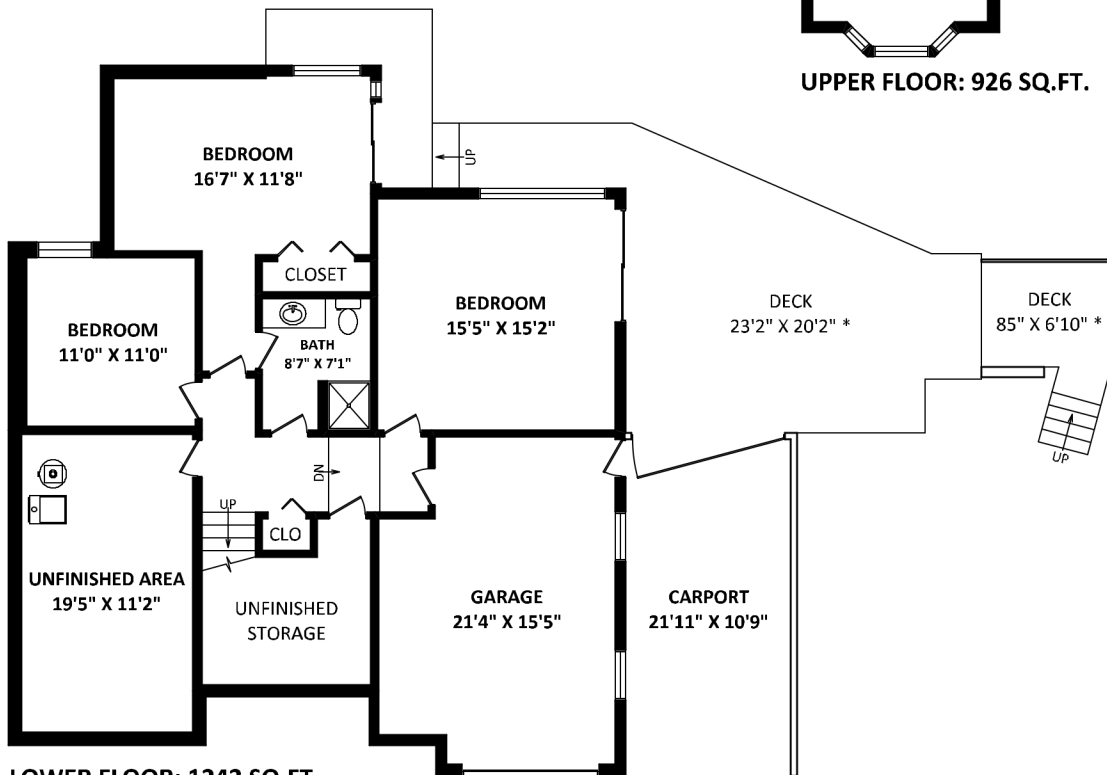


UPPER FLOOR: 926 SQ.FT.

TOTAL FLOOR AREA: 3725 SQ.FT.
FINISHED AREA(S): 3347 SQ.FT.
UNFINISHED AREA(S): 378 SQ.FT.

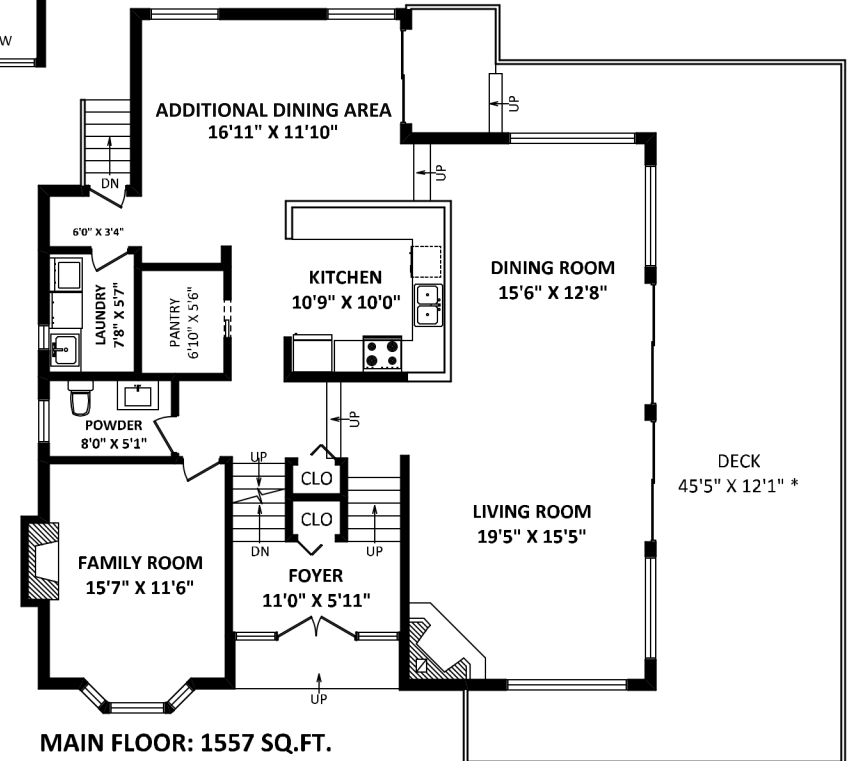
OTHER AREA(S)

GARAGE:	330 SQ.FT.
CARPORT:	250 SQ.FT.
DECK (MAIN FL):	724 SQ.FT.*
DECK (LOWER FL):	530 SQ.FT.*
BALCONY:	38 SQ.FT.*

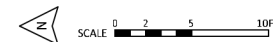


LOWER FLOOR: 1242 SQ.FT.

FINISHED AREA: 864 SQ.FT.
UNFINISHED AREAS: 378 SQ.FT.



MAIN FLOOR: 1557 SQ.FT.



[SEPTEMBER 21, 2022]



TEL: 604-575-1244
www.seevirtual360.com

DISCLAIMER:
1. MEASUREMENTS ARE FOR PROMOTIONAL USE ONLY & ARE NOT INTENDED FOR CONSTRUCTION USE. ROOM DIMENSIONS ARE APPROXIMATE.
2. MEASUREMENTS & CALCULATIONS FOR FINISHED AREAS ARE ALSO INSURED.
3. FINISHED AREAS ARE FINISHED AREAS IN A HOUSE THAT ARE SUITABLE FOR YEAR-ROUND USE, INCLUDING WALLS, FLOORS, AND CEILINGS THAT ARE SIMILAR TO THE REST OF THE HOUSE. (ANSI Z765-2013)
4. FOR DETACHED SINGLE-FAMILY HOUSES, THE FINISHED SQUARE FOOTAGE OF EACH FLOOR IS CALCULATED TO THE EXTERIOR FINISHED SURFACE OF THE OUTSIDE WALLS. (ANSI Z765-2013)
5. THIS FLOOR PLAN MAY ONLY BE REPRODUCED WITH PERMISSION OF THE REALTOR(S) ON THIS FLOOR PLAN.
* ANY MEASUREMENTS WITH AN ASTERISK (*) ARE APPROXIMATE AND FOR ILLUSTRATION PURPOSES ONLY AND ARE NOT FINISHED.