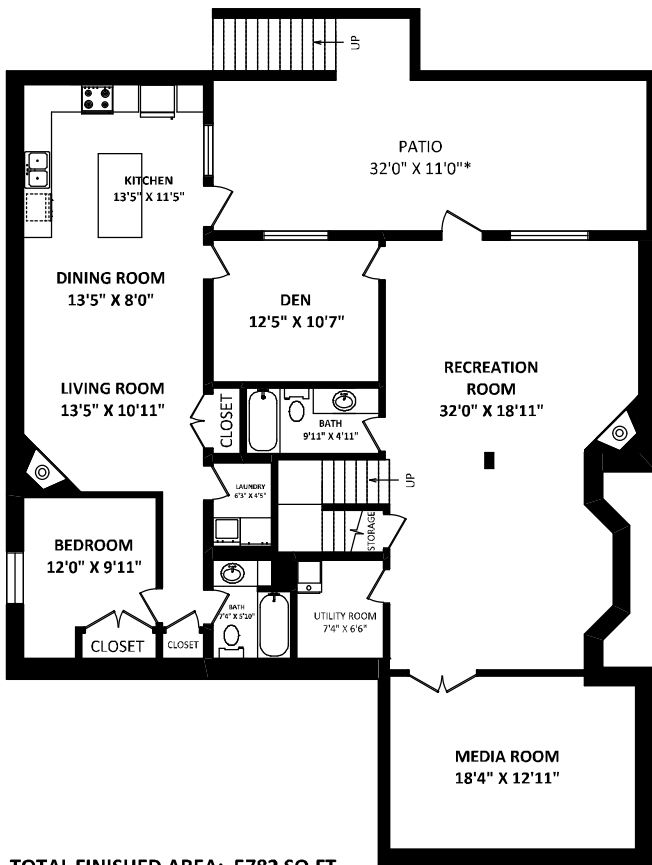
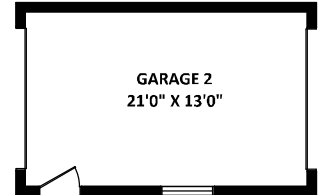
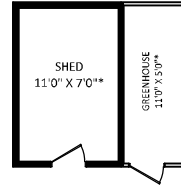


Kendra Andreassen
Personal Real Estate Corporation

Mobile: 604-312-4125
Office: 604-530-4141
kendraandreassen@realtynuance.com
www.kendraandreassen.com

Everything you need to know about real estate in the Fraser Valley!



TOTAL FINISHED AREA: 5782 SQ.FT.

OTHER AREA(S)

GARAGE 1:	504 SQ.FT.
GARAGE 2:	320 SQ.FT.*
DECKS:	760 SQ.FT.*
PATIO:	400 SQ.FT.*
SHED & GREENHOUSE:	160 SQ.FT.*

LOWER FLOOR: 2041 SQ.FT.

MAIN FLOOR: 2039 SQ.FT.