

51-6300 Birch Street Richmond, BC



TONY HEPBURN

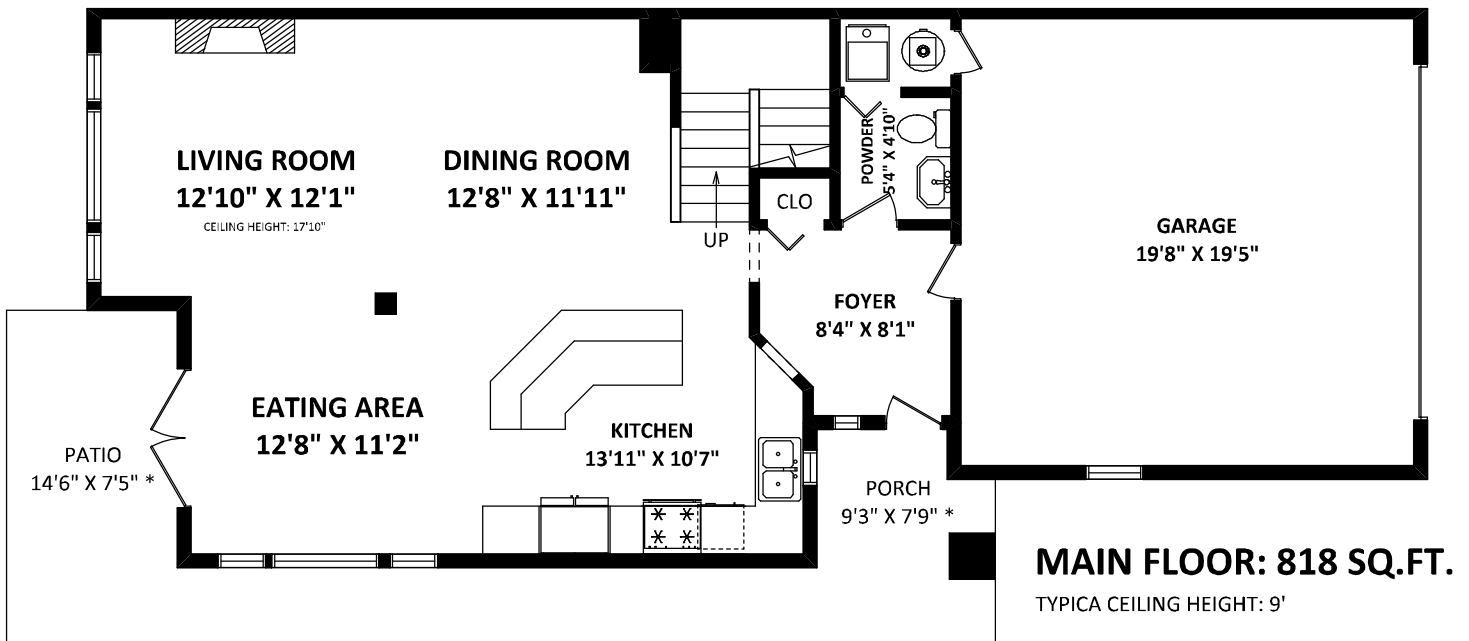
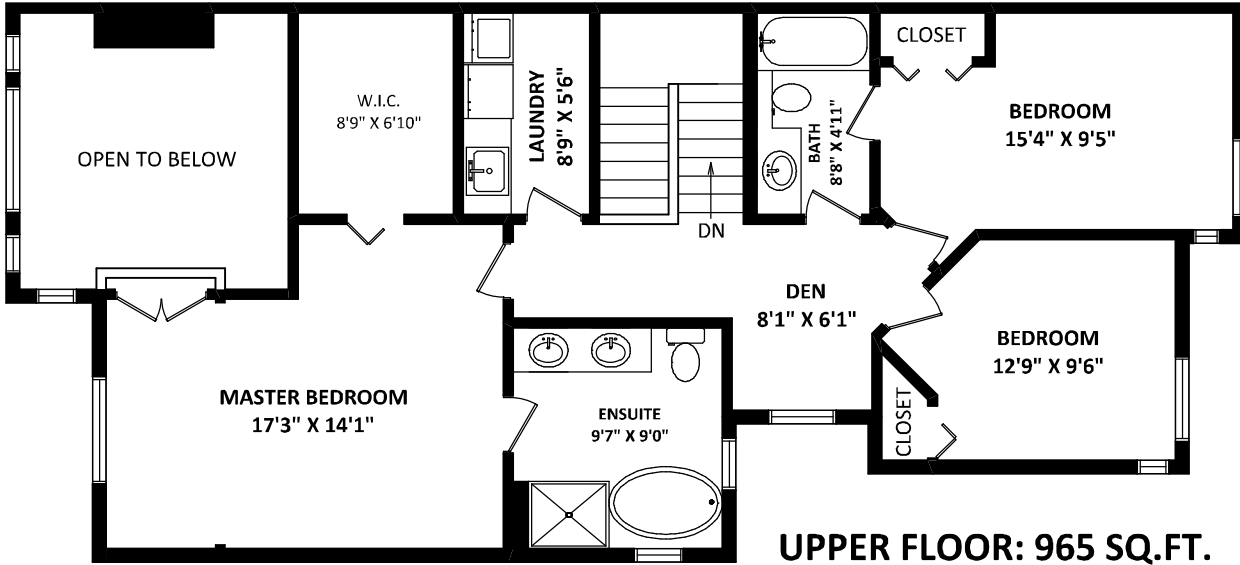
RE/MAX Crest Realty
Cell: 604-506-3883
Office: 604-732-1336

Tony@HepburnProperties.com
www.HepburnProperties.com

TOTAL FINISHED AREA: 1783 SQ.FT.

OTHER AREA(S)

GARAGE:	408 SQ.FT.
PORCH:	68 SQ.FT.*
PATIO:	107 SQ.FT.*



[AUGUST 22, 2022]



TEL: 604-575-1244
www.seevirtual360.com

DISCLAIMERS:
1. MEASUREMENTS ARE FOR PROMOTIONAL USE ONLY & ARE NOT INTENDED FOR CONSTRUCTION USE. ROOM DIMENSIONS ARE APPROXIMATE.
2. MEASUREMENTS & CALCULATIONS FOR FINISHED AREAS ARE E&O INSURED.
3. FINISHED AREAS ARE ENCLOSED AREAS IN A HOUSE THAT ARE SUITABLE FOR YEAR-ROUND USE, EMBODYING WALLS, FLOORS, AND CEILINGS THAT ARE SIMILAR TO THE REST OF THE HOUSE. (ANSI Z765-2013)
4. FOR DETACHED SINGLE-FAMILY HOUSES, THE FINISHED SQUARE FOOTAGE OF EACH LEVEL IS CALCULATED TO THE EXTERIOR FINISHED SURFACE OF THE OUTSIDE WALLS. (ANSI Z765-2013)
5. THIS FLOOR PLAN MAY ONLY BE REPRODUCED WITH PERMISSION OF THE REALTOR(S) ON THIS FLOOR PLAN.
* ANY MEASUREMENTS WITH AN ASTERISK (*) ARE APPROXIMATE AND FOR ILLUSTRATION PURPOSES ONLY AND ARE NOT E&O INSURED.

