

TOTAL FINISHED AREA: 2490 SQ.FT.

OTHER AREA(S)

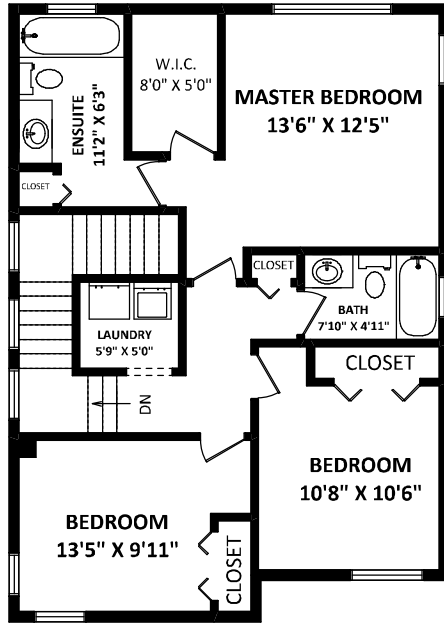
GARAGE:	603 SQ.FT.
DECK:	100 SQ.FT.*
PATIO:	100 SQ.FT.*



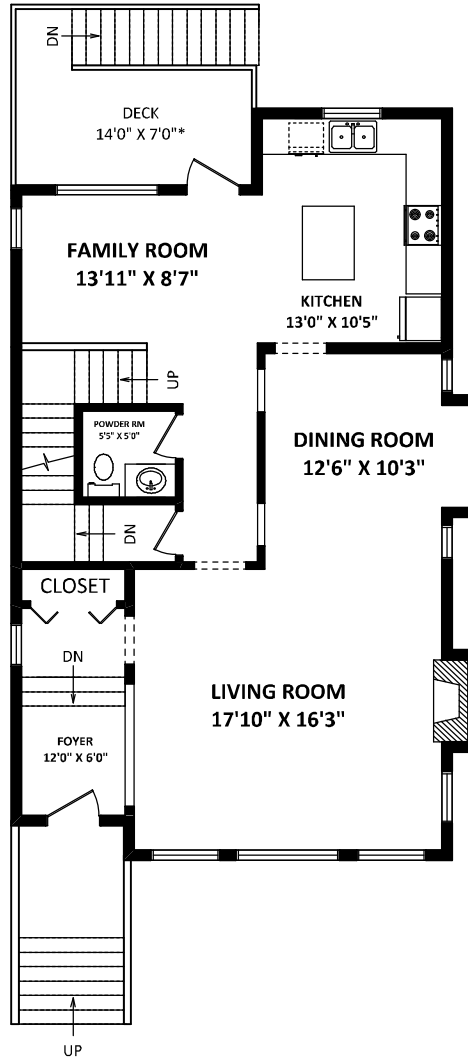
KELLY LERIGNY

RE/MAX Nyda Realty
 Cell: 604-703-5564
 Office: 604-858-7179
 kelly@soldonchilliwack.com
 soldonchilliwack.com

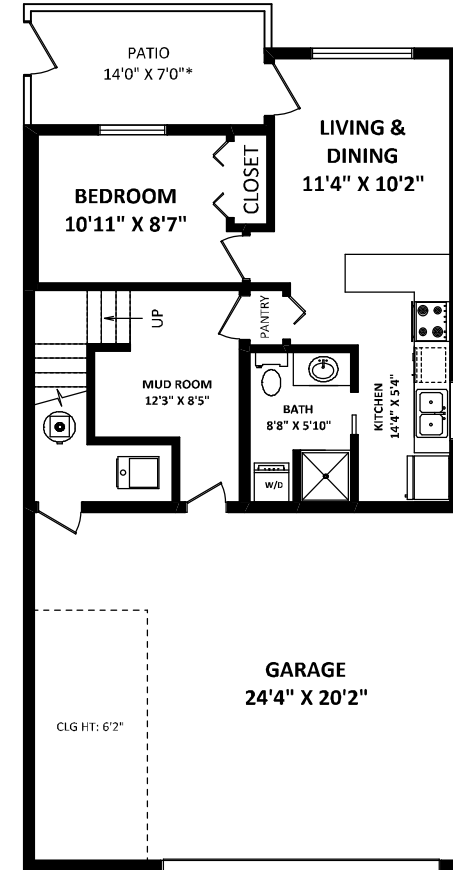
**5153 Teskey Road
Chilliwack, BC**



UPPER FLOOR: 885 SQ.FT.



MAIN FLOOR: 1056 SQ.FT.



LOWER FLOOR: 549 SQ.FT.

[JULY 29, 2022]



TEL: 604-575-1244
 www.seevirtual360.com

DISCLAIMERS:

1. MEASUREMENTS ARE FOR PROMOTIONAL USE ONLY & ARE NOT INTENDED FOR CONSTRUCTION USE. ROOM DIMENSIONS ARE APPROXIMATE. MEASUREMENTS & CALCULATIONS FOR FINISHED AREAS ARE E&O INSURED.
 2. FINISHED AREAS ARE ENCLOSED AREAS IN A HOUSE THAT ARE SUITABLE FOR YEAR-ROUND USE, EMBODYING WALLS, FLOORS, AND CEILINGS THAT ARE SIMILAR TO THE REST OF THE HOUSE. (ANSI Z765-2013)
 3. FOR DETACHED SINGLE-FAMILY HOUSES, THE FINISHED SQUARE FOOTAGE OF EACH LEVEL IS CALCULATED TO THE EXTERIOR FINISHED SURFACE OF THE OUTSIDE WALLS. (ANSI Z765-2013)
 4. THIS FLOOR PLAN MAY ONLY BE REPRODUCED WITH PERMISSION OF THE REALTOR(S) ON THIS FLOOR PLAN.
- * ANY MEASUREMENTS WITH AN ASTERISK (*) OR (APPROX) ARE APPROXIMATE AND FOR ILLUSTRATION PURPOSES ONLY AND ARE NOT E&O INSURED.

