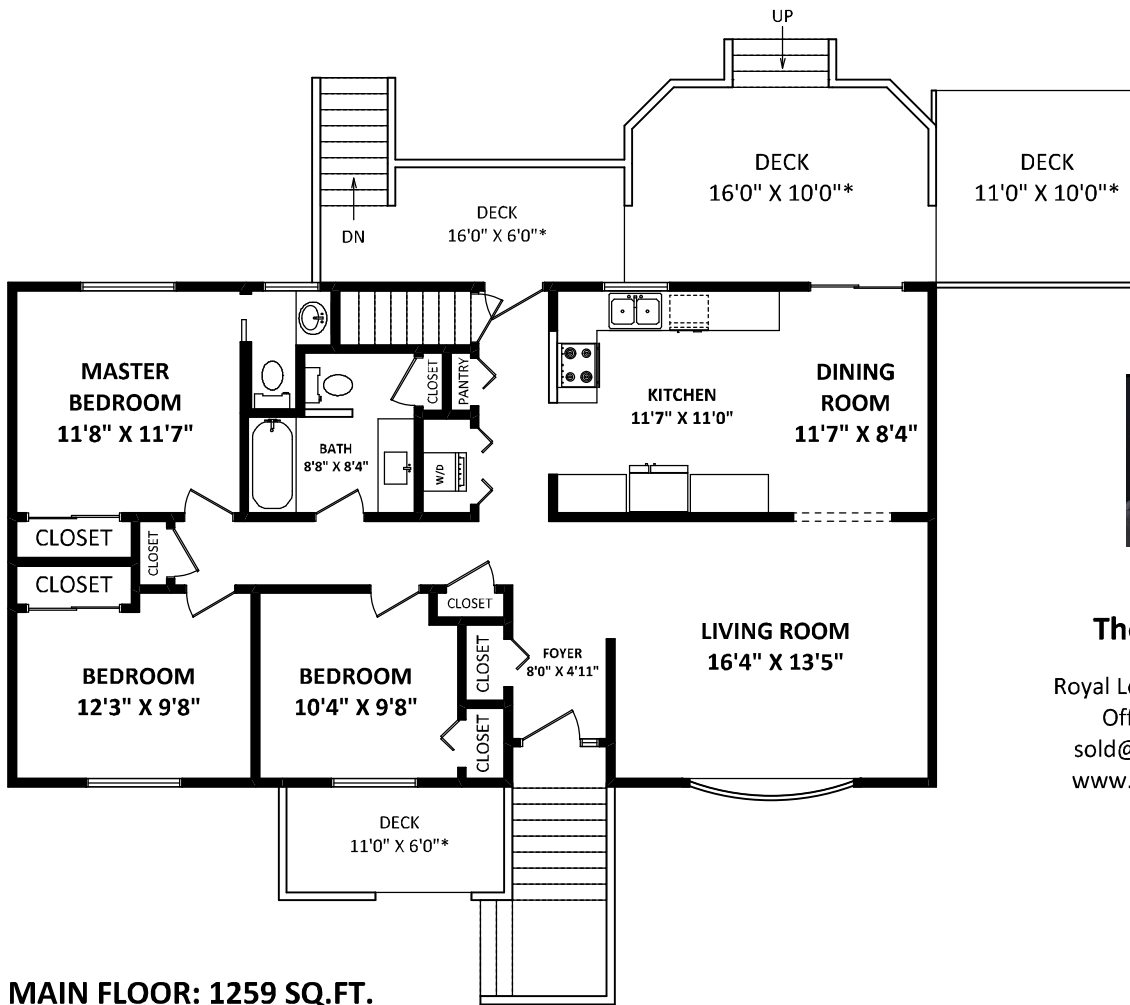


**11725 Yeo Street
Mission, BC**



The Pearce Team

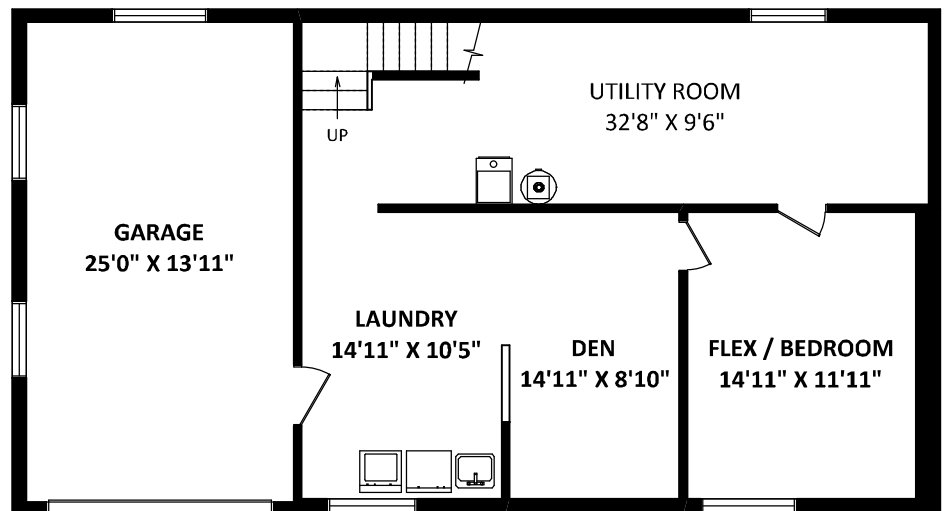
Royal LePage Brookside Realty
Office: 604-466-4549
sold@thepearceteam.com
www.ThePearceTeam.com

MAIN FLOOR: 1259 SQ.FT.

TOTAL FLOOR AREA: 2143 SQ.FT.
FINISHED AREA(S): 1801 SQ.FT.
UTILITY ROOM: 342 SQ.FT.

OTHER AREA(S)

GARAGE: 385 SQ.FT.
DECKS: 440 SQ.FT.*



LOWER FLOOR

FINISHED AREA: 542 SQ.FT.
UTILITY ROOM: 342 SQ.FT.

[JULY 12, 2022]



DISCLAIMERS:

1. MEASUREMENTS ARE FOR PROMOTIONAL USE ONLY & ARE NOT INTENDED FOR CONSTRUCTION USE. ROOM DIMENSIONS ARE APPROXIMATE. MEASUREMENTS & CALCULATIONS FOR FINISHED AREAS ARE E&O INSURED.
 2. FINISHED AREAS ARE ENCLOSED AREAS IN A HOUSE THAT ARE SUITABLE FOR YEAR-ROUND USE, EMBODYING WALLS, FLOORS, AND CEILINGS THAT ARE SIMILAR TO THE REST OF THE HOUSE. (ANSI Z765-2013)
 3. FOR DETACHED SINGLE-FAMILY HOUSES, THE FINISHED SQUARE FOOTAGE OF EACH LEVEL IS CALCULATED TO THE EXTERIOR FINISHED SURFACE OF THE OUTSIDE WALLS. (ANSI Z765-2013)
 4. THIS FLOOR PLAN MAY ONLY BE REPRODUCED WITH PERMISSION OF THE REALTOR(S) ON THIS FLOOR PLAN.
- * ANY MEASUREMENTS WITH AN ASTERISK (*) OR [APPROX] ARE APPROXIMATE AND FOR ILLUSTRATION PURPOSES ONLY AND ARE NOT E&O INSURED.