



**WyantCraig Real Estate Group**

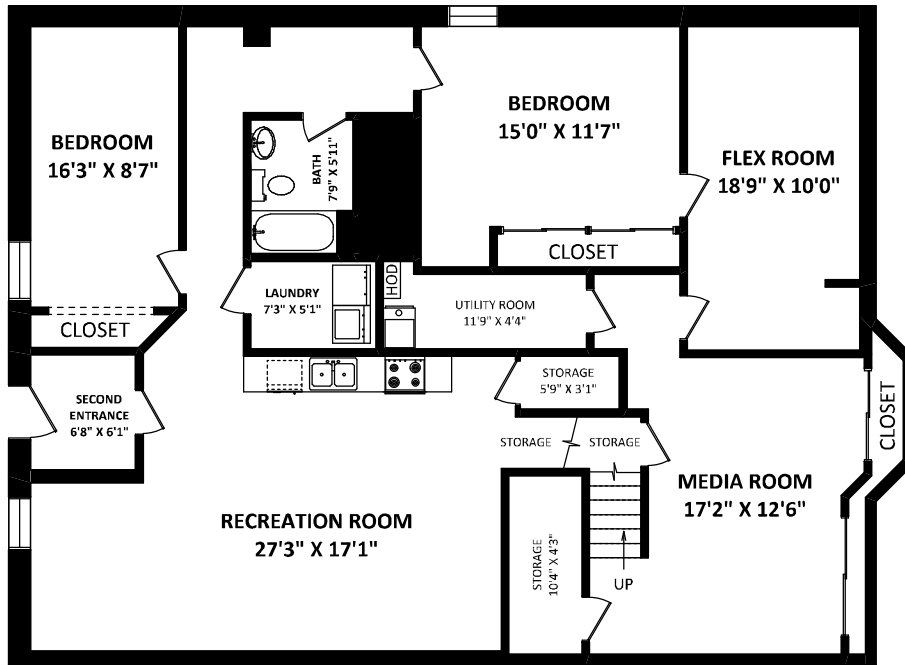
eXp Realty  
 Phone: 604-460-2831  
 sandra@wyantcraig.com  
 josh@wyantcraig.com  
 www.wyantcraig.com



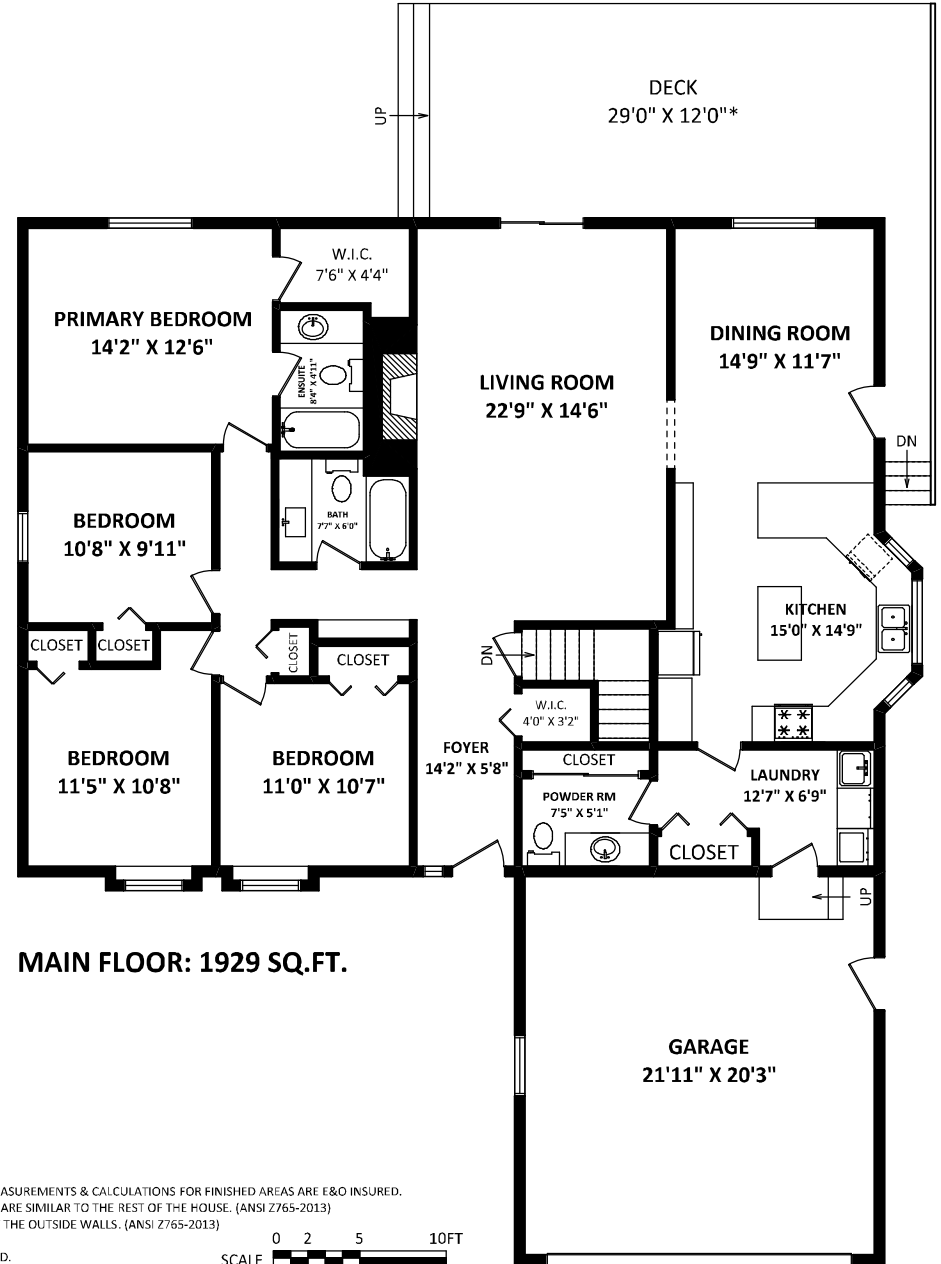
**8843 Wooler Terrace  
 Mission, BC**

**TOTAL FINISHED AREA: 3858 SQ.FT.**

*OTHER AREA(S)*  
 GARAGE: 482 SQ.FT.  
 DECK: 348 SQ.FT.\*



**LOWER FLOOR: 1929 SQ.FT.**



**MAIN FLOOR: 1929 SQ.FT.**

[JULY 4, 2022]



TEL: 604-575-1244  
 www.seevirtual360.com

**DISCLAIMERS:**

1. MEASUREMENTS ARE FOR PROMOTIONAL USE ONLY & ARE NOT INTENDED FOR CONSTRUCTION USE. ROOM DIMENSIONS ARE APPROXIMATE. MEASUREMENTS & CALCULATIONS FOR FINISHED AREAS ARE E&O INSURED.
2. FINISHED AREAS ARE ENCLOSED AREAS IN A HOUSE THAT ARE SUITABLE FOR YEAR-ROUND USE, EMBODYING WALLS, FLOORS, AND CEILINGS THAT ARE SIMILAR TO THE REST OF THE HOUSE. (ANSI Z765-2013)
3. FOR DETACHED SINGLE-FAMILY HOUSES, THE FINISHED SQUARE FOOTAGE OF EACH LEVEL IS CALCULATED TO THE EXTERIOR FINISHED SURFACE OF THE OUTSIDE WALLS. (ANSI Z765-2013)
4. THIS FLOOR PLAN MAY ONLY BE REPRODUCED WITH PERMISSION OF THE REALTOR(S) ON THIS FLOOR PLAN.

\* ANY MEASUREMENTS WITH AN ASTERISK (\*) OR (APPROX) ARE APPROXIMATE AND FOR ILLUSTRATION PURPOSES ONLY AND ARE NOT E&O INSURED.

