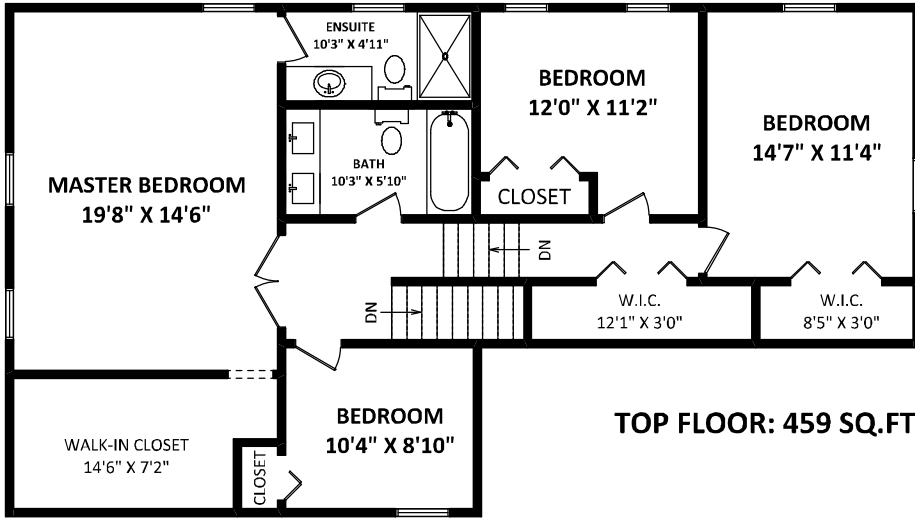
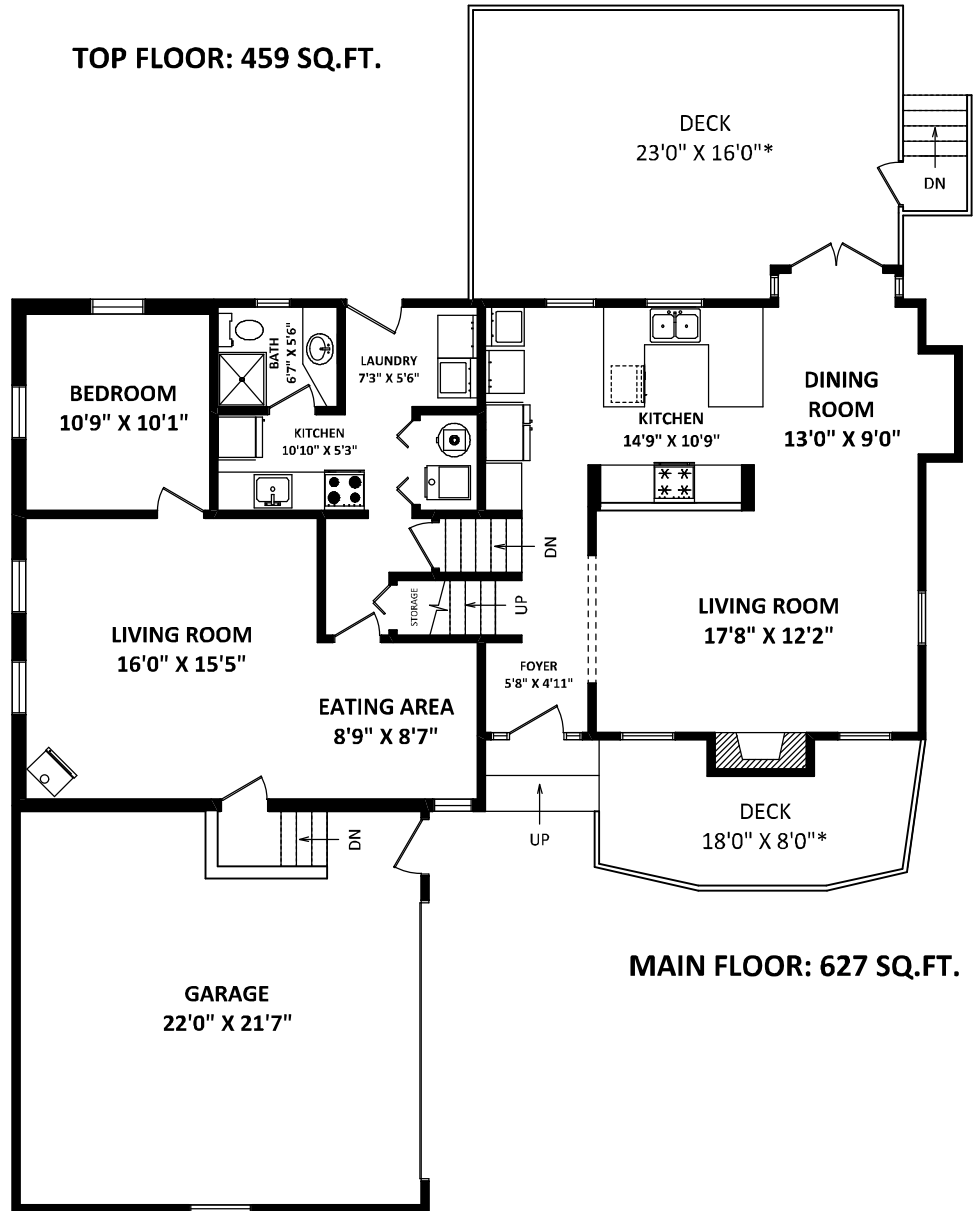


19765 48 Avenue  
Langley, BC



**MIDDLE FLOOR: 727 SQ.FT.**



**LEO RONSE**

Royal LePage - Wolstencroft Realty  
Office: 604-790-0231  
leo@cantplaygolf.ca  
cantplaygolf.ca

**TOTAL FINISHED AREA: 2524 SQ.FT.**

**OTHER AREA(S)**

GARAGE: 502 SQ.FT.  
DECKS: 510 SQ.FT.\*

**LOWER FLOOR: 711 SQ.FT.**

[JUNE 13, 2022]



**DISCLAIMERS:**  
1. MEASUREMENTS ARE FOR PROMOTIONAL USE ONLY & ARE NOT INTENDED FOR CONSTRUCTION USE. ROOM DIMENSIONS ARE APPROXIMATE. MEASUREMENTS & CALCULATIONS FOR FINISHED AREAS ARE E&O INSURED.  
2. FINISHED AREAS ARE ENCLOSED AREAS IN A HOUSE THAT ARE SUITABLE FOR YEAR-ROUND USE, EMBODYING WALLS, FLOORS, AND CEILING THAT ARE SIMILAR TO THE REST OF THE HOUSE. (ANSI Z765-2013)  
3. FOR DETACHED SINGLE-FAMILY HOUSES, THE FINISHED SQUARE FOOTAGE OF EACH LEVEL IS CALCULATED TO THE EXTERIOR FINISHED SURFACE OF THE OUTSIDE WALLS. (ANSI Z765-2013)  
4. THIS FLOOR PLAN MAY ONLY BE REPRODUCED WITH PERMISSION OF THE REALTORS ON THIS FLOOR PLAN.  
\* ANY MEASUREMENTS WITH AN ASTERISK (\*) OR (APPROX) ARE APPROXIMATE AND FOR ILLUSTRATION PURPOSES ONLY AND ARE NOT E&O INSURED.

