

10125 Kenswood Drive  
Chilliwack, BC

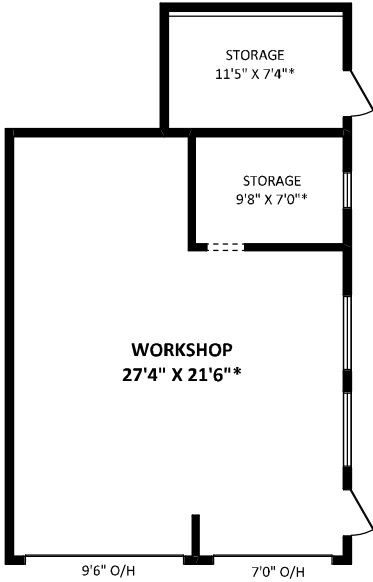


SOLD ON CHILLIWACK

Kelly Lerigny REALTOR®

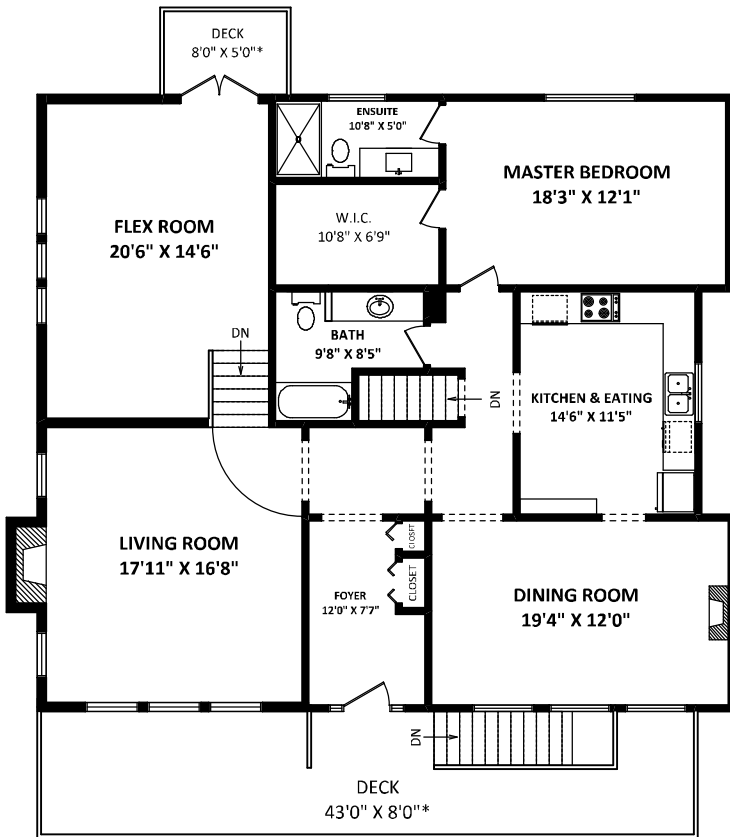
**KELLY LERIGNY**

RE/MAX Nyda Realty  
Cell: 604-703-5564  
Office: 604-858-7179  
kelly@soldonchilliwack.com  
soldonchilliwack.com



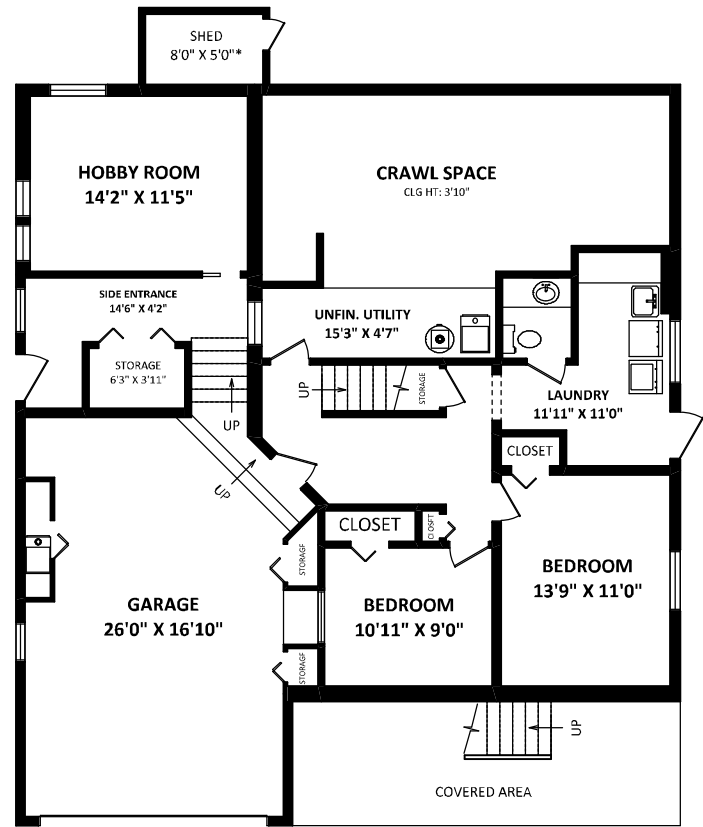
**TOTAL FLOOR AREA: 2824 SQ.FT.**  
**FINISHED AREA(S): 2415 SQ.FT.**  
**HOBBY RM & SIDE ENTRANCE: 335 SQ.FT.**  
**UNFIN. UTILITY: 74 SQ.FT.**

**OTHER AREA(S)**  
GARAGE: 497 SQ.FT.  
WORKSHOP & STORAGE: 638 SQ.FT.\*  
DECKS: 403 SQ.FT.\*  
STORAGE: 101 SQ.FT.\*  
SHED: 43 SQ.FT.\*



**UPPER FLOOR: 336 SQ.FT.**  
**MIDDLE FLOOR: 328 SQ.FT.**

**MAIN FLOOR: 1127 SQ.FT.**



**LOWER FLOOR**

**MAIN HOUSE: 624 SQ.FT.**  
**HOBBY RM & SIDE ENTRANCE: 335 SQ.FT.**  
**UNFIN. UTILITY: 74 SQ.FT.**

SQFT EXCLUDES CRAWL SPACE

