

**22356 & 22358 Lougheed Hwy  
Maple Ridge, BC**

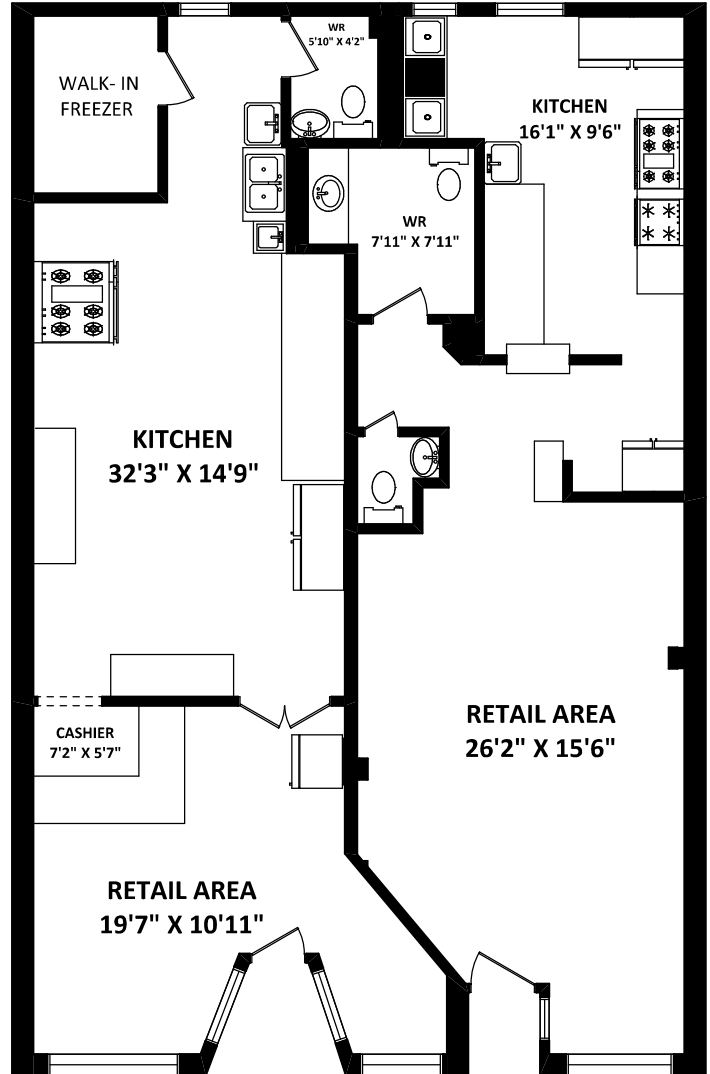
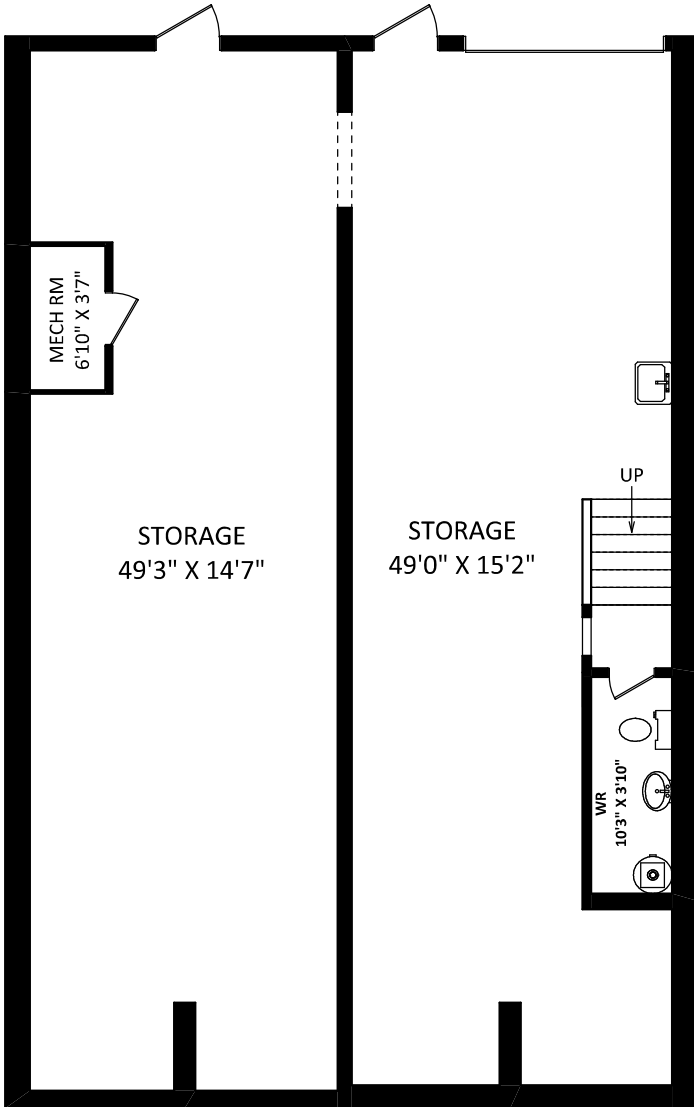


**STEVE & GLORIA HAMILTON**

*Royal LePage - Brookside Realty*

Phone: 604-467-8881  
www.stevehamilton.ca  
www.gloriahamilton.ca

**TOTAL FLOOR AREA:  
3182 SQ.FT.**



[FEBRUARY 8, 2022]



TEL: 604-575-1244  
www.seevirtual360.com

**DISCLAIMERS:**

1. MEASUREMENTS ARE FOR PROMOTIONAL USE ONLY & ARE NOT INTENDED FOR CONSTRUCTION USE. ROOM DIMENSIONS ARE APPROXIMATE. MEASUREMENTS & CALCULATIONS ARE E&O INSURED.
  2. GROSS LEASABLE AREA IS CALCULATED ACCORDING TO RETAIL BUILDINGS STANDARD (ANSI/BOMA Z65.5-2010).
  3. THIS FLOOR PLAN MAY ONLY BE REPRODUCED WITH PERMISSION OF THE REALTOR(S)/PURCHASER(S) ON THIS FLOOR PLAN.
  4. REFER TO PAGE 2 FOR DEFINITIONS ON SQFT CALCULATIONS.
- \* ANY MEASUREMENT WITH AN ASTERISK (\*) OR (APPROX) ARE APPROXIMATE AND FOR ILLUSTRATION PURPOSES ONLY AND ARE NOT E&O INSURED.

