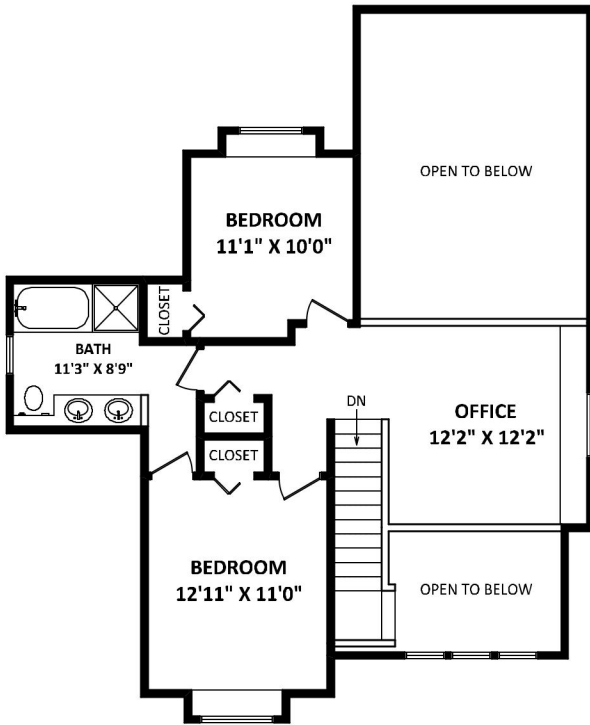


15445 36 Avenue Surrey, BC



**MIKE GRAHAME & TYSON ANGUS**  
 Personal Real Estate Corporation    Personal Real Estate Corporation

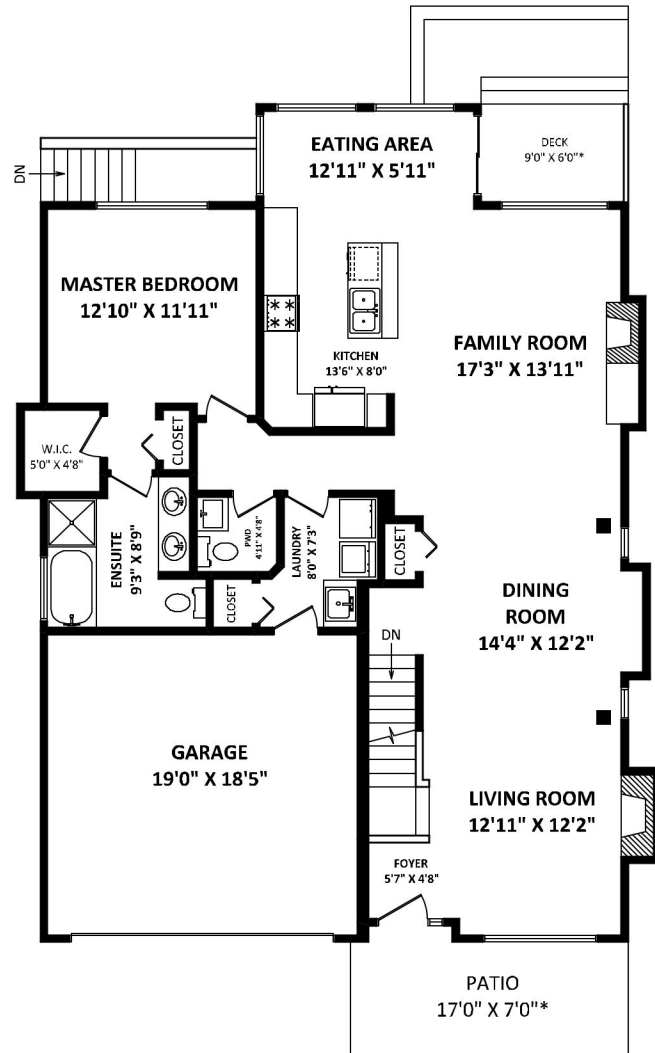
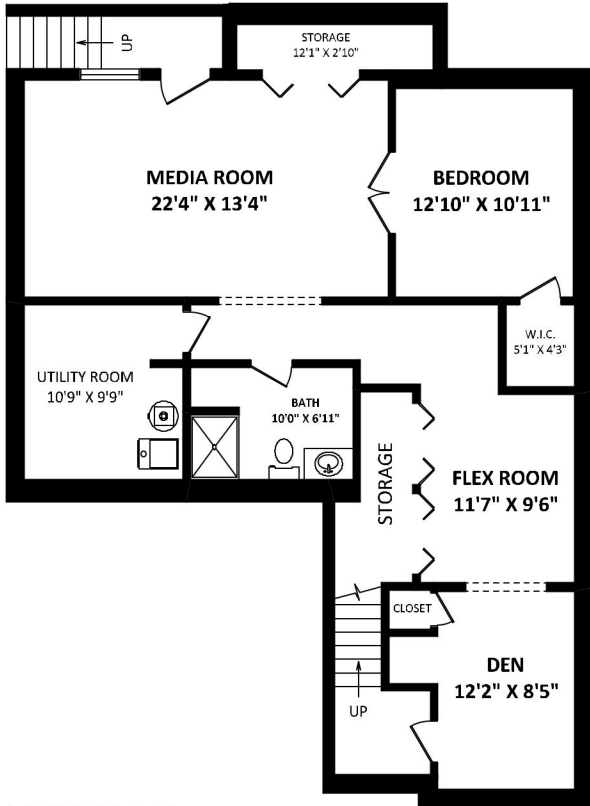
Homelife Benchmark Realty  
 Phone: 604.531.1111  
 sold@mikegrahame.com  
 www.mikegrahame.com



**TOTAL FLOOR AREA: 3390 SQ.FT.**  
 FINISHED AREA(S): 3259 SQ.FT.  
 UNFIN UTILITY: 131 SQ.FT.

*OTHER AREA(S)*

GARAGE: 366 SQ.FT.  
 DECK: 54 SQ.FT.\*  
 PATIO: 125 SQ.FT.\*



[MARCH 22, 2022]



TEL: 604-575-1244  
 www.seevirtual360.com

DISCLAIMERS:  
 1. MEASUREMENTS ARE FOR PROMOTIONAL USE ONLY & ARE NOT INTENDED FOR CONSTRUCTION USE.  
 ROOM DIMENSIONS ARE APPROXIMATE. MEASUREMENTS & CALCULATIONS FOR FINISHED AREAS ARE E&O INSURED.  
 2. FINISHED AREAS ARE ENCLOSED AREAS IN A HOUSE THAT ARE SUITABLE FOR YEAR-ROUND USE, EMBODYING WALLS,  
 FLOORS, AND CEILINGS THAT ARE SIMILAR TO THE REST OF THE HOUSE. (ANSI Z765-2013)  
 3. FOR DETACHED SINGLE-FAMILY HOUSES, THE FINISHED SQUARE FOOTAGE OF EACH LEVEL IS CALCULATED TO  
 THE EXTERIOR FINISHED SURFACE OF THE OUTSIDE WALLS. (ANSI Z765-2013)  
 4. THIS FLOOR PLAN MAY ONLY BE REPRODUCED WITH PERMISSION OF THE REALTOR(S) ON THIS FLOOR PLAN.  
 \* ANY MEASUREMENTS WITH AN ASTERISK (\*) OR (APPROX) ARE APPROXIMATE AND FOR ILLUSTRATION PURPOSES ONLY  
 AND ARE NOT E&O INSURED.

