

**2201-1616 Bayshore Drive  
Vancouver, BC**



**TONY HEPBURN**

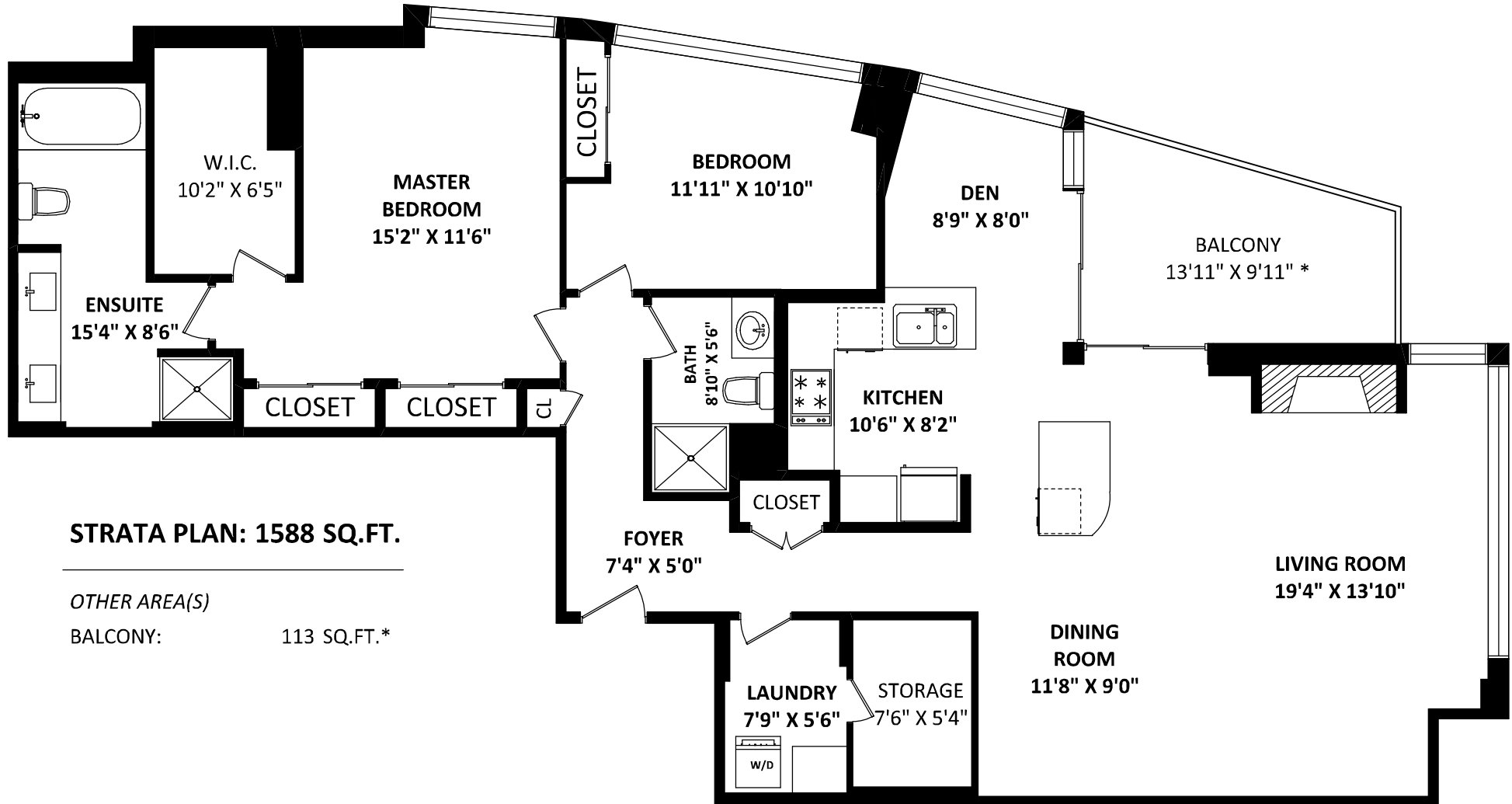
RE/MAX Crest Realty

Cell: 604-506-3883

Office: 604-732-1336

Tony@HepburnProperties.com

www.HepburnProperties.com



**STRATA PLAN: 1588 SQ.FT.**

*OTHER AREA(S)*

BALCONY: 113 SQ.FT.\*

[MARCH 4, 2022]



TEL: 604-575-1244  
www.seevirtual360.com

**DISCLAIMERS:**

1. MEASUREMENTS ARE FOR PROMOTIONAL USE ONLY & ARE NOT INTENDED FOR CONSTRUCTION USE. ROOM DIMENSIONS ARE APPROXIMATE.
  2. FINISHED AREAS ARE ENCLOSED AREAS IN A HOUSE THAT ARE SUITABLE FOR YEAR-ROUND USE, EMBODYING WALLS, FLOORS, AND CEILINGS THAT ARE SIMILAR TO THE REST OF THE HOUSE. (ANSI Z765-2013)
  3. THE TOTAL SQUARE FOOTAGE AND THE SQUARE FOOTAGE OF EACH LEVEL ARE TAKEN FROM THE STRATA PLAN.
  4. THIS FLOOR PLAN MAY ONLY BE REPRODUCED WITH PERMISSION OF THE REALTOR(S) ON THIS FLOOR PLAN.
- \* ANY MEASUREMENTS WITH AN ASTERISK (\*) ARE APPROXIMATE AND FOR ILLUSTRATION PURPOSES ONLY AND ARE NOT E&O INSURED.

