



**12175 193A Street  
Pitt Meadows, BC**

**TOTAL FINISHED AREA: 2088 SQ.FT.**

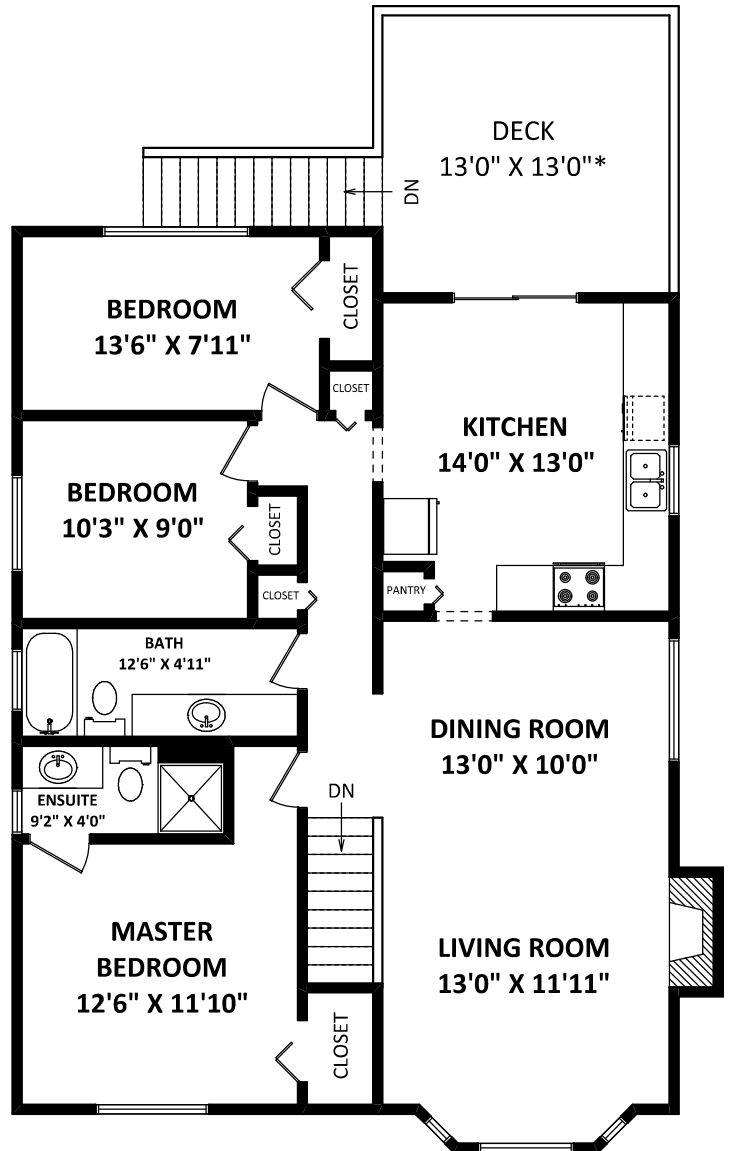
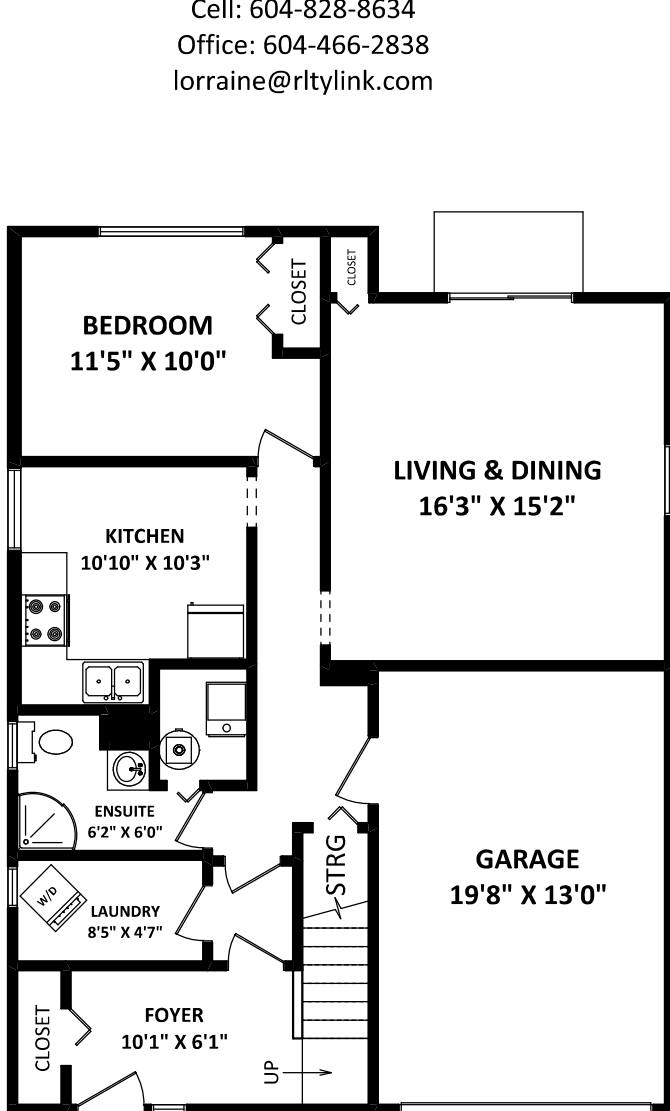
**GARY FRAIPONT & LORRAINE MANYK**

*RE/MAX LifeStyles Realty  
Maple Ridge*

Cell: 604-828-8634  
Office: 604-466-2838  
lorraine@rltylink.com

*OTHER AREA(S)*

GARAGE: 270 SQ.FT.  
DECK: 170 SQ.FT.\*



**LOWER FLOOR: 902 SQ.FT.**

**MAIN FLOOR: 1186 SQ.FT.**

[FEBRUARY 24, 2022]



TEL: 604-575-1244  
www.seevirtual360.com

DISCLAIMERS:  
1. MEASUREMENTS ARE FOR PROMOTIONAL USE ONLY & ARE NOT INTENDED FOR CONSTRUCTION USE.  
ROOM DIMENSIONS ARE APPROXIMATE. MEASUREMENTS & CALCULATIONS FOR FINISHED AREAS ARE E&O INSURED.  
2. FINISHED AREAS ARE ENCLOSED AREAS IN A HOUSE THAT ARE SUITABLE FOR YEAR-ROUND USE, EMBODYING WALLS,  
FLOORS, AND CEILINGS THAT ARE SIMILAR TO THE REST OF THE HOUSE. (ANSI Z765-2013)  
3. FOR DETACHED SINGLE-FAMILY HOUSES, THE FINISHED SQUARE FOOTAGE OF EACH LEVEL IS CALCULATED TO  
THE EXTERIOR FINISHED SURFACE OF THE OUTSIDE WALLS. (ANSI Z765-2013)  
4. THIS FLOOR PLAN MAY ONLY BE REPRODUCED WITH PERMISSION OF THE REALTOR(S) ON THIS FLOOR PLAN.  
\* ANY MEASUREMENTS WITH AN ASTERISK (\*) OR (APPROX) ARE APPROXIMATE AND FOR ILLUSTRATION PURPOSES ONLY  
AND ARE NOT E&O INSURED.

