



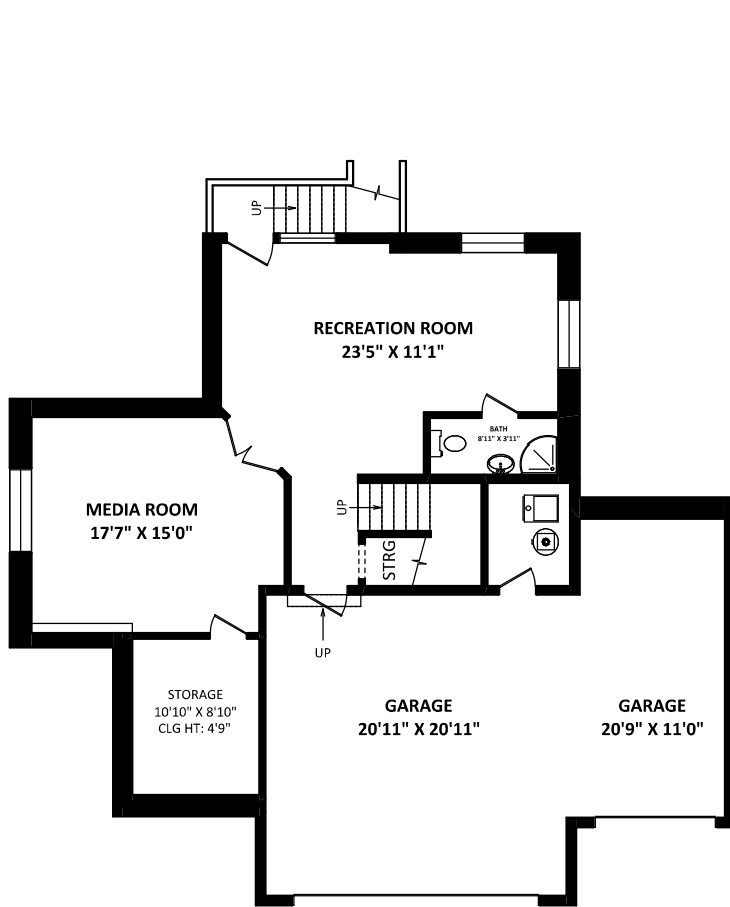
WyantCraig Real Estate Group

eXp Realty
 Phone: 604-460-2831
 sandra@wyantcraig.com
 josh@wyantcraig.com
 www.wyantcraig.com

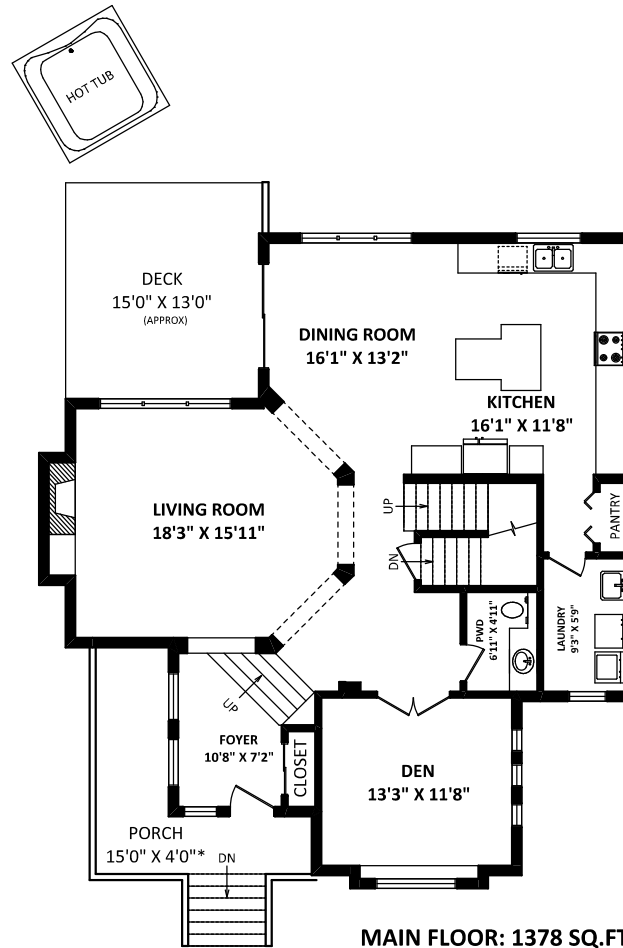
**10645 Kimola Way
 Maple Ridge, BC**

TOTAL FLOOR AREA: 3776 SQ.FT.
FINISHED AREA(S): 3646 SQ.FT.
STORAGE: 130 SQ.FT.**

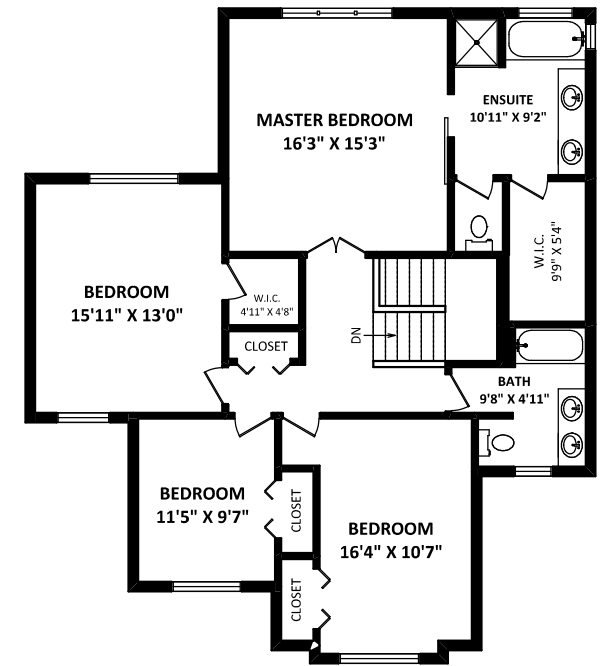
OTHER AREA(S)
GARAGE: 720 SQ.FT.
DECK: 200 SQ.FT.*
PORCH: 135 SQ.FT.*
****INCLUDES THE LOW CEILING AREA(S).**



LOWER FLOOR: 898 SQ.FT.



MAIN FLOOR: 1378 SQ.FT.



UPPER FLOOR: 1370 SQ.FT.

[FEBRUARY 11, 2022]
 SEEVIRTUAL
 TEL: 604-575-1244
 www.seevirtual360.com

DISCLAIMERS:
 1. MEASUREMENTS ARE FOR PROMOTIONAL USE ONLY & ARE NOT INTENDED FOR CONSTRUCTION USE.
 ROOM DIMENSIONS ARE APPROXIMATE. MEASUREMENTS & CALCULATIONS FOR FINISHED AREAS ARE E&O INSURED.
 2. FINISHED AREAS ARE ENCLOSED AREAS IN A HOUSE THAT ARE SUITABLE FOR YEAR ROUND USE, FINISHING WALLS,
 FLOORS, AND CEILING THAT ARE SIMILAR TO THE REST OF THE HOUSE. (ANSI Z99-2013)
 3. FOR DETACHED SINGLE FAMILY HOUSES, THE FINISHED SQUARE FOOTAGE OF EACH LEVEL IS CALCULATED TO
 THE EXTERIOR FINISHED SURFACE OF THE OUTSIDE WALLS. (ANSI Z99-2013)
 4. THIS FLOOR PLAN MAY ONLY BE REPRODUCED WITH PERMISSION OF THE REALTOR(S) ON THIS FLOOR PLAN.
 * ANY MEASUREMENTS WITH AN ASTERISK (*) OR (APPROX) ARE APPROXIMATE AND FOR ILLUSTRATION PURPOSES ONLY
 AND ARE NOT E&O INSURED.

