

TOTAL FLOOR AREA: 3425 SQ.FT.
 FINISHED AREA(S): 2436 SQ.FT.
 UNFINISHED AREA(S): 989 SQ.FT.

OTHER AREA(S)

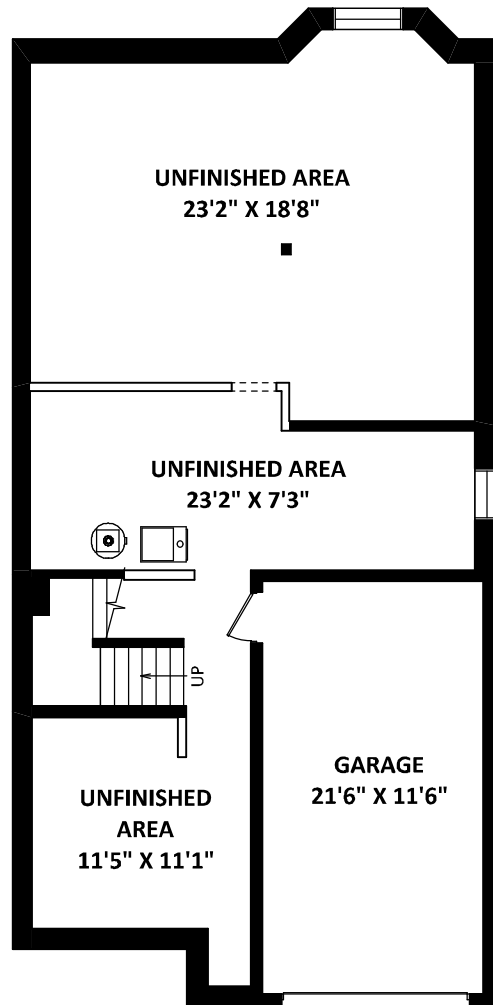
GARAGE: 273 SQ.FT.
 PORCH: 168 SQ.FT.*
 PATIO: 145 SQ.FT.*
 BALCONY: 44 SQ.FT.*

942 Maple Street
 White Rock, BC

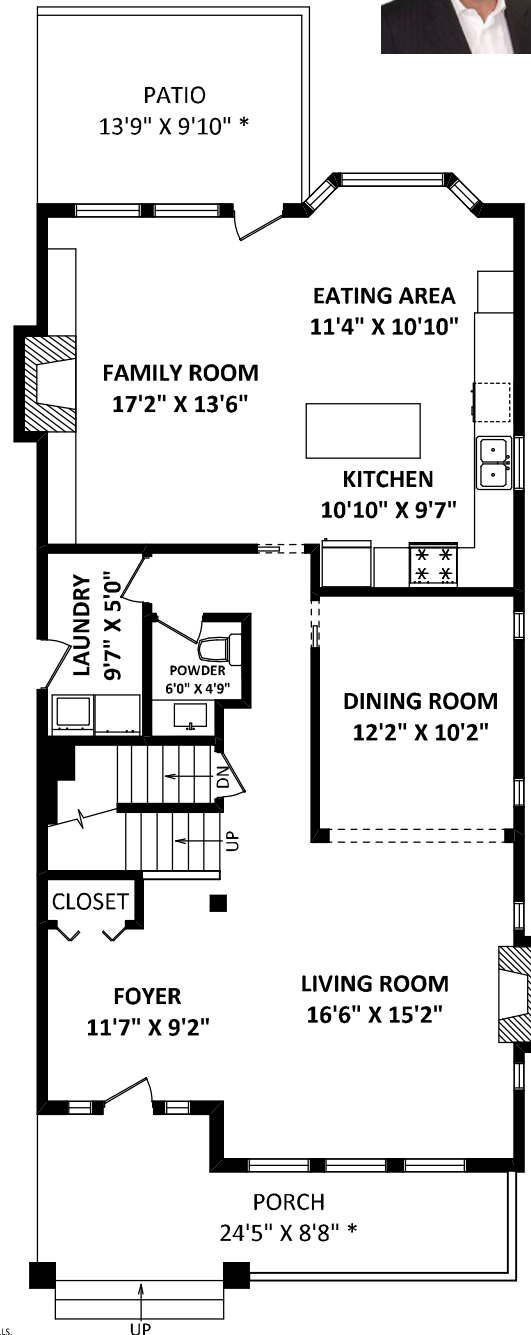


MIKE GRAHAME & TYSON ANGUS
 Personal Real Estate Corporation

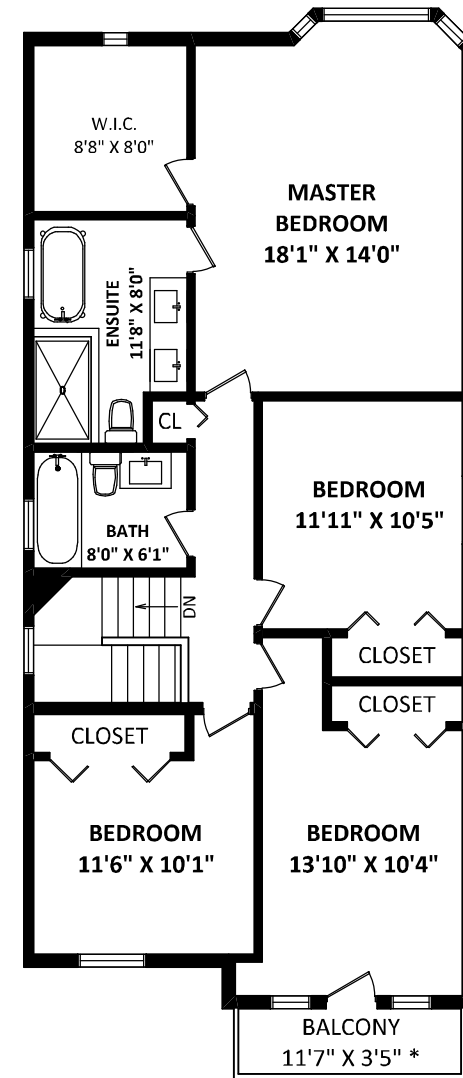
Homelife Benchmark Realty
 Phone: 604.531.1111
 sold@mikegrahame.com
 www.mikegrahame.com



LOWER FLOOR: 989 SQ.FT.
 UNFINISHED AREA(S): 989 SQ.FT.



MAIN FLOOR: 1263 SQ.FT.



UPPER FLOOR: 1173 SQ.FT.

DISCLAIMERS:
 1. MEASUREMENTS ARE FOR PROMOTIONAL USE ONLY & ARE NOT INTENDED FOR CONSTRUCTION USE. ROOM DIMENSIONS ARE APPROXIMATE. MEASUREMENTS & CALCULATIONS FOR FINISHED AREAS ARE E&O INSURED.
 2. FINISHED AREAS ARE ENCLOSED AREAS IN A HOUSE THAT ARE SUITABLE FOR YEAR-ROUND USE, EMBODYING WALLS, FLOORS, AND CEILINGS THAT ARE SIMILAR TO THE REST OF THE HOUSE. (ANSI Z765-2013)
 3. FOR DETACHED SINGLE FAMILY HOUSES, THE FINISHED SQUARE FOOTAGE OF EACH LEVEL IS CALCULATED TO THE EXTERIOR FINISHED SURFACE OF THE OUTSIDE WALLS. (ANSI Z765-2013)
 4. THIS FLOOR PLAN MAY ONLY BE REPRODUCED WITH PERMISSION OF THE REALTOR(S) ON THIS FLOOR PLAN.
 * ANY MEASUREMENTS WITH AN ASTERISK (*) ARE APPROXIMATE AND FOR ILLUSTRATION PURPOSES ONLY AND ARE NOT E&O INSURED.

[FEBRUARY 3, 2022]



TEL: 604-575-1244
 www.seevirtual360.com

