

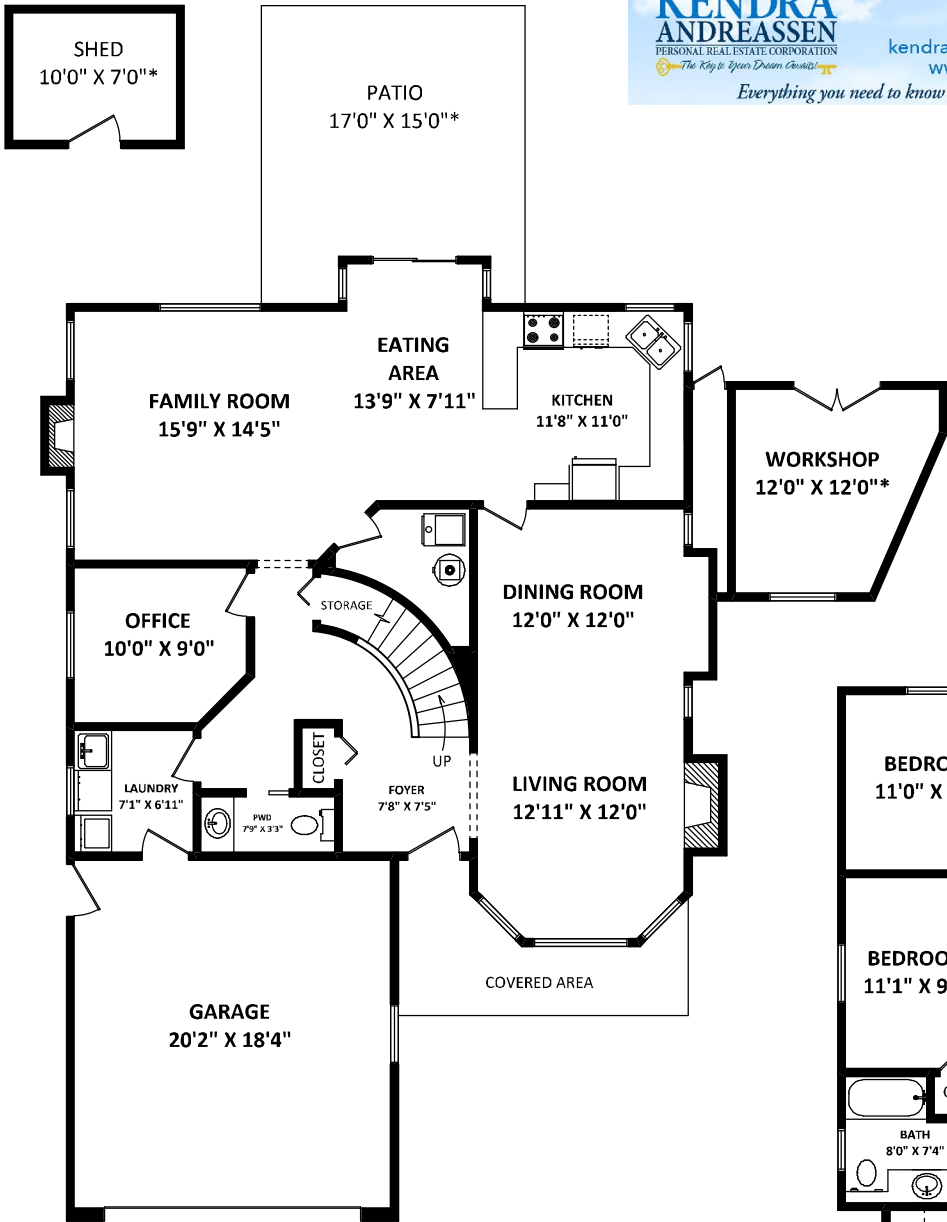


**Kendra Andreassen**  
Personal Real Estate Corporation

Mobile: 604-312-4125  
Office: 604-530-4141  
kendraandreassen@realtynance.com  
www.kendraandreassen.com



*Everything you need to know about real estate in the Fraser Valley!*



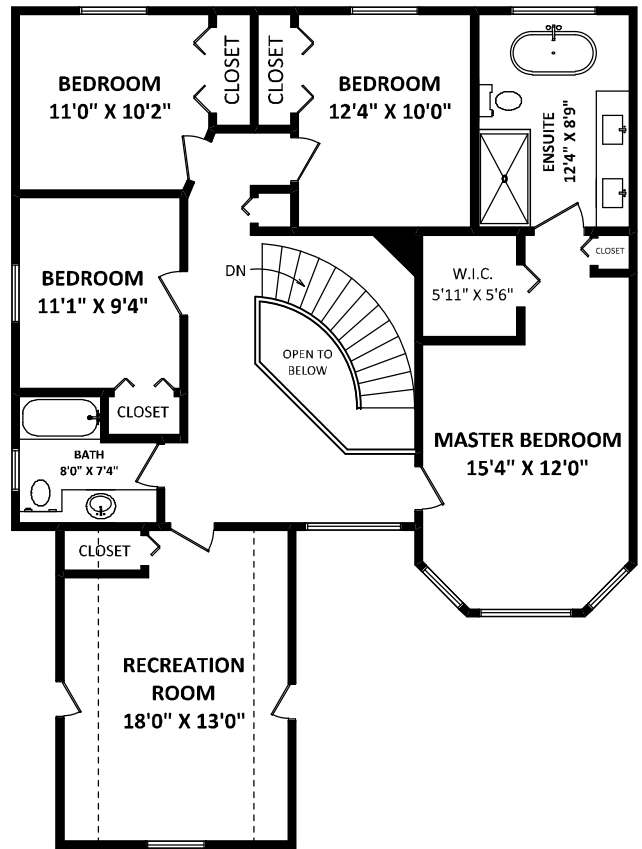
**MAIN FLOOR: 1260 SQ.FT.**

**TOTAL FLOOR AREA: 2628 SQ.FT. \*\***

**OTHER AREA(S)**

GARAGE:	401 SQ.FT.
WORKSHOP:	140 SQ.FT.*
PATIO:	239 SQ.FT.*
SHED:	85 SQ.FT.*

\*\*INCLUDES 89 SQ.FT. OF LOW CEILING AREA(S), BOUND BY DOTTED LINES.



**UPPER FLOOR: 1368 SQ.FT.\*\***

\*\*INCLUDES 89 SQ.FT. OF LOW CEILING AREA(S), BOUND BY DOTTED LINES.

[OCTOBER 7, 2021]



TEL: 604-575-1244  
www.seevirtual360.com

DISCLAIMERS:  
1. MEASUREMENTS ARE FOR PROMOTIONAL USE ONLY & ARE NOT INTENDED FOR CONSTRUCTION USE. ROOM DIMENSIONS ARE APPROXIMATE. MEASUREMENTS & CALCULATIONS FOR FINISHED AREAS ARE E&O INSURED.  
2. FINISHED AREAS ARE ENCLOSED AREAS IN A HOUSE THAT ARE SUITABLE FOR YEAR-ROUND USE, EMBODYING WALLS, FLOORS, AND CEILINGS THAT ARE SIMILAR TO THE REST OF THE HOUSE. (ANSI Z765-2013)  
3. FOR DETACHED SINGLE-FAMILY HOUSES, THE FINISHED SQUARE FOOTAGE OF EACH LEVEL IS CALCULATED TO THE EXTERIOR FINISHED SURFACE OF THE OUTSIDE WALLS. (ANSI Z765-2013)  
4. THIS FLOOR PLAN MAY ONLY BE REPRODUCED WITH PERMISSION OF THE REALTOR(S) ON THIS FLOOR PLAN.  
\* ANY MEASUREMENTS WITH AN ASTERISK (\*) OR (APPROX) ARE APPROXIMATE AND FOR ILLUSTRATION PURPOSES ONLY AND ARE NOT E&O INSURED.

