

**TOTAL FINISHED AREA: 1842 SQ.FT.\*\***

**MAIN HOUSE: 1690 SQ.FT.**

**OFFICE: 152 SQ.FT.**

**OTHER AREA(S)**

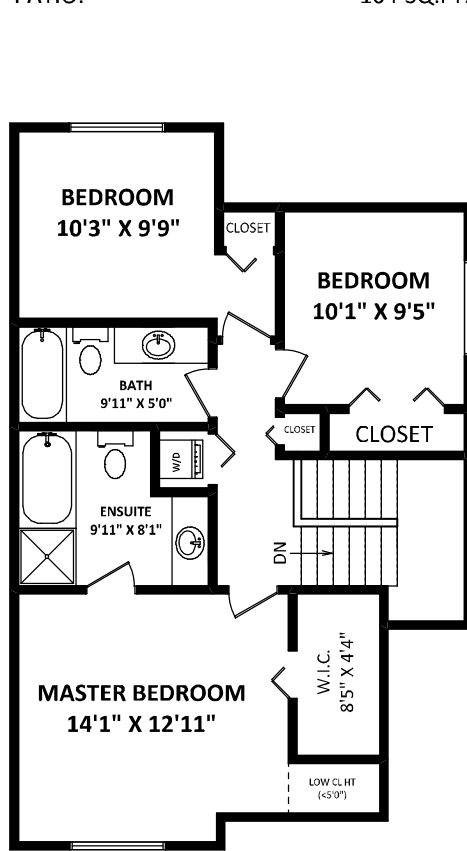
**GARAGE & STORAGE: 486 SQ.FT.**

**DECK: 130 SQ.FT.\***

**PATIO: 104 SQ.FT.\***

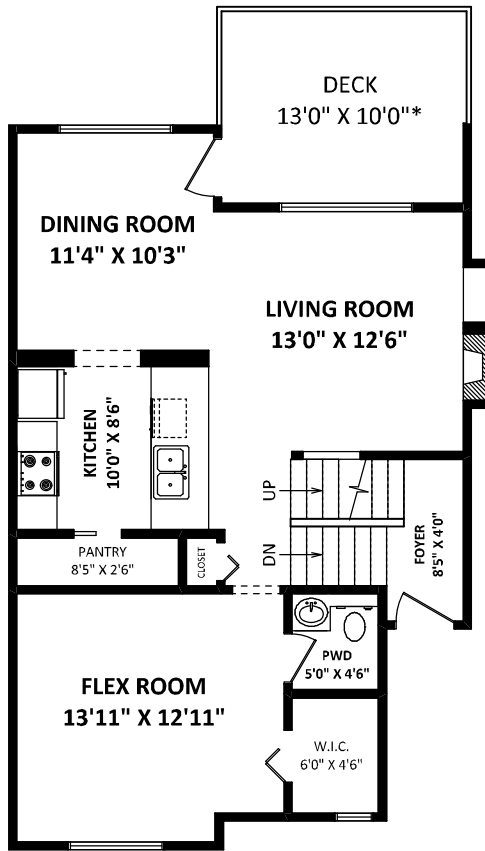


**#81 8881 Walters Street  
Chilliwack, BC**

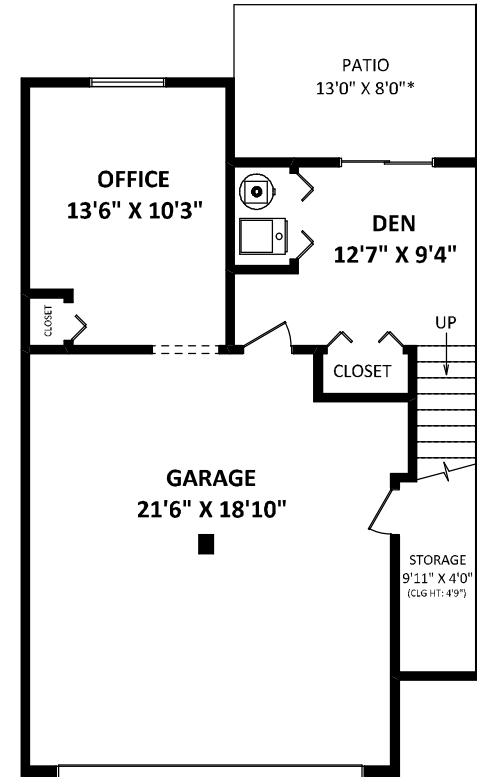


**UPPER FLOOR: 761 SQ.FT.\*\***

**\*\*EXCLUDES LOW CEILING AREA(S),  
BOUND BY DOTTED LINES.**



**MAIN FLOOR: 785 SQ.FT.**



**LOWER FLOOR**

**DEN: 144 SQ.FT.  
OFFICE: 152 SQ.FT.**

**DISCLAIMERS:**

1. MEASUREMENTS ARE FOR PROMOTIONAL USE ONLY & ARE NOT INTENDED FOR CONSTRUCTION USE.
2. ROOM DIMENSIONS ARE APPROXIMATE. MEASUREMENTS & CALCULATIONS FOR FINISHED AREAS ARE E&O INSURED.
3. FINISHED AREAS ARE ENCLOSED AREAS IN A HOUSE THAT ARE SUITABLE FOR YEAR-ROUND USE, EMBODYING WALLS, FLOORS, AND CEILINGS THAT ARE SIMILAR TO THE REST OF THE HOUSE. (ANSI Z765-2013)
4. FOR STRATA LOTS, SQUARE FOOTAGE OF EACH LEVEL IS CALCULATED FROM THE CENTERLINE OF THE EXTERIOR WALLS OR SHARED WALLS OF THE STRATA LOT TO THE CENTERLINE OF THE EXTERIOR WALLS OR SHARED WALLS OF THE ADJACENT STRATA LOTS. (REF. STRATA PROPERTY ACT, SECTION 48)
5. THIS FLOOR PLAN MAY ONLY BE REPRODUCED WITH PERMISSION OF THE REALTOR(S) ON THIS FLOOR PLAN.
- \* ANY MEASUREMENTS WITH AN ASTERISK (\*) OR (APPROX) ARE APPROXIMATE AND FOR ILLUSTRATION PURPOSES ONLY AND ARE NOT E&O INSURED.

[SEPTEMBER 22, 2021]



TEL: 604-575-1244

www.seevirtual360.com

