

**3960 BARGEN DRIVE
RICHMOND, BC**



TONY HEPBURN

RE/MAX Crest Realty

Cell: 604-506-3883

Office: 604-732-1336

www.HepburnProperties.com

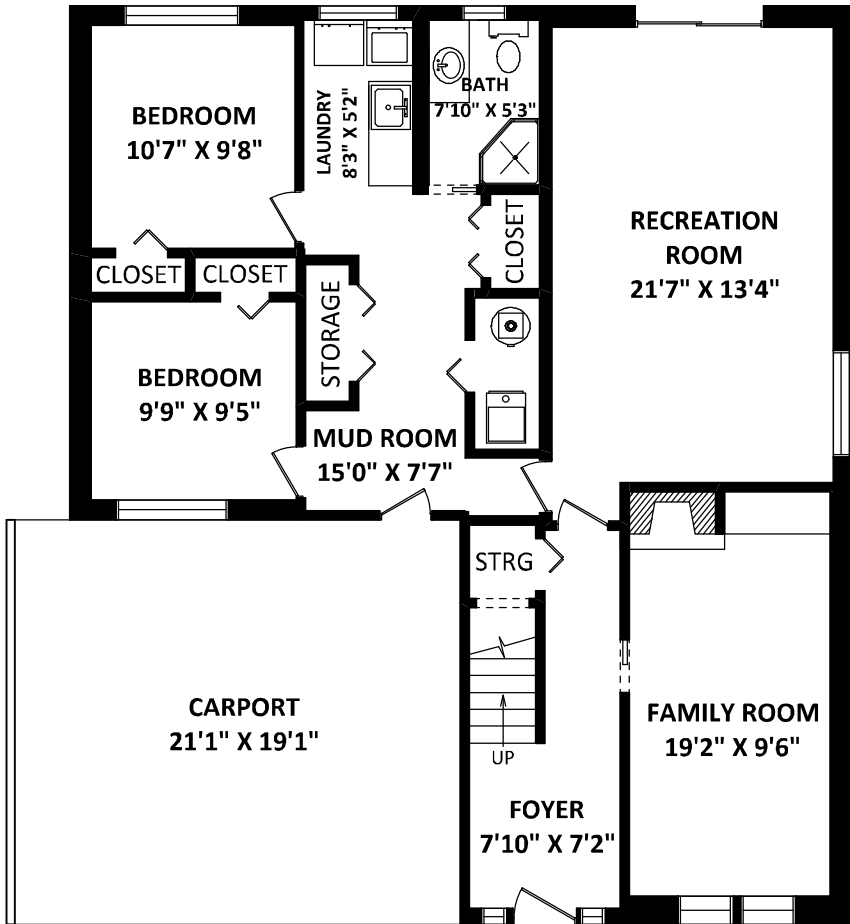
Tony@HepburnProperties.com

TOTAL FINISHED AREA: 2714 SQ.FT.

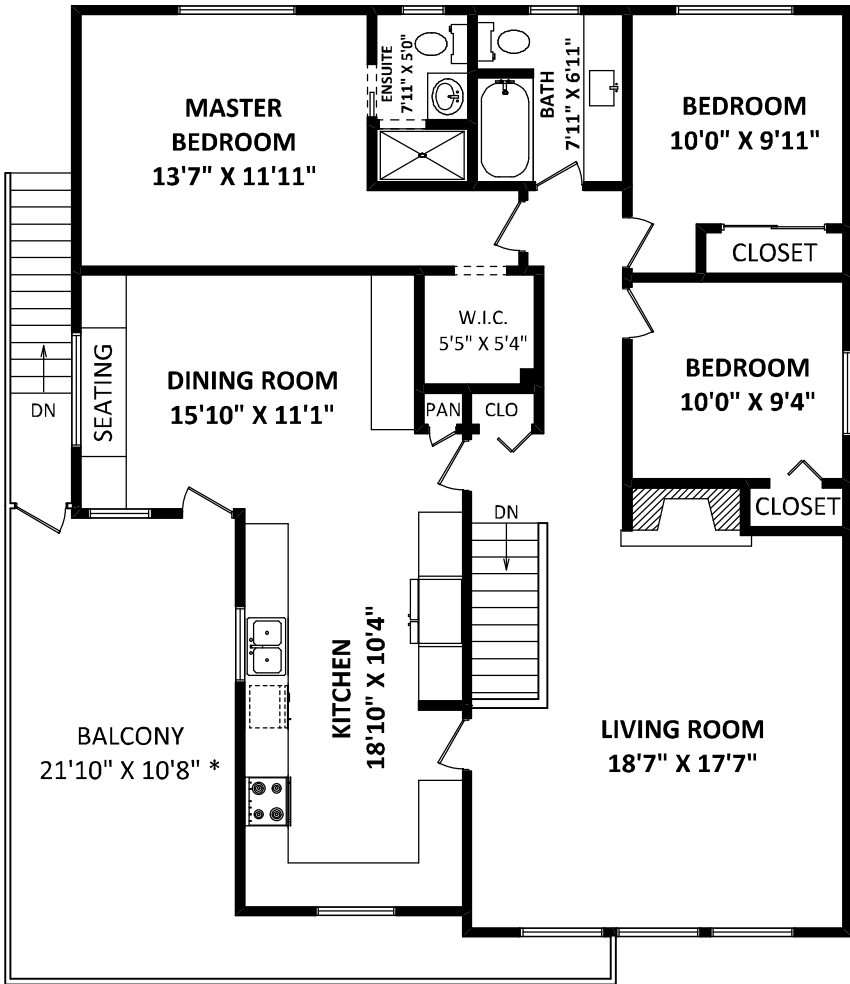
OTHER AREA(S)

CARPORT: 412 SQ.FT.

BALCONY: 295 SQ.FT.*



LOWER FLOOR: 1251 SQ.FT.



MAIN FLOOR: 1463 SQ.FT.

[JULY 15, 2021]



TEL: 604-575-1244
www.seevirtual360.com

DISCLAIMERS:

- 1. MEASUREMENTS ARE FOR PROMOTIONAL USE ONLY & ARE NOT INTENDED FOR CONSTRUCTION USE. ROOM DIMENSIONS ARE APPROXIMATE. MEASUREMENTS & CALCULATIONS FOR FINISHED AREAS ARE E&O INSURED.
- 2. FINISHED AREAS ARE ENCLOSED AREAS IN A HOUSE THAT ARE SUITABLE FOR YEAR-ROUND USE, EMBODYING WALLS, FLOORS, AND CEILINGS THAT ARE SIMILAR TO THE REST OF THE HOUSE. (ANSI Z765-2013)
- 3. FOR DETACHED SINGLE-FAMILY HOUSES, THE FINISHED SQUARE FOOTAGE OF EACH LEVEL IS CALCULATED TO THE EXTERIOR FINISHED SURFACE OF THE OUTSIDE WALLS. (ANSI Z765-2013)
- 4. THIS FLOOR PLAN MAY ONLY BE REPRODUCED WITH PERMISSION OF THE REALTOR(S) ON THIS FLOOR PLAN.
- * ANY MEASUREMENTS WITH AN ASTERISK (*) OR (APPROX) ARE APPROXIMATE AND FOR ILLUSTRATION PURPOSES ONLY AND ARE NOT E&O INSURED.

