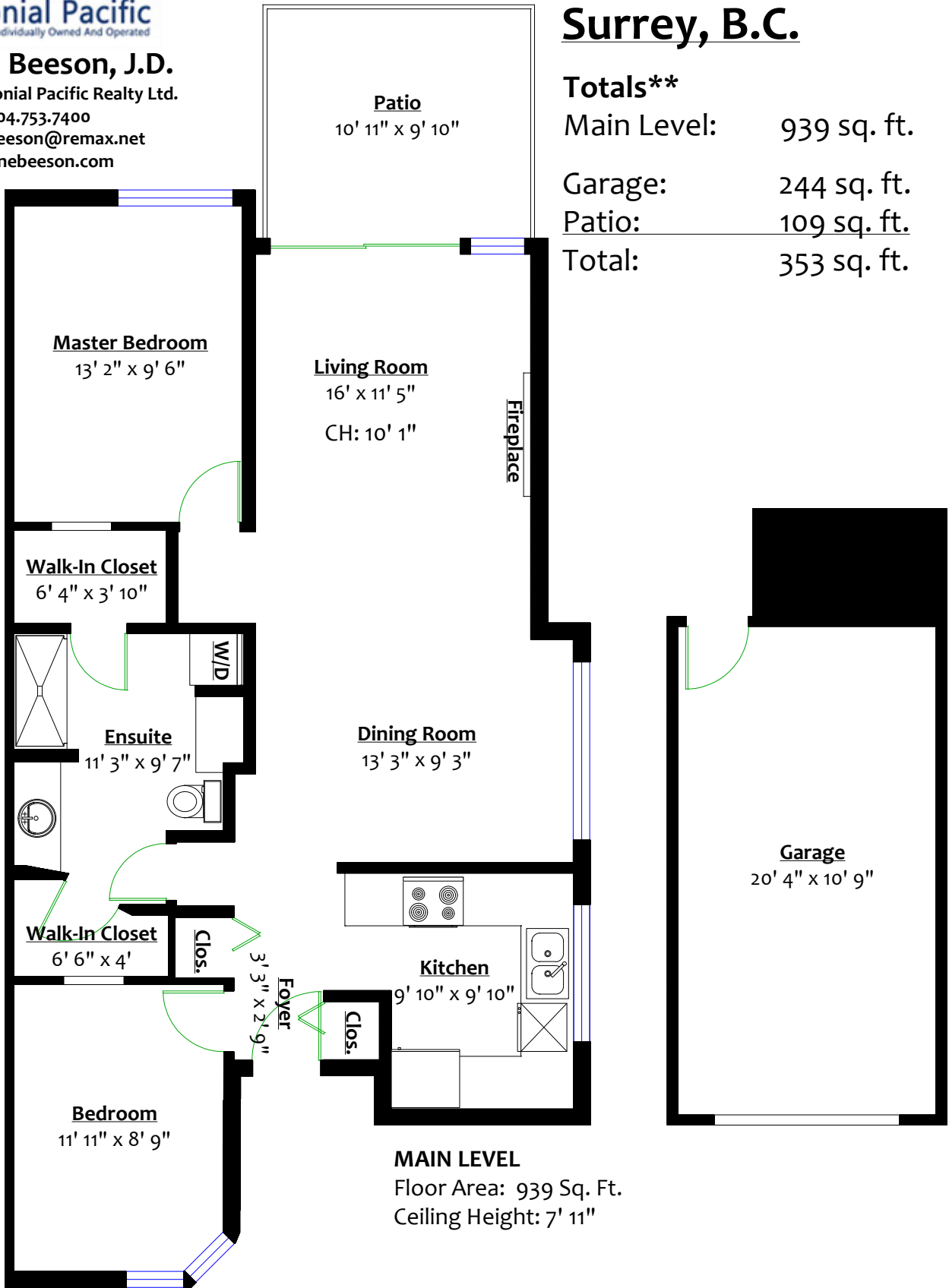


**Joanne Beeson, J.D.**  
 RE/MAX Colonial Pacific Realty Ltd.  
 604.753.7400  
 joannebeeson@remax.net  
 joannebeeson.com

**#1 - 14263 18A Avenue,  
 Surrey, B.C.**

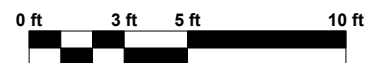
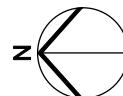
**Totals\*\***

Main Level:	939 sq. ft.
Garage:	244 sq. ft.
Patio:	109 sq. ft.
<b>Total:</b>	<b>353 sq. ft.</b>



**MAIN LEVEL**

Floor Area: 939 Sq. Ft.  
 Ceiling Height: 7' 11"



\*\* While all reasonable attempts have been made to ensure accuracy and the square footage and room dimensions are believed to be correct to ANSI Standards, due to the possibility of human error the information cannot be guaranteed. E&O Insured for \$1,000,000