



12390 216 Street
Maple Ridge, BC

STEVE & GLORIA HAMILTON

Royal LePage - Brookside Realty

Phone: 604-467-8881

www.stevehamilton.ca

www.gloriahamilton.ca

TOTAL FLOOR AREA: 3981 SQ.FT.

FINISHED AREA(S): 2387 SQ.FT.

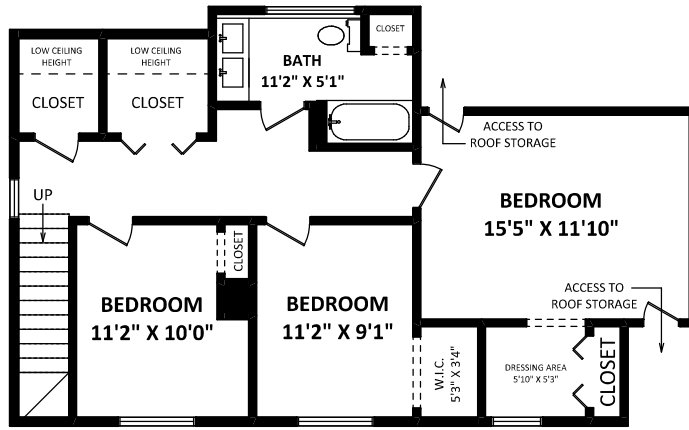
UNFINISHED AREA(S): 1459 SQ.FT.

SOLARIUM: 135 SQ.FT.

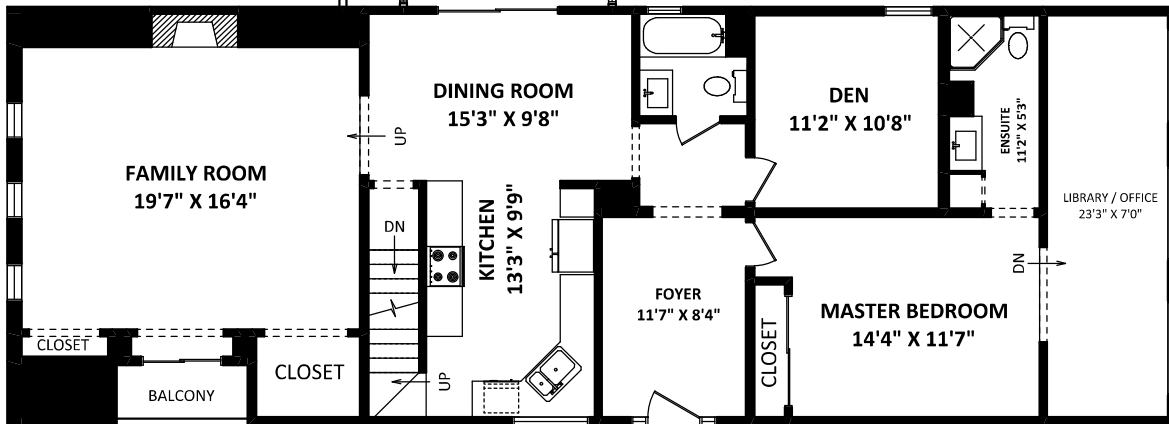
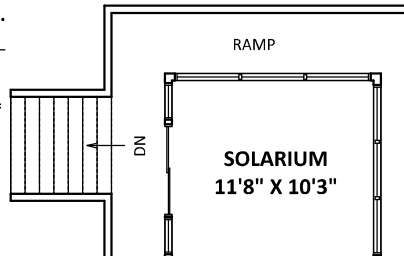
OTHER AREA(S)

PORCH: 140 SQ.FT.*

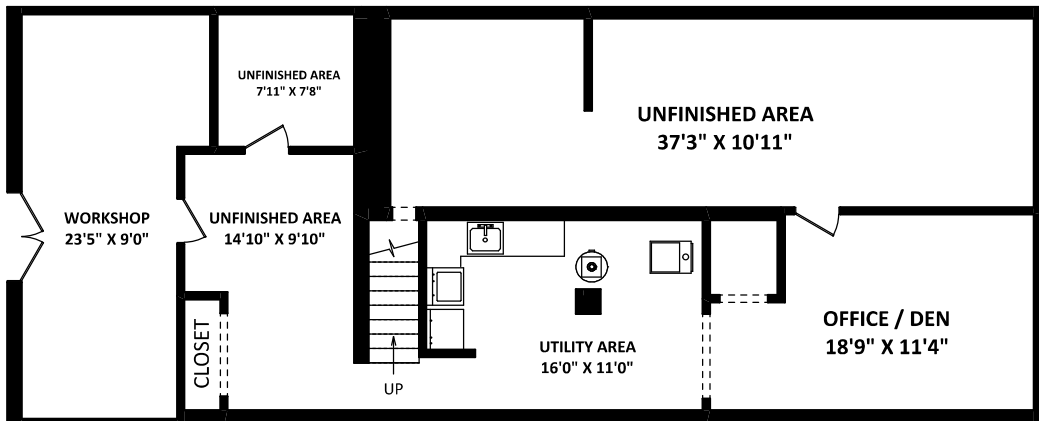
**INCLUDES LOW CEILING AREA(S), BOUND BY DOTTED LINES.



UPPER FLOOR: 832 SQ.FT.

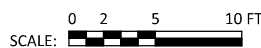


MAIN FLOOR: 1555 SQ.FT.



UNFINISHED LOWER FLOOR: 1459 SQ.FT.

DISCLAIMERS:
1. MEASUREMENTS ARE FOR PROMOTIONAL USE ONLY & ARE NOT INTENDED FOR CONSTRUCTION USE.
2. ROOM DIMENSIONS ARE APPROXIMATE. MEASUREMENTS & CALCULATIONS FOR FINISHED AREAS ARE E&O INSURED.
3. FOR DETACHED SINGLE-FAMILY HOUSES, THE FINISHED SQUARE FOOTAGE OF EACH LEVEL IS CALCULATED TO THE EXTERIOR FINISHED SURFACE OF THE OUTSIDE WALLS. (ANSI Z765-2013)
4. THIS FLOOR PLAN MAY ONLY BE REPRODUCED WITH PERMISSION OF THE REALTOR(S) ON THIS FLOOR PLAN.
* ANY MEASUREMENTS WITH AN ASTERISK (*) OR (APPROX) ARE APPROXIMATE AND FOR ILLUSTRATION PURPOSES ONLY AND ARE NOT E&O INSURED.



[JUNE 2, 2021]



TEL: 604-575-1244
www.seevirtual360.com