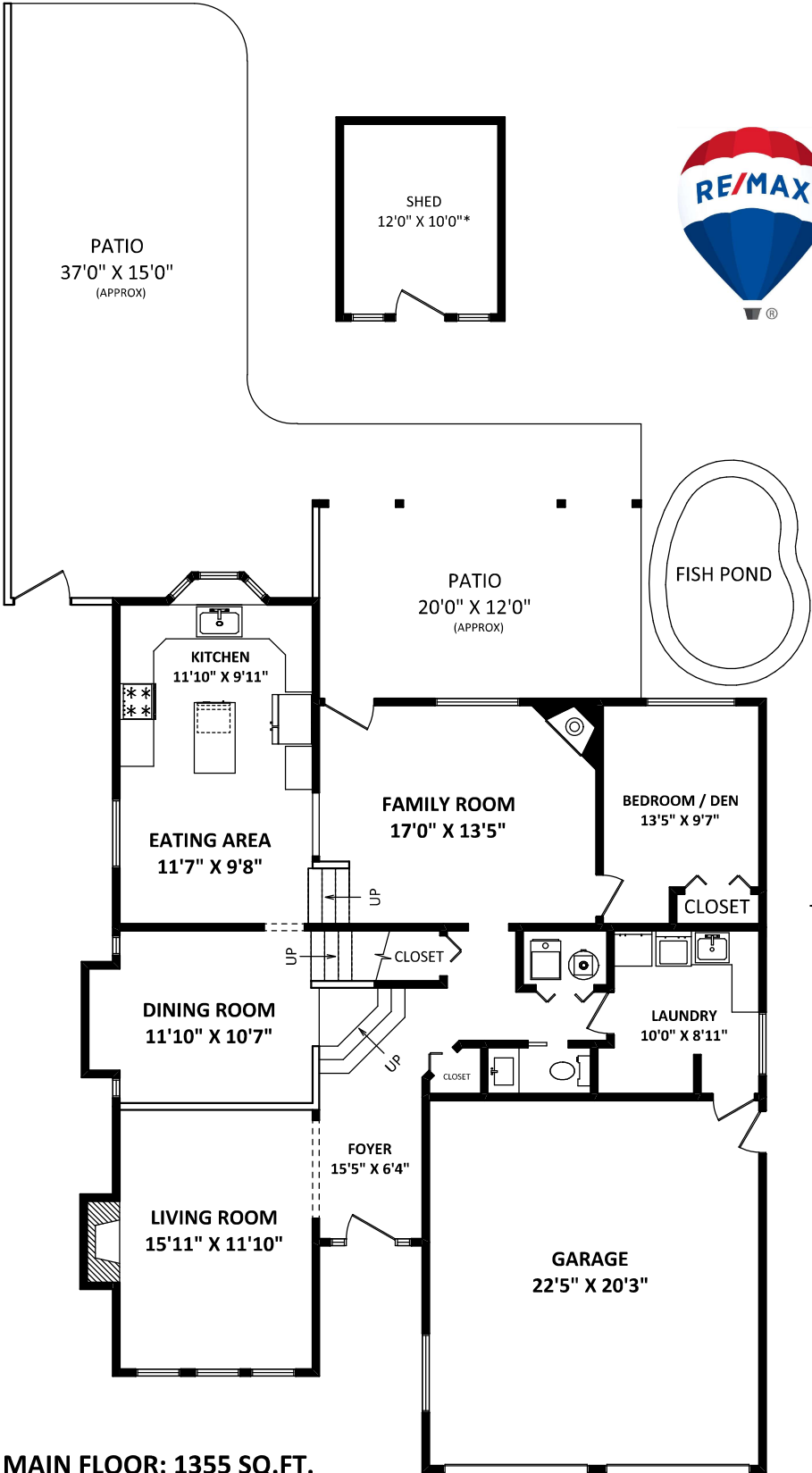


24724 122A Avenue
Maple Ridge, BC

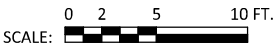
GARY FRAIPONT & LORRAINE MANYK

RE/MAX LifeStyles Realty
Maple Ridge

Cell: 604-828-8634
Office: 604-466-2838
lorraine@rltylink.com

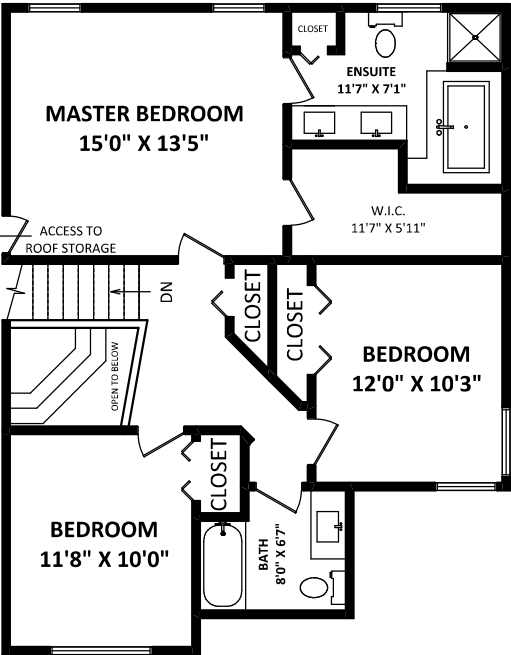
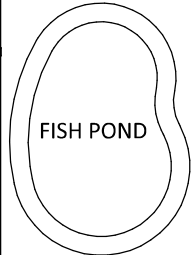


MAIN FLOOR: 1355 SQ.FT.



[MAY 31, 2021]
SEE VIRTUAL
MARKETING & PHOTOGRAPHY
TEL: 604-575-1244
www.seevirtual360.com

DISCLAIMERS:
1. MEASUREMENTS ARE FOR PROMOTIONAL USE ONLY & ARE NOT INTENDED FOR CONSTRUCTION USE.
2. ROOM DIMENSIONS ARE APPROXIMATE. MEASUREMENTS & CALCULATIONS FOR FINISHED AREAS ARE E&O INSURED.
3. FINISHED AREAS ARE ENCLOSED AREAS IN A HOUSE THAT ARE SUITABLE FOR YEAR-ROUND USE, EMBODYING WALLS, FLOORS, AND CEILINGS THAT ARE SIMILAR TO THE REST OF THE HOUSE. (ANSI Z765-2013)
4. FOR DETACHED SINGLE-FAMILY HOUSES, THE FINISHED SQUARE FOOTAGE OF EACH LEVEL IS CALCULATED TO THE EXTERIOR FINISHED SURFACE OF THE OUTSIDE WALLS. (ANSI Z765-2013)
5. THIS FLOOR PLAN MAY ONLY BE REPRODUCED WITH PERMISSION OF THE REALTOR(S) ON THIS FLOOR PLAN.
* ANY MEASUREMENTS WITH AN ASTERISK (*) OR (APPROX) ARE APPROXIMATE AND FOR ILLUSTRATION PURPOSES ONLY AND ARE NOT E&O INSURED.



UPPER FLOOR: 861 SQ.FT.

TOTAL FINISHED AREA: 2216 SQ.FT.

<i>OTHER AREA(S)</i>	
GARAGE:	478 SQ.FT.
PATIOS:	810 SQ.FT.*
SHED:	130 SQ.FT.*