

**3451 Jervis Street
Port Coquitlam, BC**

DEBORAH & LEO LeBLANC

Royal LePage West Real Estate Services



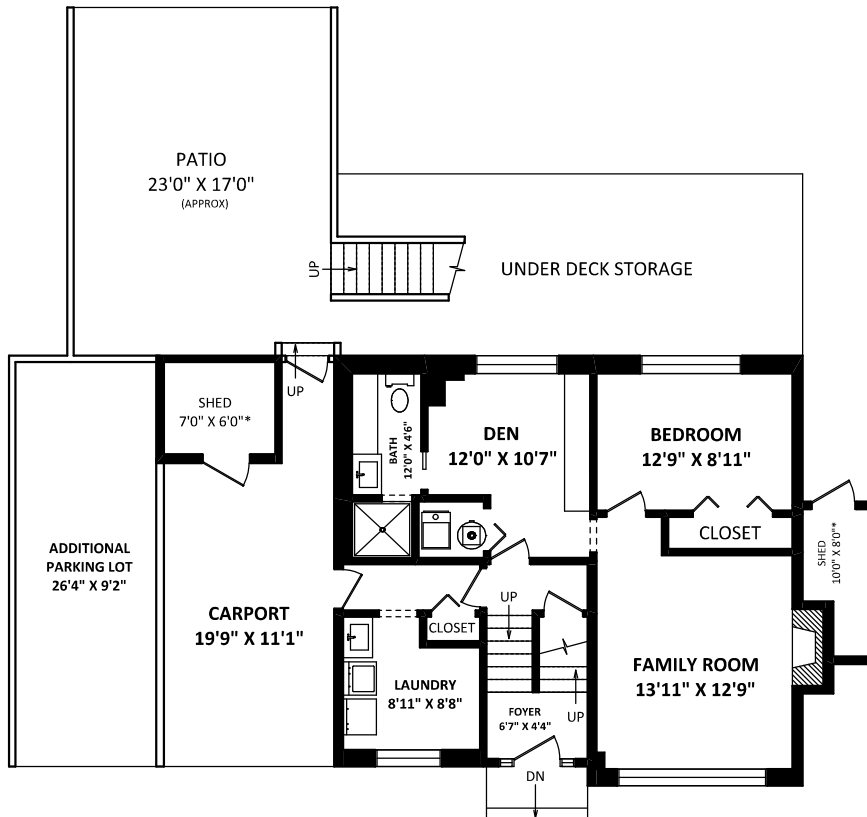
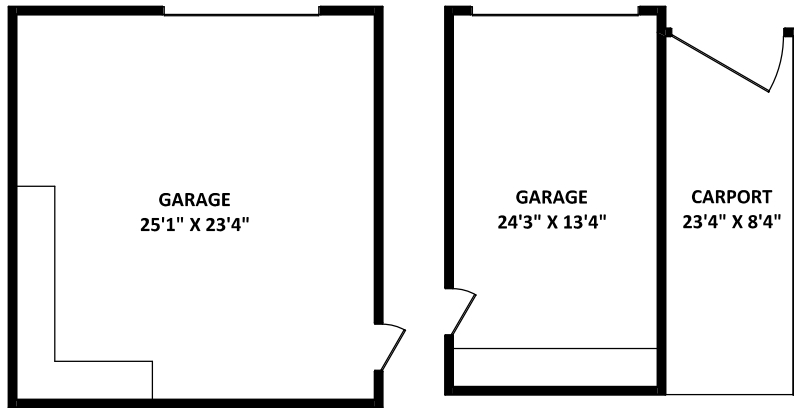
Cell-Deborah: 604-760-2356
Cell-Leo: 604-808-8807
Office: 604-939-6666
debleo@telus.net
www.debleo.ca



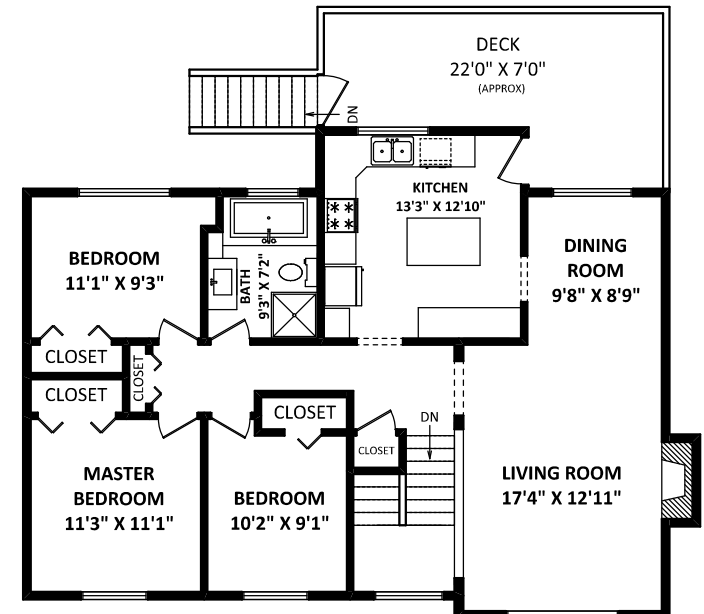
TOTAL FINISHED AREA: 2032 SQ.FT.

OTHER AREA(S)

GARAGES:	997 SQ.FT.
CARPORTS:	440 SQ.FT.
ADDITIONAL PARKING LOT:	255 SQ.FT.*
DECK:	215 SQ.FT.*
PATIO:	400 SQ.FT.*
SHEDS:	60 SQ.FT.*



LOWER FLOOR: 833 SQ.FT.



MAIN FLOOR: 1199 SQ.FT.

[APRIL 27, 2021]



TEL: 604-575-1244
www.seevirtual360.com

DISCLAIMERS:
1. MEASUREMENTS ARE FOR PROMOTIONAL USE ONLY & ARE NOT INTENDED FOR CONSTRUCTION USE.
2. FINISHED AREAS ARE APPROXIMATE. MEASUREMENTS & CALCULATIONS FOR FINISHED AREAS ARE E&O INSURED.
3. FINISHED AREAS ARE ENCLOSED AREAS IN A HOUSE THAT ARE SUITABLE FOR YEAR ROUND USE, EMBODYING WALLS, FLOORS, AND CEILINGS THAT ARE SIMILAR TO THE REST OF THE HOUSE. (ANSI Z765-2013)
4. FOR DETACHED SINGLE-FAMILY HOUSES, THE FINISHED SQUARE FOOTAGE OF EACH LEVEL IS CALCULATED TO THE EXTERIOR FINISHED SURFACE OF THE OUTSIDE WALLS. (ANSI Z765-2013)
5. THIS FLOOR PLAN MAY ONLY BE REPRODUCED WITH PERMISSION OF THE REALTOR(S) ON THIS FLOOR PLAN.
* ANY MEASUREMENTS WITH AN ASTERISK (*) OR (APPROX) ARE APPROXIMATE AND FOR ILLUSTRATION PURPOSES ONLY AND ARE NOT E&O INSURED.



SCALE: 0 2 5 10 FT.