



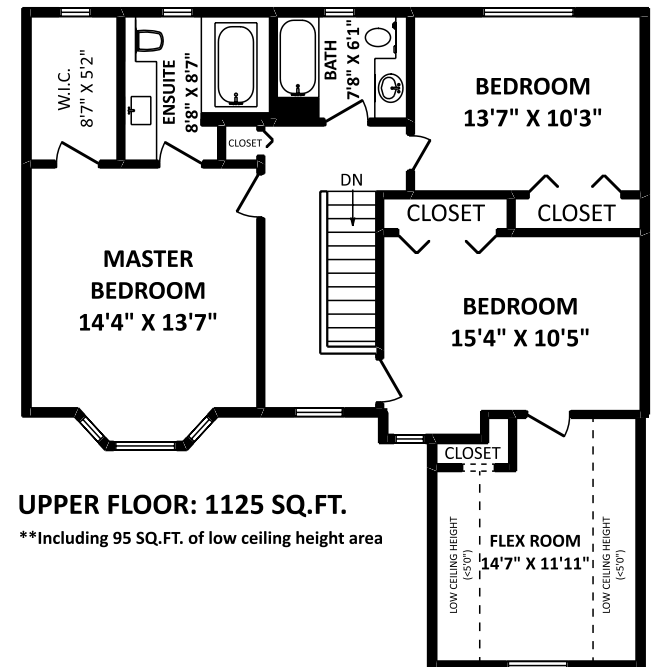
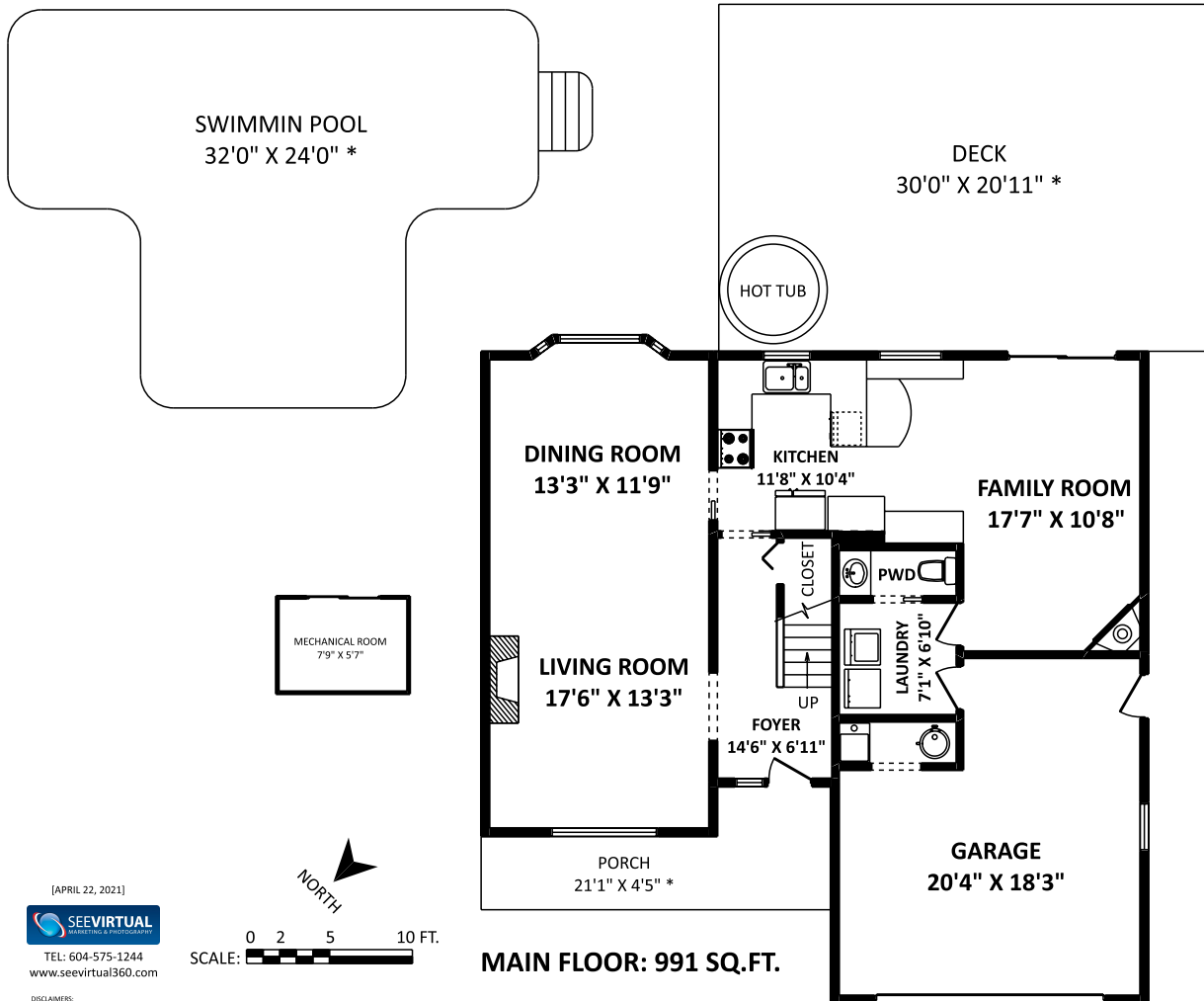
**THE WALKER REAL ESTATE TEAM**  
We Run On Experience. [www.WalkerRealEstate.ca](http://www.WalkerRealEstate.ca)



604 889 5004 | [info@WalkerRealEstate.ca](mailto:info@WalkerRealEstate.ca)  
Serving South Surrey, White Rock and Vancouver Markets

Dominion Lending Centers, 15 Yrs Mortgage Broker experience | 23 Year Medallion Winners | 25 Years Building & Development Experience

## 5026 Mariner Place Ladner, BC



### TOTAL FINISHED AREA: 2116 SQ.FT.

#### OTHER AREAS

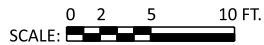
GARAGE:	367 SQ.FT.
PORCH:	114 SQ.FT.*
DECK:	628 SQ.FT.*
MECHANICAL ROOM:	48 SQ.FT.*

\*\*Including 95 SQ.FT. of low ceiling height area

[APRIL 22, 2021]



TEL: 604-575-1244  
[www.seevirtual360.com](http://www.seevirtual360.com)



**DISCLAIMERS:**  
1. MEASUREMENTS ARE FOR PROMOTIONAL USE ONLY & ARE NOT INTENDED FOR CONSTRUCTION USE.  
ROOM DIMENSIONS ARE APPROXIMATE. MEASUREMENTS & CALCULATIONS FOR FINISHED AREAS ARE ALSO REQUIRED.  
2. FINISHED AREAS ARE ENCLOSED AREAS IN A HOUSE THAT ARE SUITABLE FOR YEAR-ROUND USE, EMBODYING WALLS, FLOORS, AND CEILINGS THAT ARE SIMILAR TO THE REST OF THE HOUSE. (ANSI Z765-2021).  
3. FOR DETACHED SINGLE-FAMILY HOUSES, THE FINISHED SQUARE FOOTAGE OF EACH LEVEL IS CALCULATED TO THE EXTERIOR FINISHED SURFACE OF THE OUTSIDE WALLS. (ANSI Z765-2021).  
4. THIS FLOOR PLAN MAY ONLY BE REPRODUCED WITH PERMISSION OF THE REALTOR(S) ON THIS FLOOR PLAN.  
\* ANY MEASUREMENTS WITH AN ASTERISK (\*) OR (APPROX) ARE APPROXIMATE AND FOR ILLUSTRATION PURPOSES ONLY AND ARE NOT 860 INSURED.