

12183 Cherrywood Drive Maple Ridge, BC



GARY FRAIPONT & LORRAINE MANYK

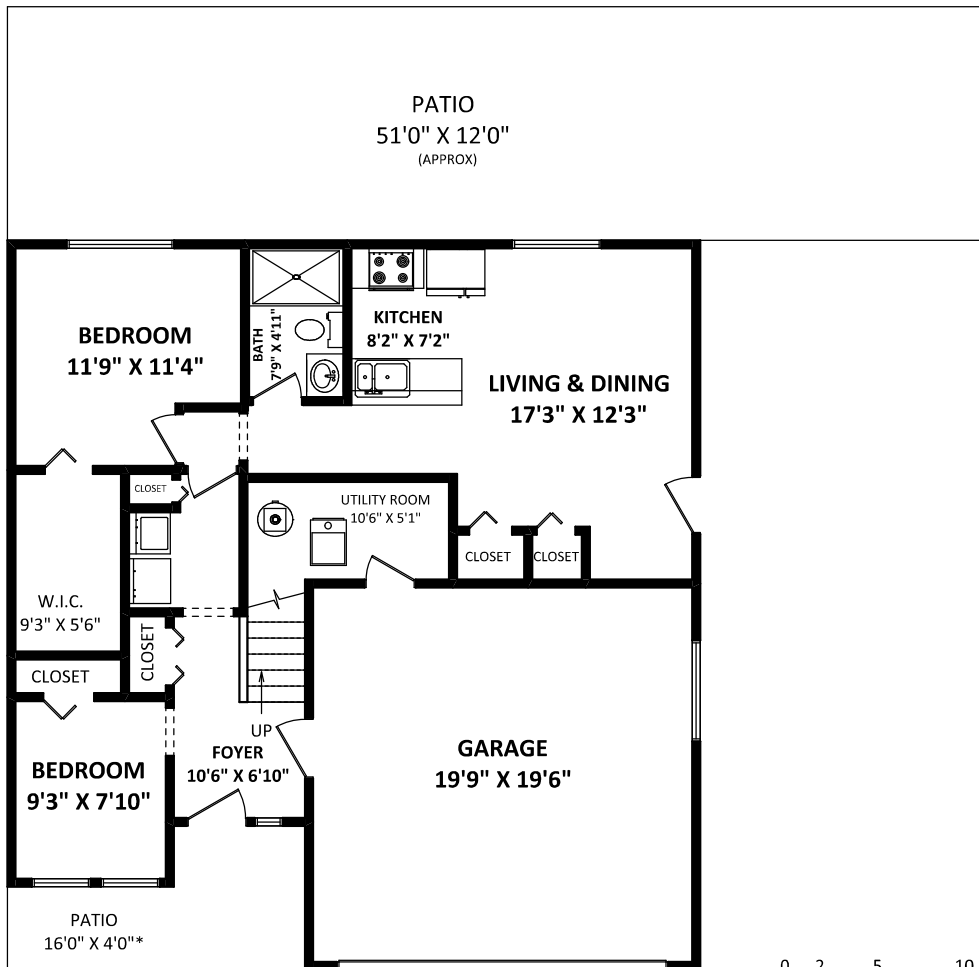
*RE/MAX LifeStyles Realty
Maple Ridge*

Cell: 604-828-8634
Office: 604-466-2838
lorraine@rltylink.com

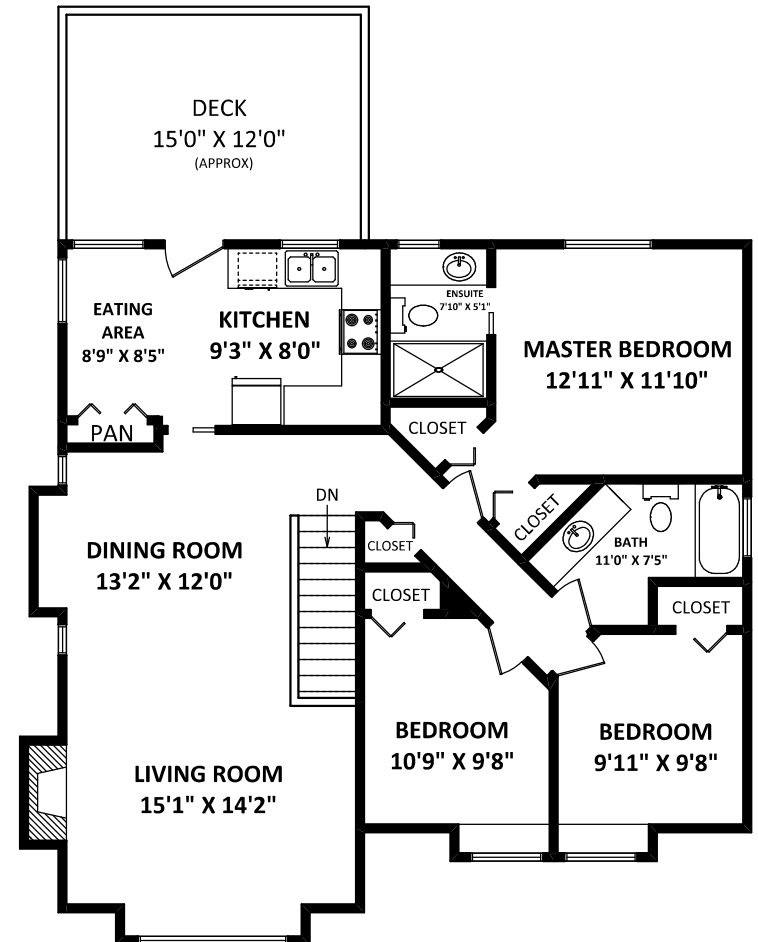
TOTAL FINISHED AREA: 2084 SQ.FT.

OTHER AREA(S)

GARAGE: 405 SQ.FT.
DECK: 200 SQ.FT.*
PATIOS: 710 SQ.FT.*



LOWER FLOOR: 878 SQ.FT.



MAIN FLOOR: 1206 SQ.FT.

0 2 5 10 FT.
SCALE:



NORTH

[APRIL 20, 2021]

TEL: 604-575-1244
www.seevirtual360.com

DISCLAIMERS:
1. MEASUREMENTS ARE FOR PROMOTIONAL USE ONLY & ARE NOT INTENDED FOR CONSTRUCTION USE.
2. FINISHED AREAS ARE ENCLOSED AREAS IN A HOUSE THAT ARE SUITABLE FOR YEAR-ROUND USE, EMBODYING WALLS, FLOORS, AND CEILINGS THAT ARE SIMILAR TO THE REST OF THE HOUSE. (ANSI Z765-2013)
3. FOR DETACHED SINGLE-FAMILY HOUSES, THE FINISHED SQUARE FOOTAGE OF EACH LEVEL IS CALCULATED TO THE EXTERIOR FINISHED SURFACE OF THE OUTSIDE WALLS. (ANSI Z765-2013)
4. THIS FLOOR PLAN MAY ONLY BE REPRODUCED WITH PERMISSION OF THE REALTOR(S) ON THIS FLOOR PLAN.
* ARE NOT E&O INSURED.