



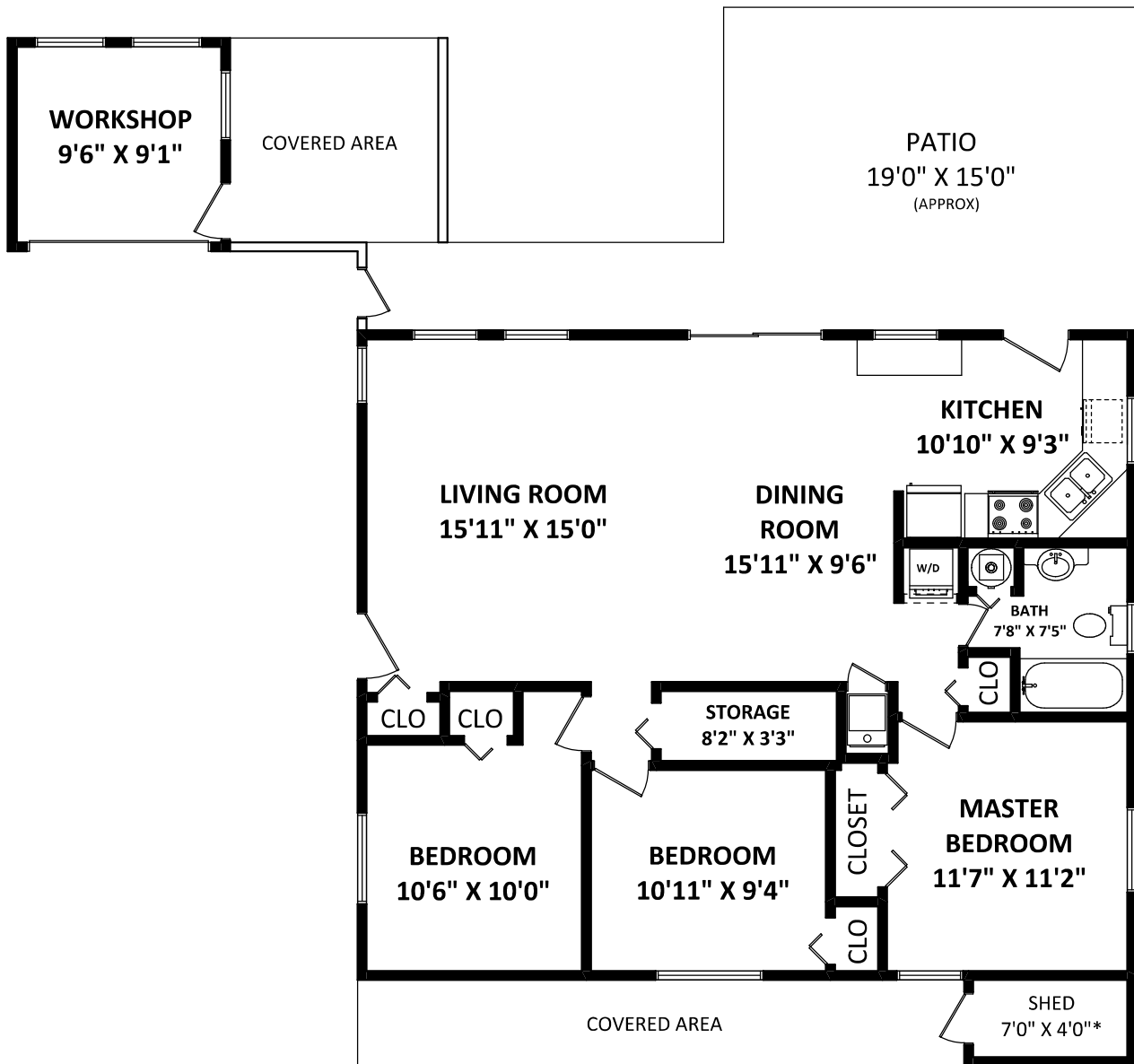
# 21920 Wicklow Way Maple Ridge, BC

**AJIA GLOVER**

**TOTAL FINISHED AREA: 1091 SQ.FT.**

Royal LePage West Real Estate Services  
Cell: 604-315-8586  
Office: 604-581-3838  
ajia@ajiatherealtor.com  
www.ajiatherealtor.com

*OTHER AREA(S)*  
WORKSHOP: 103 SQ.FT.  
PATIO: 288 SQ.FT.\*  
SHED: 30 SQ.FT.\*



DISCLAIMERS:  
1. MEASUREMENTS ARE FOR PROMOTIONAL USE ONLY & ARE NOT INTENDED FOR CONSTRUCTION USE.  
ROOM DIMENSIONS ARE APPROXIMATE. MEASUREMENTS & CALCULATIONS FOR FINISHED AREAS ARE E&O INSURED.  
2. FINISHED AREAS ARE ENCLOSED AREAS IN A HOUSE THAT ARE SUITABLE FOR YEAR-ROUND USE, EMBODYING WALLS, FLOORS, AND CEILINGS THAT ARE SIMILAR TO THE REST OF THE HOUSE. (ANSI Z765-2013)  
3. FOR DETACHED SINGLE-FAMILY HOUSES, THE FINISHED SQUARE FOOTAGE OF EACH LEVEL IS CALCULATED TO THE EXTERIOR FINISHED SURFACE OF THE OUTSIDE WALLS. (ANSI Z765-2013)  
4. THIS FLOOR PLAN MAY ONLY BE REPRODUCED WITH PERMISSION OF THE REALTOR(S) ON THIS FLOOR PLAN.  
\* ANY MEASUREMENTS WITH AN ASTERISK (\*) OR (APPROX) ARE APPROXIMATE AND FOR ILLUSTRATION PURPOSES ONLY AND ARE NOT E&O INSURED.

[APRIL 6, 2021]



TEL: 604-575-1244  
www.seevirtual360.com

