

2232 Park Crescent Coquitlam, BC



THE PEARCE TEAM

Royal LePage Brookside Realty

Office: 604-466-4549

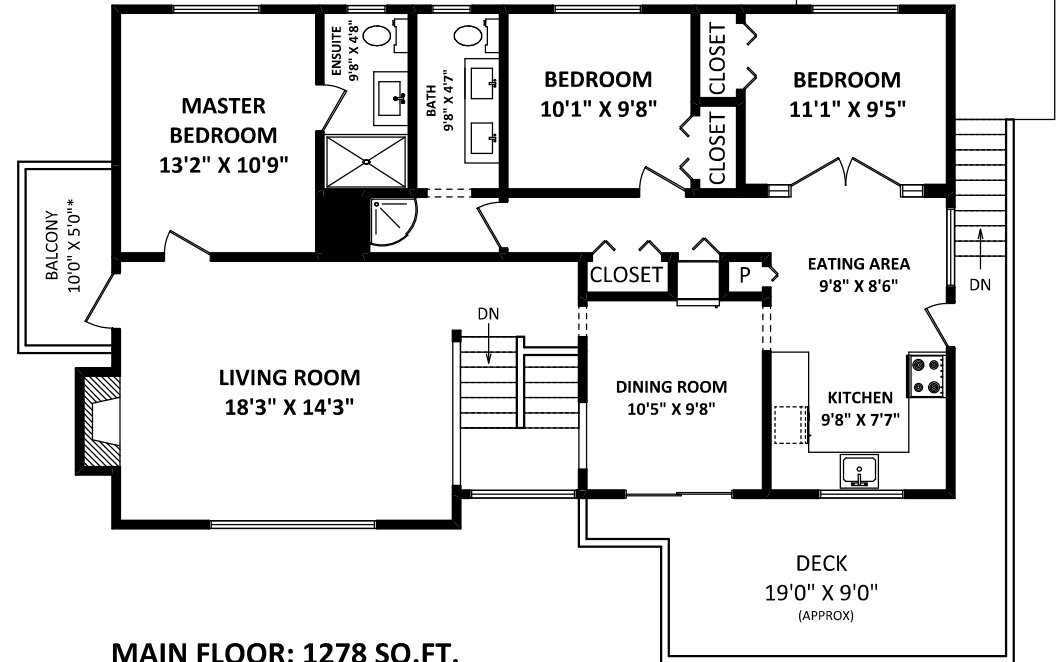
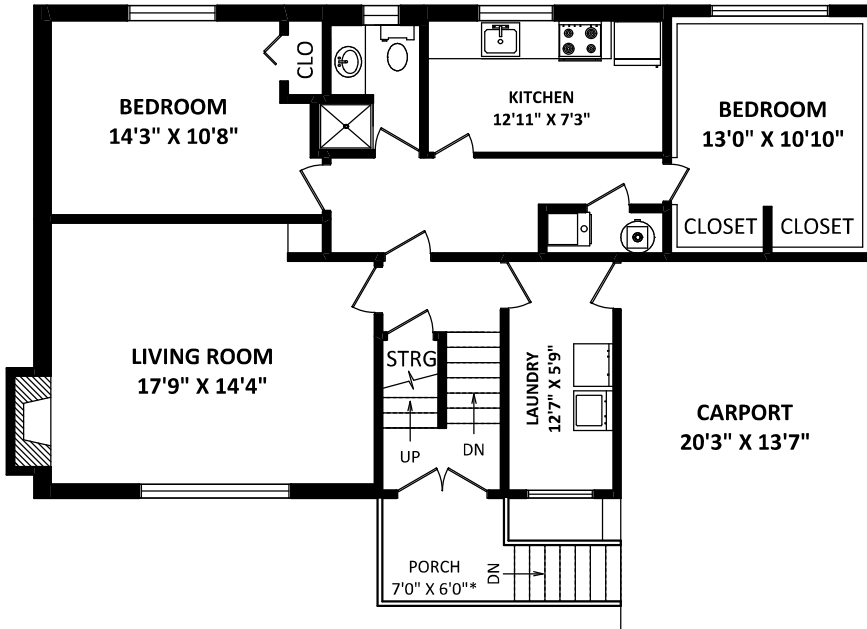
sold@thepearceteam.com

www.ThePearceTeam.com

TOTAL FINISHED AREA: 2343 SQ.FT.

OTHER AREA(S)

CARPORY:	284 SQ.FT.
DECK:	230 SQ.FT.*
PORCH:	40 SQ.FT.*
PATIO:	250 SQ.FT.*
BALCONY:	55 SQ.FT.*



[MARCH 25, 2021]



TEL: 604-575-1244

www.seevirtual360.com

DISCLAIMERS:
1. MEASUREMENTS ARE FOR PROMOTIONAL USE ONLY & ARE NOT INTENDED FOR CONSTRUCTION USE.
2. ROOM DIMENSIONS ARE APPROXIMATE. MEASUREMENTS & CALCULATIONS FOR FINISHED AREAS ARE E&O INSURED.
3. FINISHED AREAS ARE ENCLOSED AREAS IN A HOUSE THAT ARE SUITABLE FOR YEAR-ROUND USE, EMBODYING WALLS, FLOORS, AND CEILINGS THAT ARE SIMILAR TO THE REST OF THE HOUSE. (ANSI Z765-2013)
4. FOR DETACHED SINGLE-FAMILY HOUSES, THE FINISHED SQUARE FOOTAGE OF EACH LEVEL IS CALCULATED TO THE EXTERIOR FINISHED SURFACE OF THE OUTSIDE WALLS. (ANSI Z765-2013)
5. THIS FLOOR PLAN MAY ONLY BE REPRODUCED WITH PERMISSION OF THE REALTOR(S) ON THIS FLOOR PLAN.
* ANY MEASUREMENTS WITH AN ASTERISK (*) OR (APPROX) ARE APPROXIMATE AND FOR ILLUSTRATION PURPOSES ONLY AND ARE NOT E&O INSURED.

