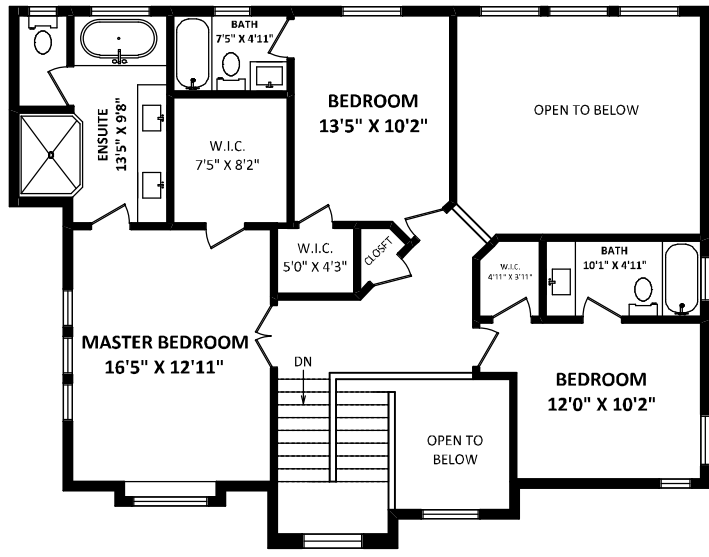
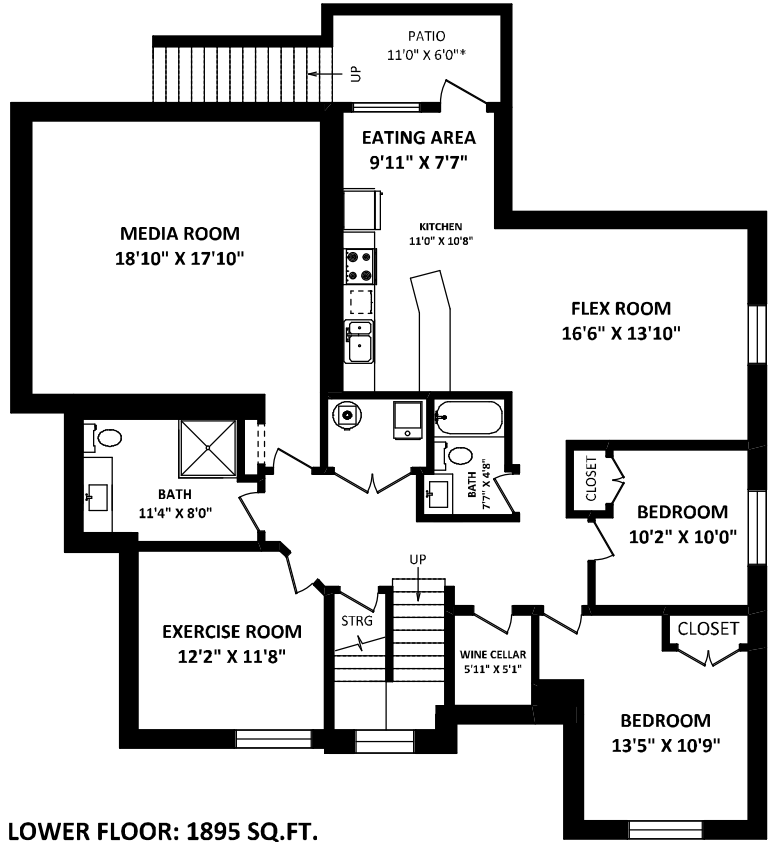


16286 28 Avenue Surrey, BC



UPPER FLOOR: 1100 SQ.FT.



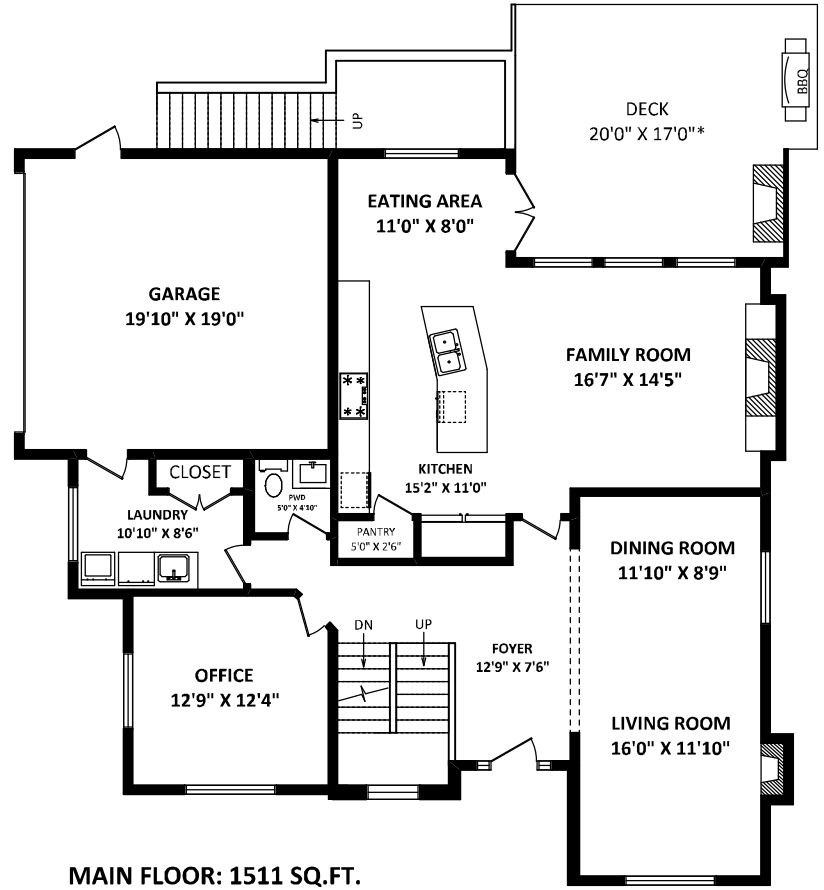
LOWER FLOOR: 1895 SQ.FT.



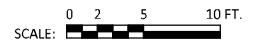
MICHELLE SCHERK
 SRS Westside Realty
 Cell: 604-838-7298
 propertieswithmichelle@gmail.com
 www.michellescherk.com

TOTAL FINISHED AREA: 4506 SQ.FT.

OTHER AREA(S)
 GARAGE: 402 SQ.FT.
 DECK: 340 SQ.FT.*
 PATIO: 66 SQ.FT.*



MAIN FLOOR: 1511 SQ.FT.



DISCLAIMERS:
 1. APPOINTMENTS ARE FOR PROMOTIONAL USE ONLY AND ARE NOT INTENDED FOR CONSTRUCTION USE.
 2. ROOM DIMENSIONS ARE APPROXIMATE. MEASUREMENTS & CALCULATIONS FOR FINISHED AREAS ARE E&O INSURED.
 3. FINISHED AREAS ARE ENCLOSED AREAS IN A HOUSE THAT ARE SUITABLE FOR YEAR-ROUND USE, FINISHING WALLS, FLOORS, AND CEILINGS THAT ARE SIMILAR TO THE REST OF THE HOUSE. (ANSI Z765-2013)
 4. FOR DETACHED SINGLE-FAMILY HOUSES, THE FINISHED SQUARE FOOTAGE OF EACH PVF1 IS CALCULATED TO THE EXTERIOR FINISHED SURFACE OF THE OUTSIDE WALLS. (ANSI Z765-2013)
 5. THIS FLOOR PLAN MAY ONLY BE REPRODUCED WITH PERMISSION OF THE REALTORS ON THIS FLOOR PLAN.
 * ANY MEASUREMENTS WITH AN ASTRISK (*) OR (APPROX) ARE APPROXIMATE AND FOR ILLUSTRATION PURPOSES ONLY AND ARE NOT E&O INSURED.

[MARCH 25, 2021]

 TEL: 604-575-1244
 www.seevirtual360.com