

12433 McNutt Road  
Maple Ridge, BC



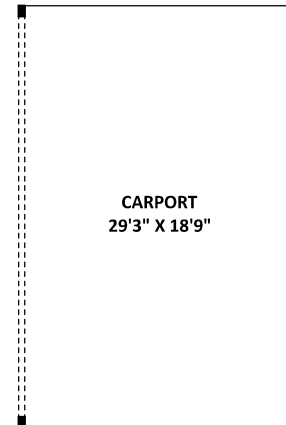
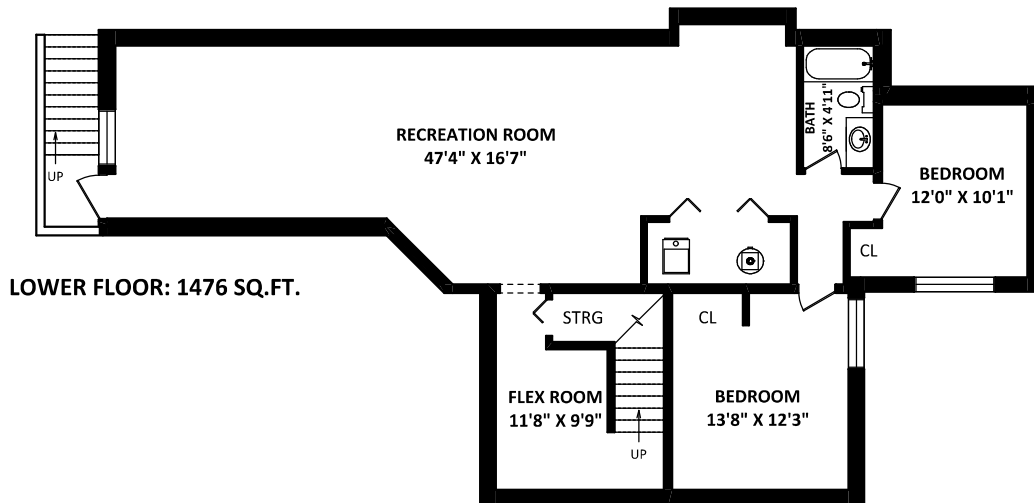
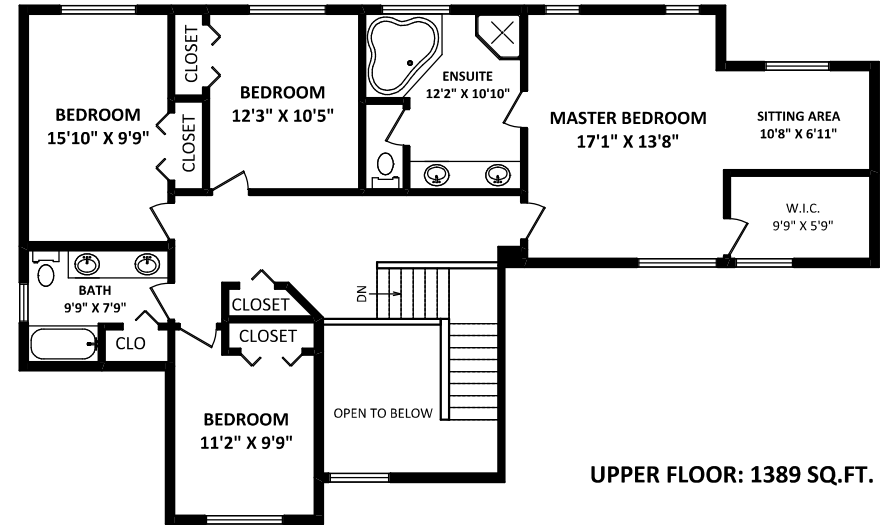
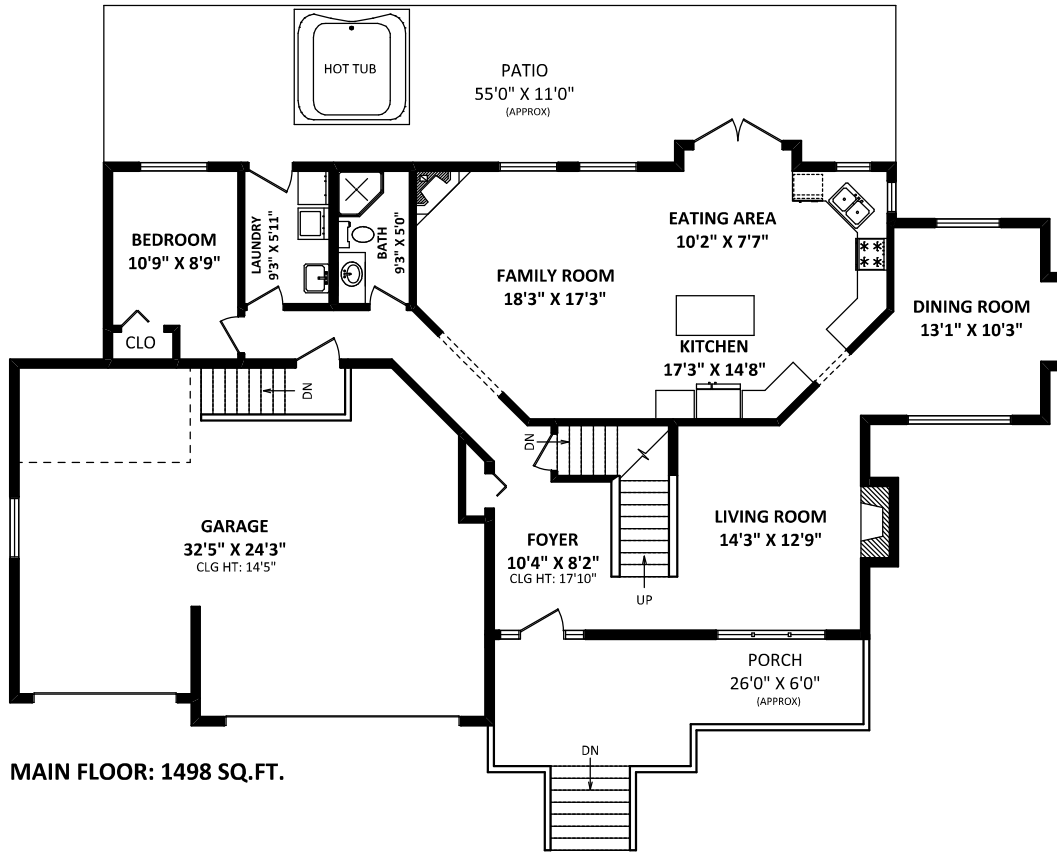
**ROB JOHNSON**

*Sutton Group 1st West Realty*

Cell: 604-880-2944

robjohnsonrealtor@gmail.com

www.robrealtor.com



**TOTAL FINISHED AREA: 4363 SQ.FT.**

*OTHER AREA(S)*

GARAGE:	776 SQ.FT.
CARPORIT:	573 SQ.FT.
PORCH:	205 SQ.FT.*
PATIO:	600 SQ.FT.*



DISCLAIMERS:  
1. MEASUREMENTS ARE FOR PROMOTIONAL USE ONLY & ARE NOT INTENDED FOR CONSTRUCTION USE.  
ROOM DIMENSIONS ARE APPROXIMATE. MEASUREMENTS & CALCULATIONS FOR FINISHED AREAS ARE E&O INSURED.  
2. FINISHED AREAS ARE ENCLOSED AREAS IN A HOUSE THAT ARE SUITABLE FOR YEAR-ROUND USE, EMBODYING WALLS, FLOORS, AND CEILINGS THAT ARE SIMILAR TO THE REST OF THE HOUSE. (ANSI Z765-2013)  
3. FOR DETACHED SINGLE-FAMILY HOMES, THE FINISHED SQUARE FOOTAGE OF EACH LEVEL IS CALCULATED TO THE EXTERIOR FINISHED SURFACE OF THE OUTSIDE WALLS. (ANSI Z765-2013)  
4. THIS FLOOR PLAN MAY ONLY BE REPRODUCED WITH PERMISSION OF THE REALTOR(S) ON THIS FLOOR PLAN.  
\* ANY MEASUREMENTS WITH AN ASTERISK (\*) OR (APPROX) ARE APPROXIMATE AND FOR ILLUSTRATION PURPOSES ONLY AND ARE NOT E&O INSURED.

[MARCH 5, 2021]



TEL: 604-575-1244  
www.seevirtual360.com