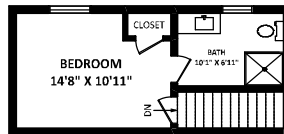




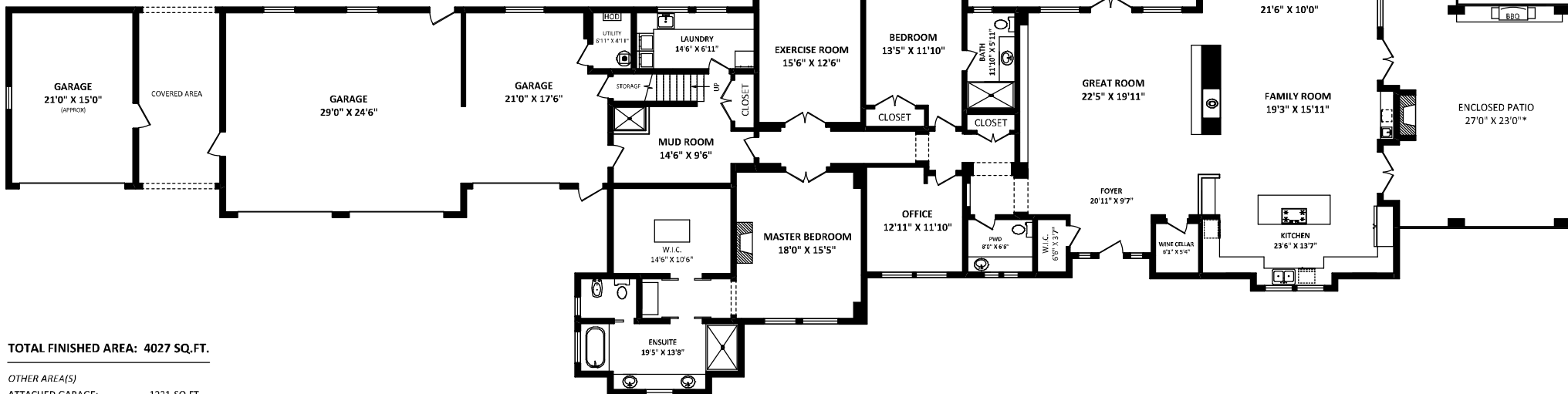
LEO RONSE

Royal LePage - Wolstencroft Realty
Office: 604-790-0231
leo@cantplaygolf.ca
cantplaygolf.ca

1194 216th Street Langley, BC



UPPER FLOOR: 327 SQ.FT.



MAIN FLOOR: 3700 SQ.FT.

TOTAL FINISHED AREA: 4027 SQ.FT.

<i>OTHER AREA(S)</i>	
ATTACHED GARAGE:	1221 SQ.FT.
DETACHED GARAGE:	363 SQ.FT.*
ENCLOSED PATIO:	668 SQ.FT.*
PATIO:	863 SQ.FT.*

1. DIMENSIONS: TO FACE UNLESS OTHERWISE NOTED.
 2. DIMENSIONS TO FACE UNLESS OTHERWISE NOTED.
 3. DIMENSIONS TO FACE UNLESS OTHERWISE NOTED.
 4. DIMENSIONS TO FACE UNLESS OTHERWISE NOTED.
 5. DIMENSIONS TO FACE UNLESS OTHERWISE NOTED.
 6. DIMENSIONS TO FACE UNLESS OTHERWISE NOTED.
 7. DIMENSIONS TO FACE UNLESS OTHERWISE NOTED.
 8. DIMENSIONS TO FACE UNLESS OTHERWISE NOTED.
 9. DIMENSIONS TO FACE UNLESS OTHERWISE NOTED.
 10. DIMENSIONS TO FACE UNLESS OTHERWISE NOTED.

