

**23621 114A Avenue  
Maple Ridge, BC**



**ROB JOHNSON**

**Sutton Group 1st West Realty**

Cell: 604-880-2944

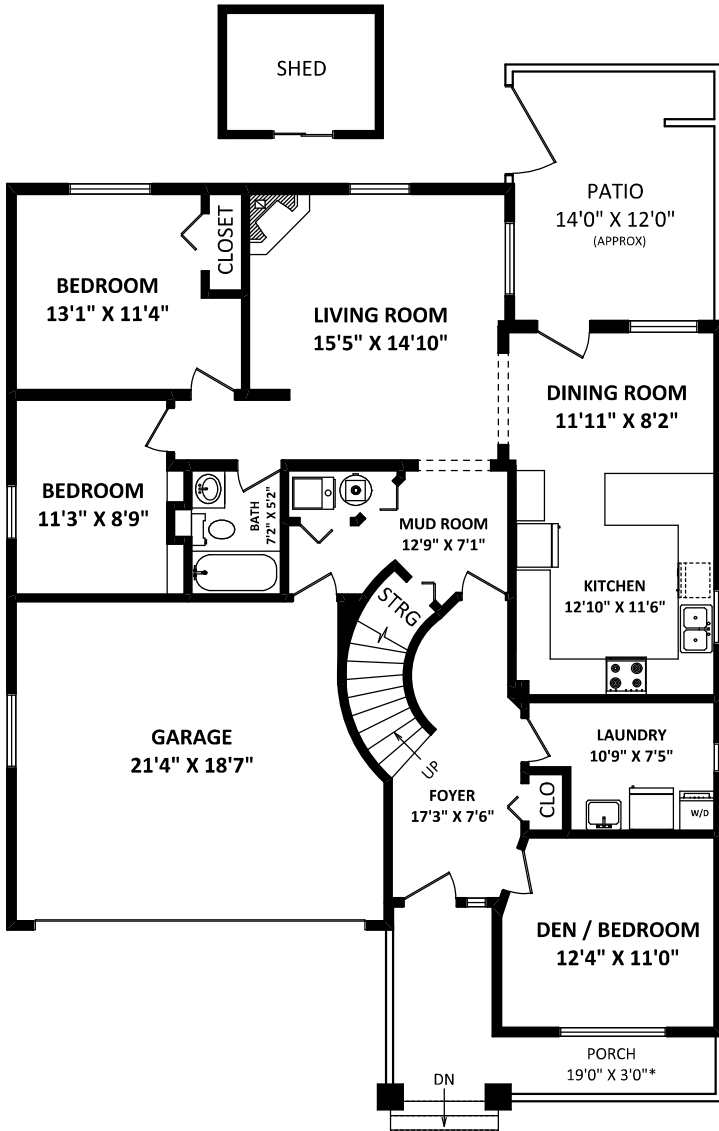
robjohnsonrealtor@gmail.com

www.robrealtor.com

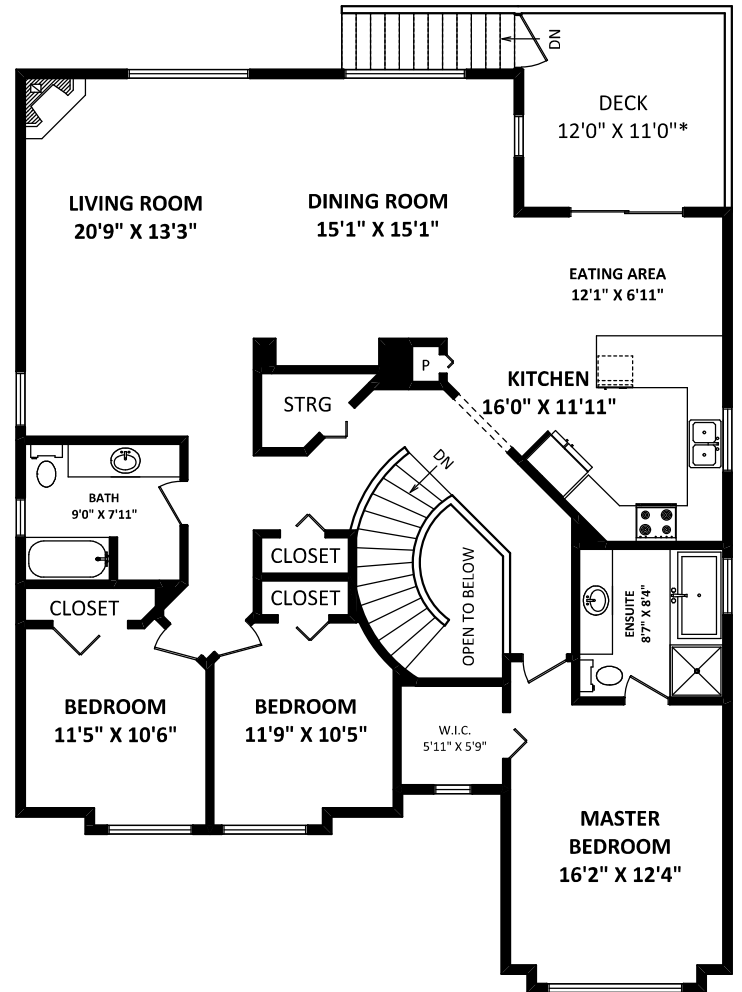
**TOTAL FINISHED AREA: 3169 SQ.FT.**

**OTHER AREA(S)**

GARAGE:	393 SQ.FT.
DECK:	140 SQ.FT.*
PATIO:	180 SQ.FT.*
PORCH:	120 SQ.FT.*
SHED:	70 SQ.FT.*



**LOWER FLOOR: 1374 SQ.FT.**



**MAIN FLOOR: 1793 SQ.FT.**

DISCLAIMERS:  
 1. MEASUREMENTS ARE FOR PROMOTIONAL USE ONLY & ARE NOT INTENDED FOR CONSTRUCTION USE.  
 ROOM DIMENSIONS ARE APPROXIMATE. MEASUREMENTS & CALCULATIONS FOR FINISHED AREAS ARE E&O INSURED.  
 2. FINISHED AREAS ARE ENCLOSED AREAS IN A HOUSE THAT ARE SUITABLE FOR YEAR-ROUND USE, EMBODYING WALLS, FLOORS, AND CEILINGS THAT ARE SIMILAR TO THE REST OF THE HOUSE. (ANSI Z765-2013)  
 3. FOR DETACHED SINGLE-FAMILY HOUSES, THE FINISHED SQUARE FOOTAGE OF EACH LEVEL IS CALCULATED TO THE EXTERIOR FINISHED SURFACE OF THE OUTSIDE WALLS. (ANSI Z765-2013)  
 4. THIS FLOOR PLAN MAY ONLY BE REPRODUCED WITH PERMISSION OF THE REALTOR(S) ON THIS FLOOR PLAN.  
 \* ANY MEASUREMENTS WITH AN ASTERISK (\*) OR (APPROX) ARE APPROXIMATE AND FOR ILLUSTRATION PURPOSES ONLY AND ARE NOT E&O INSURED.

[FEBRUARY 23, 2021]  
**SEEVIRTUAL**  
 REALTY & PHOTOGRAPHY  
 TEL: 604-575-1244  
 www.seevirtual360.com

