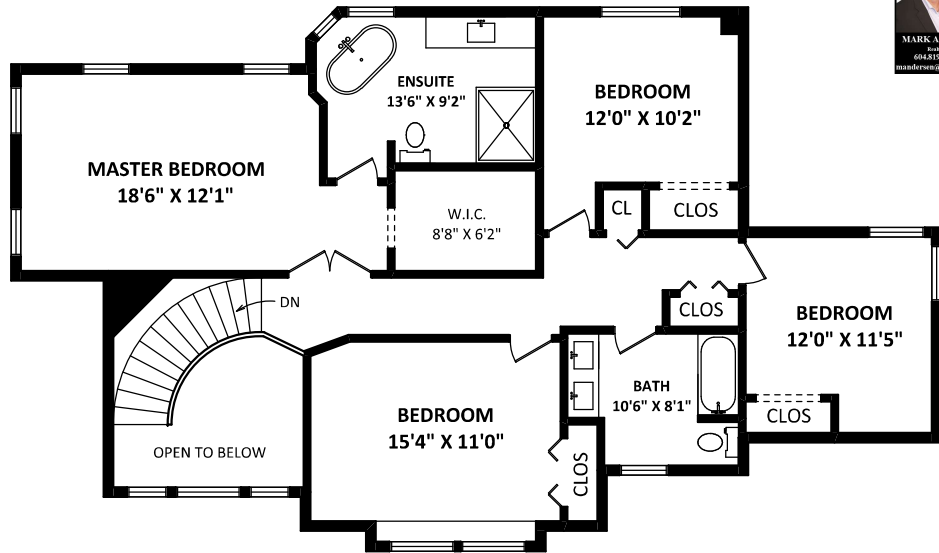
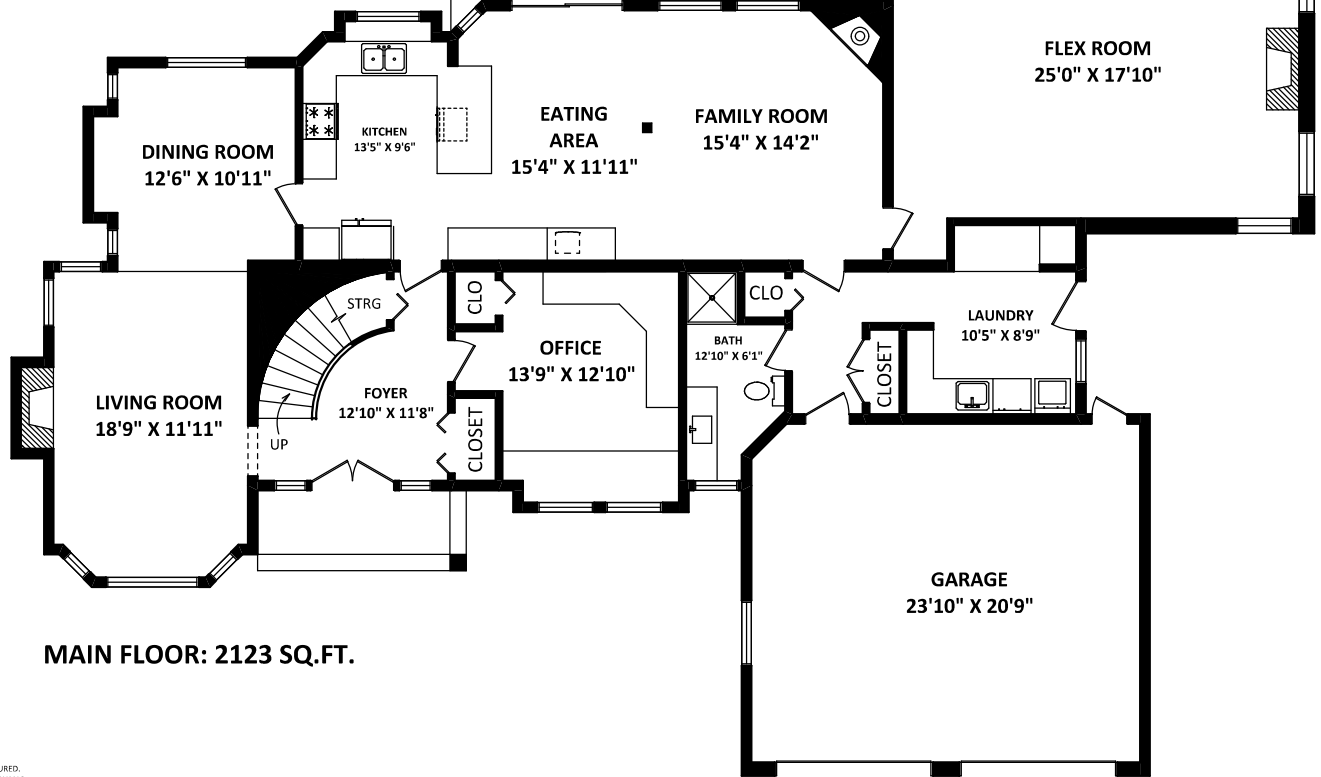
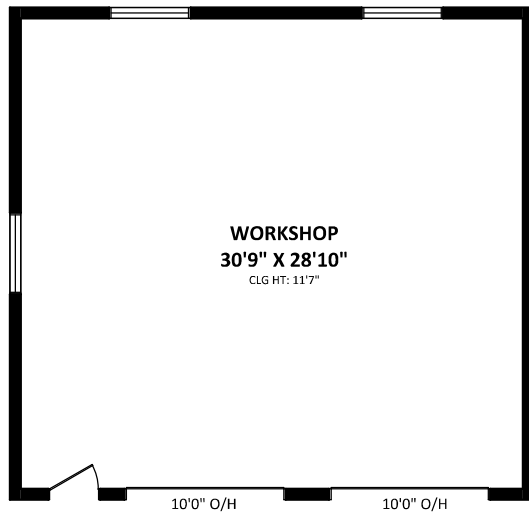




49294 Chilliwack Central Road
Chilliwack, BC



UPPER FLOOR: 1308 SQ.FT.



MAIN FLOOR: 2123 SQ.FT.

TOTAL FINISHED AREA: 3431 SQ.FT.

OTHER AREA(S)	
GARAGE:	537 SQ.FT.
WORKSHOP:	968 SQ.FT.
PATIO:	676 SQ.FT.*

