

**8522 Howard Crescent
Chilliwack, BC**

**8522 Howard Crescent
Chilliwack, BC**

TOTAL FINISHED AREA: 933 SQ.FT.*

OTHER AREA(S)

COVERED AREA: 143 SQ.FT.*

SHED: 132 SQ.FT.*

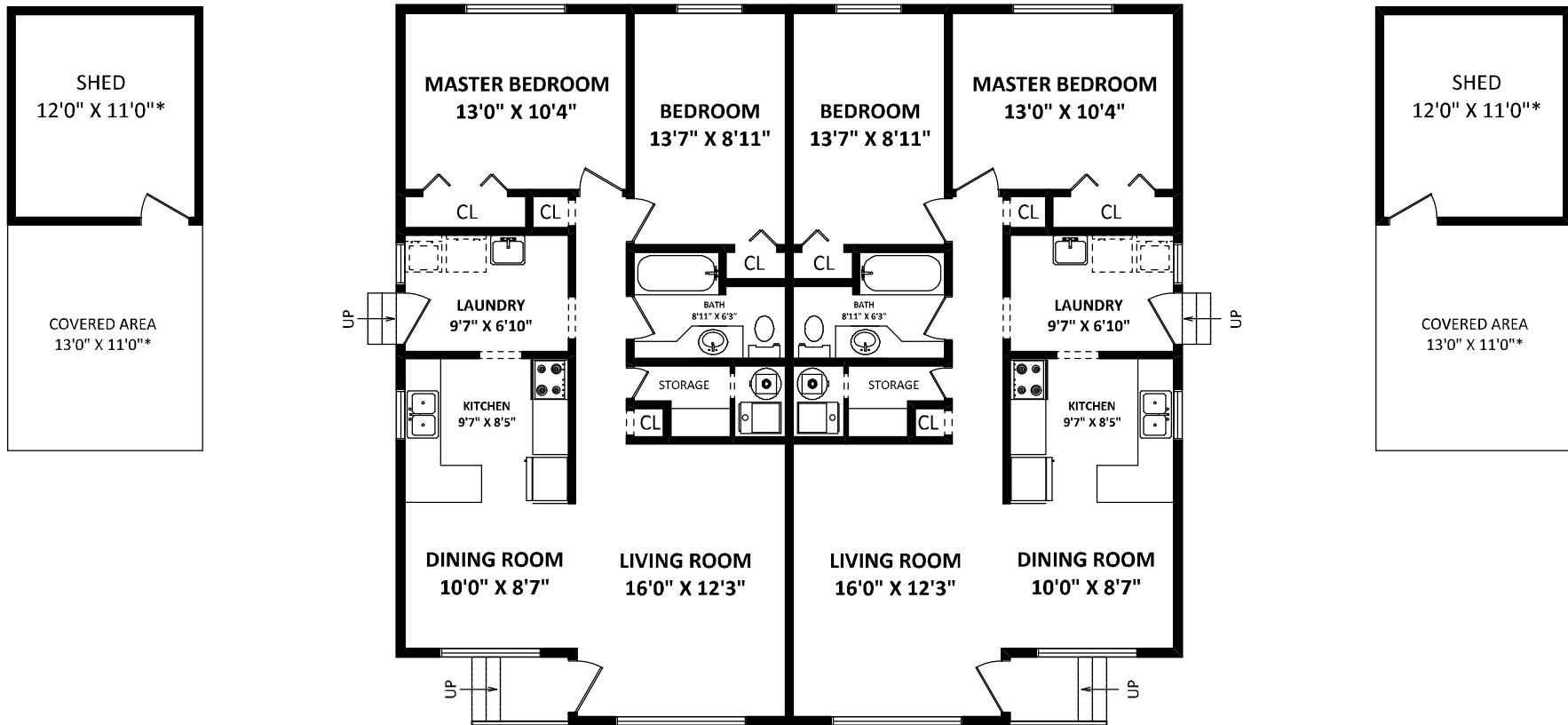
Home Masters Team
Uncertified Specialists *Uncertified Assistant*
MARK Andersen 604 819 1422 markandersen@remax.net
JANETTE Joiner 604 819 6564 janettejoiner@remax.net
HomeMastersTeam.com
 RE/MAX Nyda Realty 1-7300 Vedder Road | Chilliwack | 1 604 850 7179
 Children's Miracle Network Hospital

TOTAL FINISHED AREA: 933 SQ.FT.

OTHER AREA(S)

COVERED AREA: 143 SQ.FT.*

SHED: 132 SQ.FT.*



DISCLAIMERS:

1. MEASUREMENTS ARE FOR PROMOTIONAL USE ONLY & ARE NOT INTENDED FOR CONSTRUCTION USE. ROOM DIMENSIONS ARE APPROXIMATE. MEASUREMENTS & CALCULATIONS FOR FINISHED AREAS OF 8522 HOWARD CRES ARE E80 INSURED. SQFT AND ROOM DIMENSIONS ARE APPROXIMATE OF 8522 HOWARD CRES TO BE CONFIRMED ON SITE.
 2. FINISHED AREAS ARE ENCLOSED AREAS IN A HOUSE THAT ARE SUITABLE FOR YEAR-ROUND USE, EMBODYING WALLS, FLOORS, AND CEILINGS THAT ARE SIMILAR TO THE REST OF THE HOUSE. (ANSI 2765-2013)
 3. FOR ATTACHED SINGLE-FAMILY HOUSES, THE FINISHED SQUARE FOOTAGE OF EACH LEVEL IS CALCULATED TO THE EXTERIOR FINISHED SURFACE OF THE OUTSIDE WALL OR FROM THE CENTERLINES BETWEEN HOUSES. (ANSI 2765-2013)
 4. THIS FLOOR PLAN MAY ONLY BE REPRODUCED WITH PERMISSION OF THE REALTOR(S) ON THIS FLOOR PLAN.
- * ANY MEASUREMENTS WITH AN ASTERISK (*) OR (APPROX) ARE APPROXIMATE AND FOR ILLUSTRATION PURPOSES ONLY AND ARE NOT E80 INSURED.

[JANUARY 25, 2021]

 TEL: 604-575-1244
 www.seevirtual360.com

NORTH
 SCALE: 0 2 5 10 FT.