

#7 11540 Glacier Estate Mission, BC



GARY FRAIPONT & LORRAINE MANYK

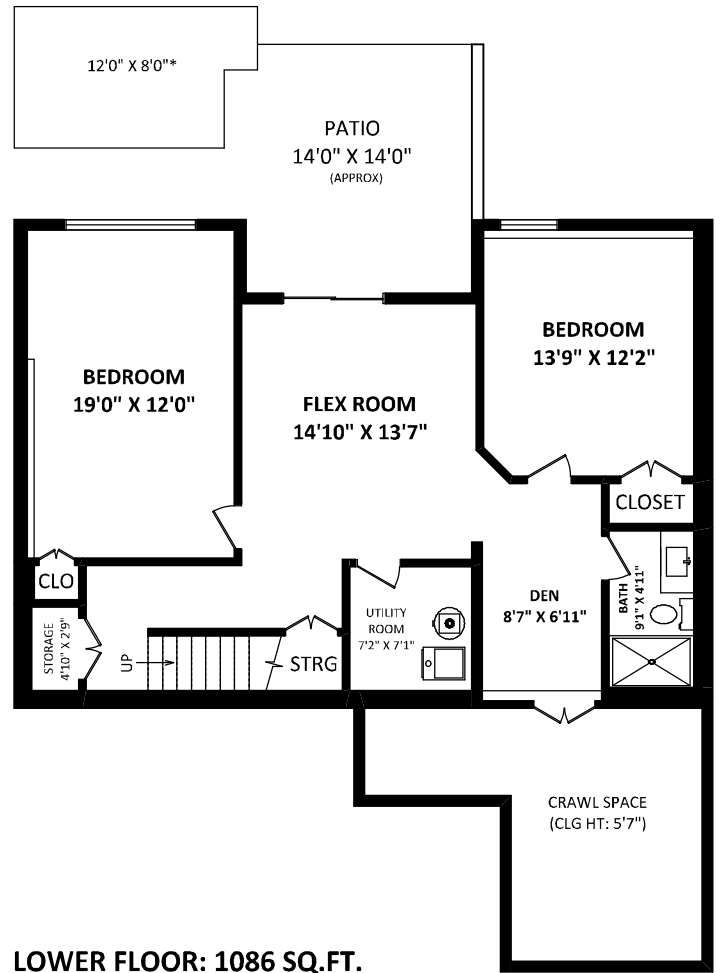
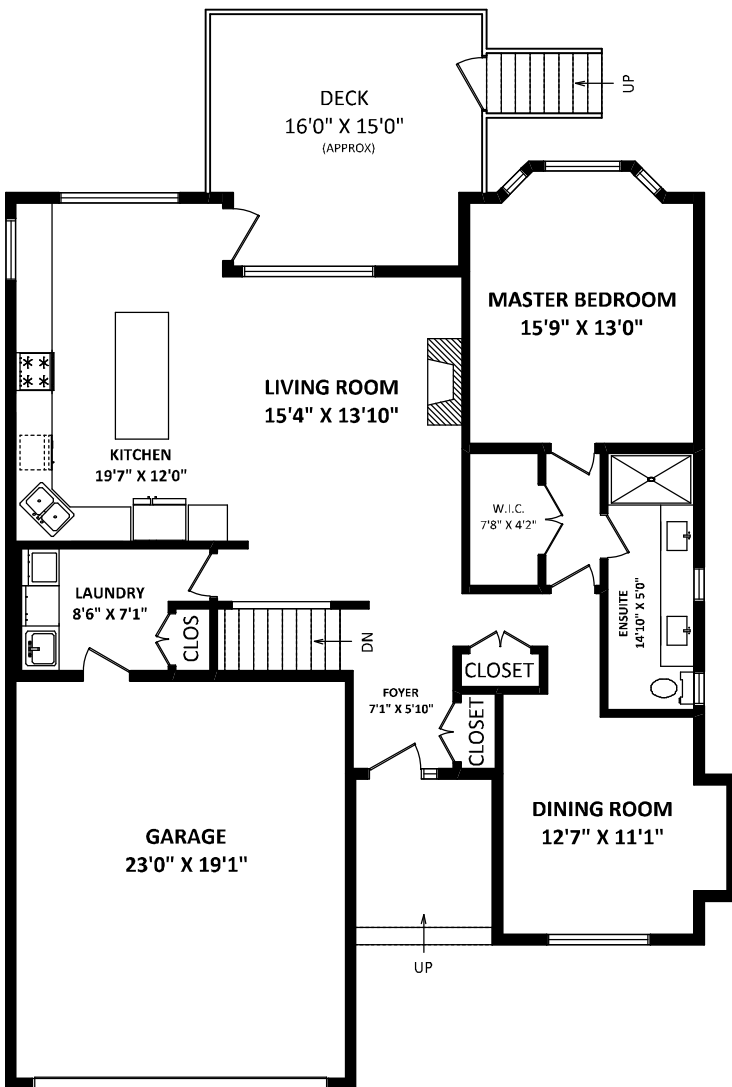
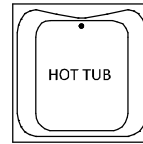
RE/MAX LifeStyles Realty
Maple Ridge

Cell: 604-828-8634
Office: 604-466-2838
lorraine@rltylink.com

TOTAL FINISHED AREA: 2436 SQ.FT.

OTHER AREA(S)

GARAGE:	474 SQ.FT.
DECK:	220 SQ.FT.*
PATIO:	200 SQ.FT.*



MAIN FLOOR: 1350 SQ.FT.



DISCLAIMERS:
 1. MEASUREMENTS ARE FOR PROMOTIONAL USE ONLY & ARE NOT INTENDED FOR CONSTRUCTION USE.
 2. ROOM DIMENSIONS ARE APPROXIMATE. MEASUREMENTS & CALCULATIONS FOR FINISHED AREAS ARE E&O INSURED.
 3. FINISHED AREAS ARE ENCLOSED AREAS IN A HOUSE THAT ARE SUITABLE FOR YEAR-ROUND USE, EMBODYING WALLS, FLOORS, AND CEILINGS THAT ARE SIMILAR TO THE REST OF THE HOUSE. (ANSI Z265-2013)
 4. FOR BARE LAND STRATA, SQUARE FOOTAGE OF EACH LEVEL IS CALCULATED TO THE EXTERIOR FINISHED SURFACE OF THE OUTSIDE WALLS.
 5. THIS FLOOR PLAN MAY ONLY BE REPRODUCED WITH PERMISSION OF THE REALTOR(S) ON THIS FLOOR PLAN.
 * ANY MEASUREMENTS WITH AN ASTERISK (*) OR (APPROX) ARE APPROXIMATE AND FOR ILLUSTRATION PURPOSES ONLY AND ARE NOT E&O INSURED.

[OCTOBER 27, 2020]



TEL: 604-575-1244
www.seevirtual360.com