

354 198 Street, Langley, B.C.

Main Floor: 2,779 sq.ft.
Upper Floor: 1,120 sq.ft.
Lower Floor: 2,878 sq.ft.

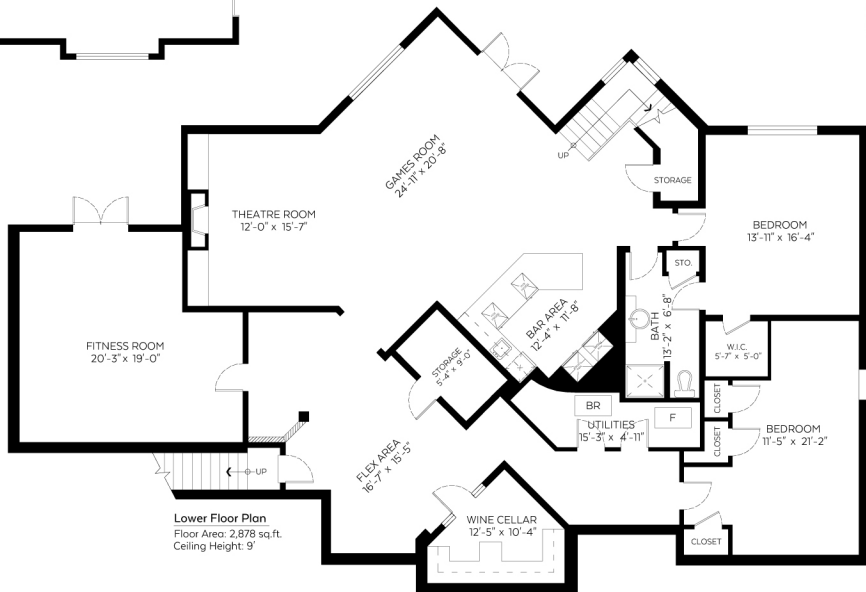
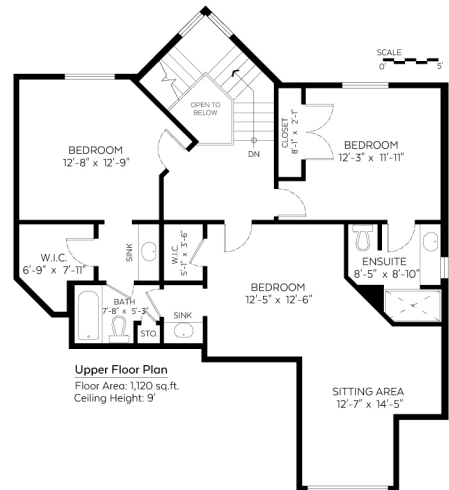
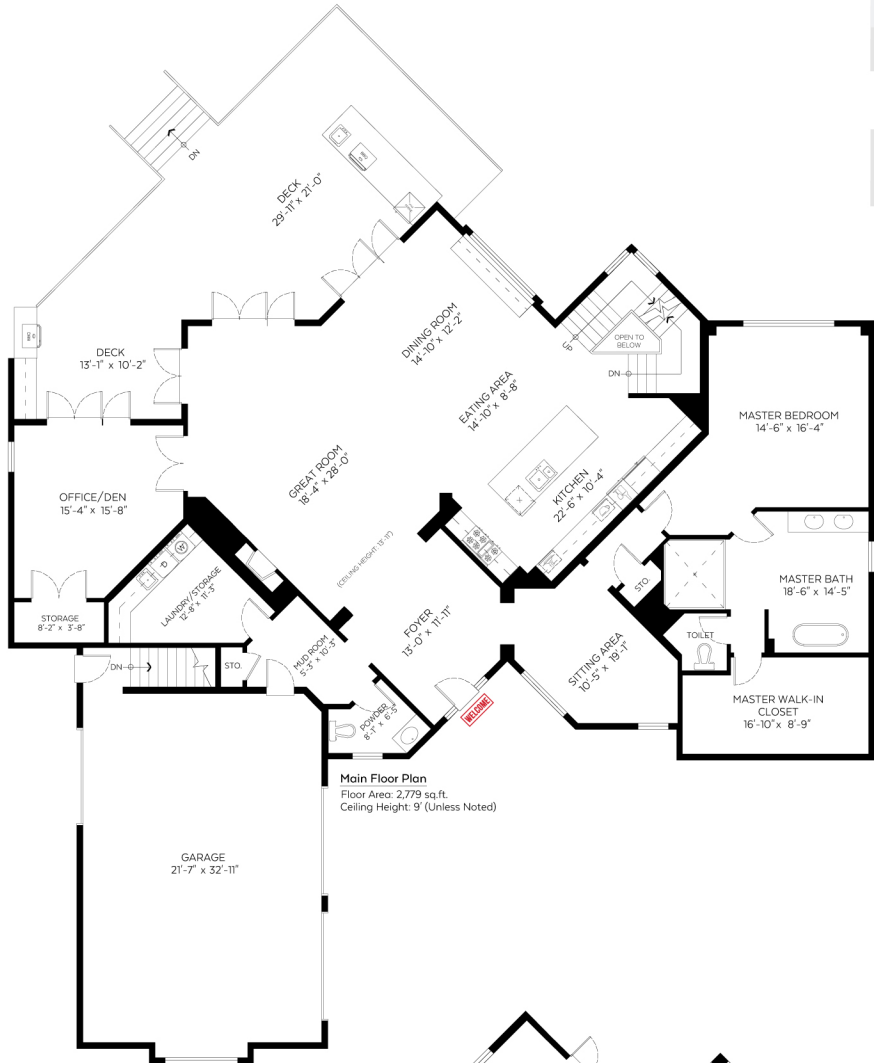
Total: 6,777 sq.ft.

Open To Below: 35 sq.ft.

Auxiliary Area

Garage: 789 sq.ft.

Deck: 723 sq.ft.



Measured on: June 10, 2019

*SQFT is calculated from Exterior wall to Exterior Wall.

The floor plan is not suitable for architectural/construction and is covered under E&O. © Excelsior Measuring Inc. 2019. All rights reserved for Excelsior Measuring Inc. Users shall not publish and distribute such material (in whole or in part) and/or incorporate it in other works in any form.

