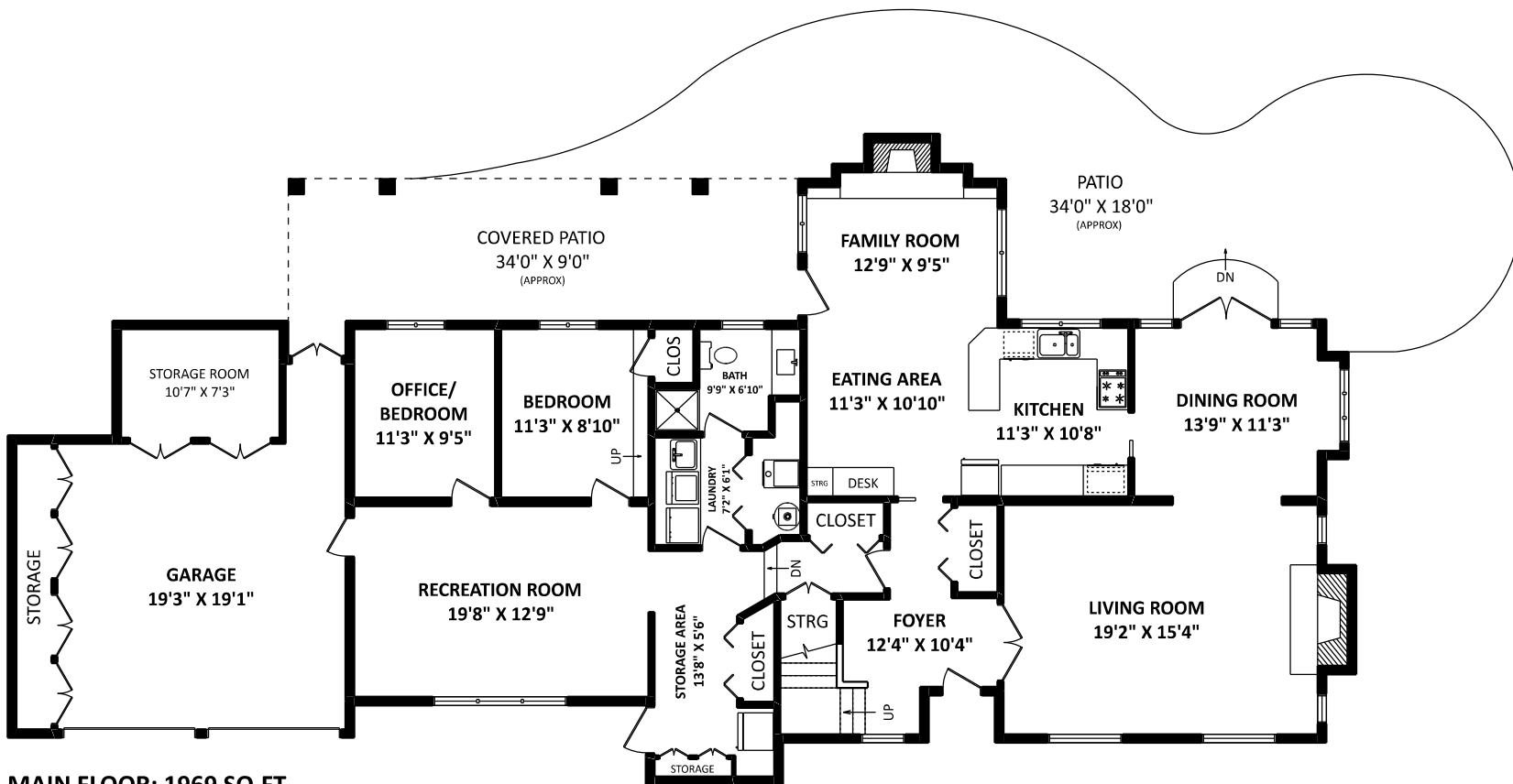


4619 Caulfeild Drive  
West Vancouver, BC



MAIN FLOOR: 1969 SQ.FT.



**KIM TAYLOR**

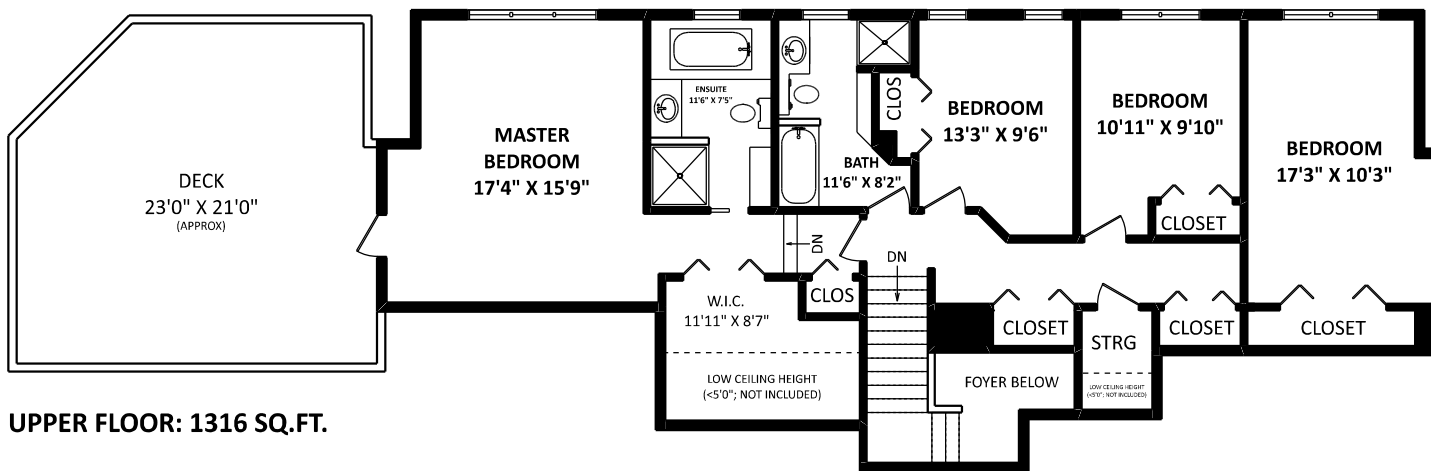
Royal LePage Sussex

Cell: 604-315-2645

Office: 604-925-2911

kim@kimtaylorhomes.com

www.kimtaylorhomes.com



UPPER FLOOR: 1316 SQ.FT.

**TOTAL FINISHED AREA: 3285 SQ.FT.**

OTHER AREA(S)

|                |             |
|----------------|-------------|
| GARAGE:        | 569 SQ.FT.  |
| DECK:          | 465 SQ.FT.* |
| PATIO:         | 527 SQ.FT.* |
| COVERED PATIO: | 333 SQ.FT.* |

\*\*EXCLUDES 77 SQ.FT. OF LOW CEILING AREA(S), BOUND BY DOTTED LINES.

[SEPTEMBER 29, 2020]



TEL: 604-575-1244  
www.seevirtual360.com

DISCLAIMERS:  
1. MEASUREMENTS ARE FOR PROMOTIONAL USE ONLY & ARE NOT INTENDED FOR CONSTRUCTION USE. ROOM DIMENSIONS ARE APPROXIMATE. MEASUREMENTS & CALCULATIONS FOR FINISHED AREAS ARE E&O INSURED.  
2. FINISHED AREAS ARE ENCLOSED AREAS IN A HOUSE THAT ARE SUITABLE FOR YEAR-ROUND USE, EMBODYING WALLS, FLOORS, AND CEILINGS THAT ARE SIMILAR TO THE REST OF THE HOUSE. (ANSI Z765-2013)  
3. FOR DETACHED SINGLE-FAMILY HOUSES, THE FINISHED SQUARE FOOTAGE OF EACH LEVEL IS CALCULATED TO THE EXTERIOR FINISHED SURFACE OF THE OUTSIDE WALLS. (ANSI Z765-2013)  
4. THIS FLOOR PLAN MAY ONLY BE REPRODUCED WITH PERMISSION OF THE REALTOR(S) ON THIS FLOOR PLAN. \* ANY MEASUREMENTS WITH AN ASTERISK (\*) OR (APPROX) ARE APPROXIMATE AND FOR ILLUSTRATION PURPOSES ONLY AND ARE NOT E&O INSURED.

