

4377 W 12th Avenue Vancouver, BC

GREGORY HEYES
PERSONAL REAL ESTATE CORPORATION

Personal Real Estate Corporation

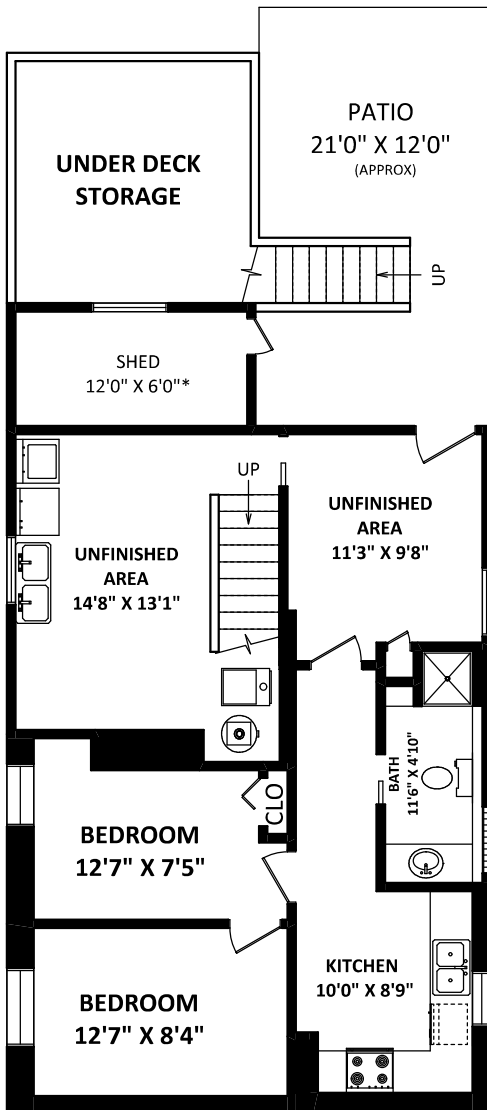
RE/MAX Crest Realty
North Vancouver
Cell: 604-720-8107
Office: 604-988-8000
greg@gregheyes.com
www.gregheyes.com



TOTAL FLOOR AREA: 1912 SQ.FT.*
TOTAL FINISHED AREA(S): 1585 SQ.FT.
UNFINISHED AREA(S): 327 SQ.FT.

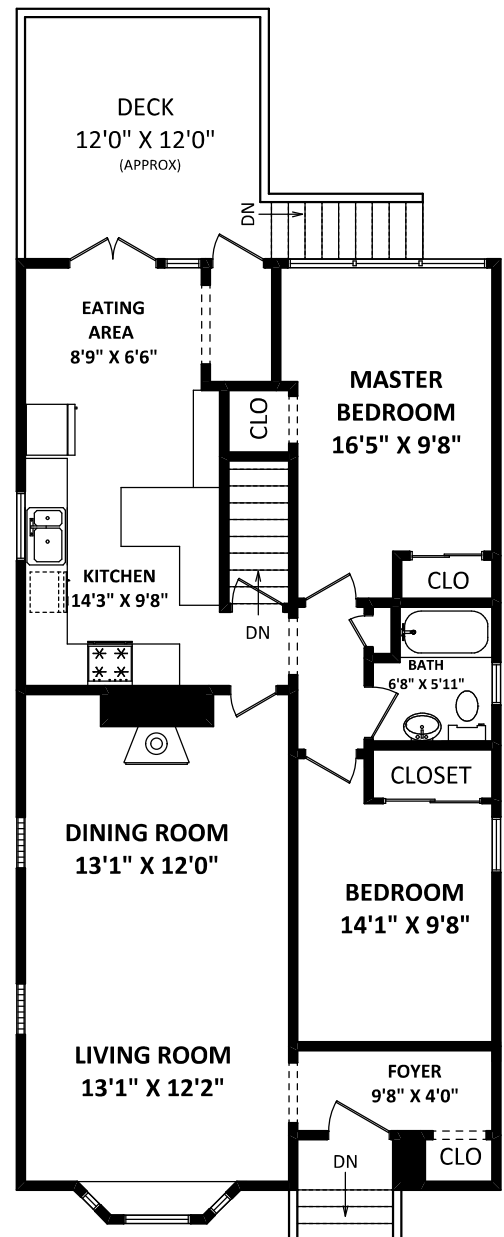
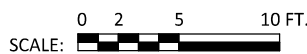
OTHER AREA(S)

GARAGE: 242 SQ.FT.
DECK: 155 SQ.FT.*
PATIO: 240 SQ.FT.*
UNDER DECK STORAGE: 155 SQ.FT.*
SHED: 75 SQ.FT.*



LOWER FLOOR:

FINISHED AREA: 489 SQ.FT.
UNFINISHED AREA(S): 327 SQ.FT.



MAIN FLOOR: 1096 SQ.FT.



[SEPTEMBER 18, 2020]



TEL: 604-575-1244
www.seevirtual360.com

DISCLAIMERS:
1. MEASUREMENTS ARE FOR PROMOTIONAL USE ONLY & ARE NOT INTENDED FOR CONSTRUCTION USE.
ROOM DIMENSIONS ARE APPROXIMATE. MEASUREMENTS & CALCULATIONS FOR FINISHED AREAS ARE E&O INSURED.
2. FINISHED AREAS ARE ENCLOSED AREAS IN A HOUSE THAT ARE SUITABLE FOR YEAR-ROUND USE, EMBODYING WALLS, FLOORS, AND CEILINGS THAT ARE SIMILAR TO THE REST OF THE HOUSE. (ANSI Z765-2013)
3. FOR DETACHED SINGLE-FAMILY HOUSES, THE FINISHED SQUARE FOOTAGE OF EACH LEVEL IS CALCULATED TO THE EXTERIOR FINISHED SURFACE OF THE OUTSIDE WALLS. (ANSI Z765-2013)
4. THIS FLOOR PLAN MAY ONLY BE REPRODUCED WITH PERMISSION OF THE REALTOR(S) ON THIS FLOOR PLAN.
* ANY MEASUREMENTS WITH AN ASTERISK (*) OR (APPROX) ARE APPROXIMATE AND FOR ILLUSTRATION PURPOSES ONLY AND ARE NOT E&O INSURED.