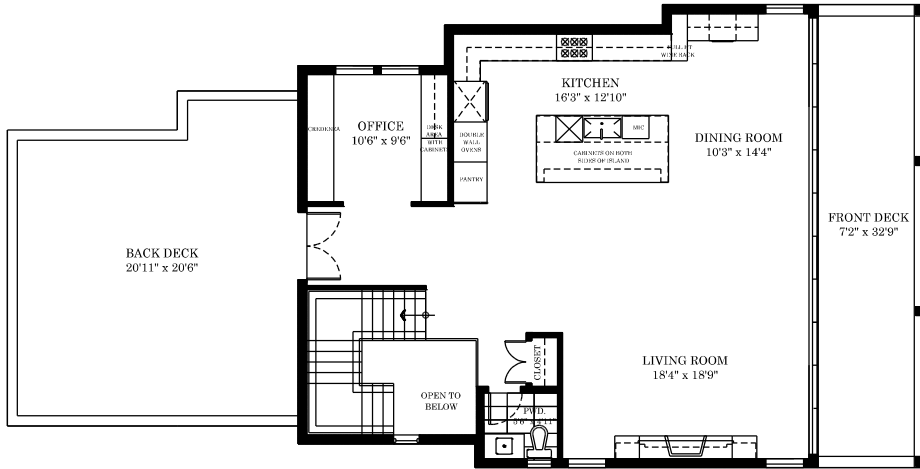
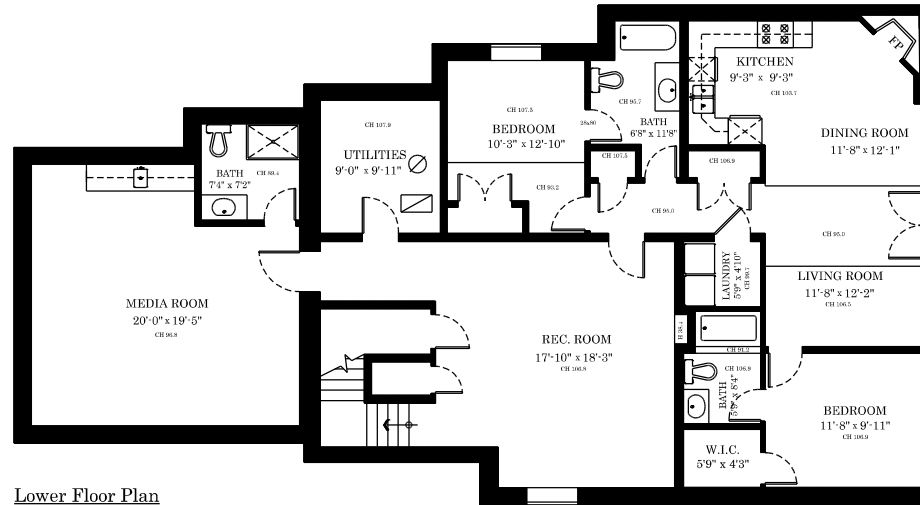


932 Ash Street White Rock, BC



**Second Floor Plan**  
Floor Area: 1235 sq.ft.



**Lower Floor Plan**  
Floor Area: 2104 sq.ft.  
Ceiling Height: 8'-11"

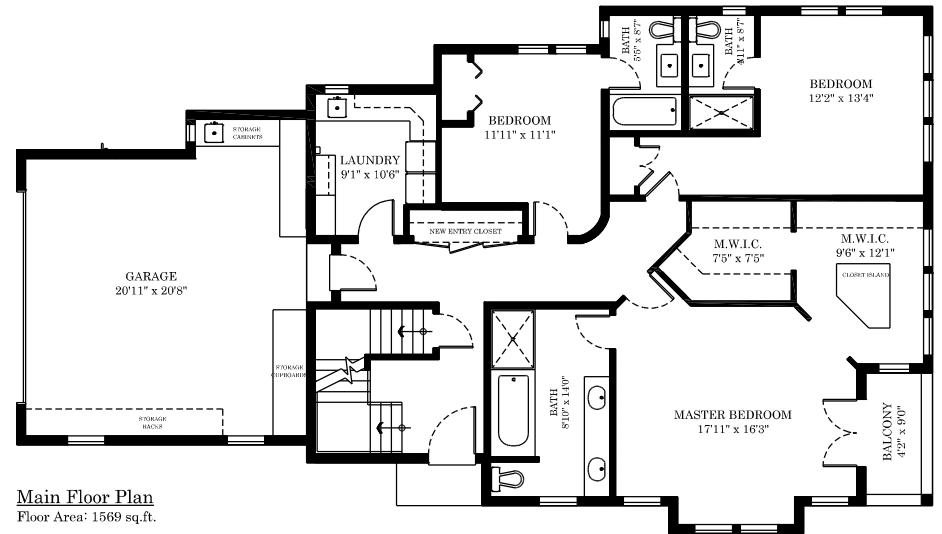
**TOTAL FINISHED AREA: 4908 SQ.FT.**

**OTHER AREA(S)**  
GARAGE: 500 SQ.FT.  
DECKS: 778 SQ.FT.  
BALCONY: 49 SQ.FT.

**KAREN CONYERS**  
Personal Real Estate Corporation

**WINSTON CONYERS**

Sotheby's International Realty Canada  
Cell: 604-240-3377  
kconyers@sothebysrealty.ca  
karenconyers.ca



**Main Floor Plan**  
Floor Area: 1569 sq.ft.

SCALE: 0 2 5 10 FT.

DISCLAIMERS:  
1. MEASUREMENTS ARE FOR PROMOTIONAL USE ONLY & ARE NOT INTENDED FOR CONSTRUCTION USE.  
ROOM DIMENSIONS ARE APPROXIMATE.  
2. THIS FLOOR PLAN IS DERIVED FROM A SECTION, BLUE PRINTS, OR CONSTRUCTION DRAWINGS.  
3. THIS FLOOR PLAN MAY ONLY BE REPRODUCED WITH PERMISSION OF THE REALTOR(S) ON THIS FLOOR PLAN.  
NOTE:  
1. ALL MEASUREMENTS TO BE CONFIRMED ON SITE, & DESIGNER MUST BE NOTIFIED OF ANY ERRORS OR OMISSIONS

[SEPTEMBER 8, 2020]  
**SEEVIRTUAL**  
INTERNATIONAL REALTY  
TEL: 604-575-1244  
www.seevirtual360.com