



KIM & SEAN WHITTALL

RE/MAX MASTERS REALTY

Sean: 604.880.9400

Kim: 604.720.3659

Office: 604.913.9000

WhittallRealEstate@gmail.com

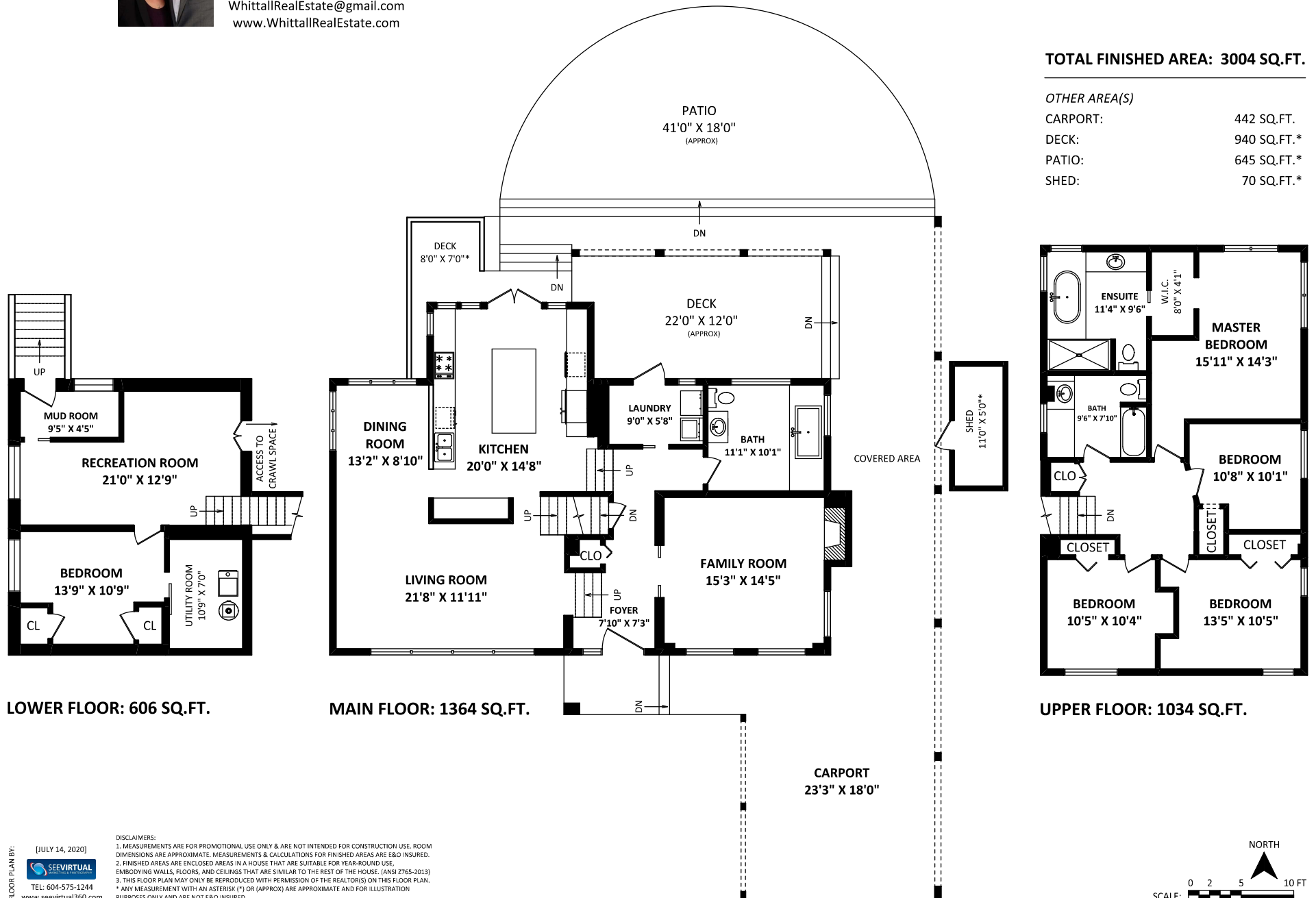
www.WhittallRealEstate.com

21677 River Road,
Maple Ridge, BC

TOTAL FINISHED AREA: 3004 SQ.FT.

OTHER AREA(S)

CARPORT:	442 SQ.FT.
DECK:	940 SQ.FT.*
PATIO:	645 SQ.FT.*
SHED:	70 SQ.FT.*



FLOOR PLAN BY:
[JULY 14, 2020]
SEE VIRTUAL
TEL: 604-575-1244
www.seevirtual360.com

DISCLAIMERS:
1. MEASUREMENTS ARE FOR PROMOTIONAL USE ONLY & ARE NOT INTENDED FOR CONSTRUCTION USE. ROOM DIMENSIONS ARE APPROXIMATE. MEASUREMENTS & CALCULATIONS FOR FINISHED AREAS ARE E&O INSURED.
2. FINISHED AREAS ARE ENCLOSED AREAS IN A HOUSE THAT ARE SUITABLE FOR YEAR-ROUND USE, EMBODYING WALLS, FLOORS, AND CEILINGS THAT ARE SIMILAR TO THE REST OF THE HOUSE. (ANSI Z765-2013)
3. THIS FLOOR PLAN MAY ONLY BE REPRODUCED WITH PERMISSION OF THE REALTOR(S) ON THIS FLOOR PLAN.
* ANY MEASUREMENT WITH AN ASTERISK (*) OR (APPROX) ARE APPROXIMATE AND FOR ILLUSTRATION PURPOSES ONLY AND ARE NOT E&O INSURED.

