



KAREN CONYERS

Personal Real Estate Corporation

WINSTON CONYERS

Sotheby's International Realty Canada

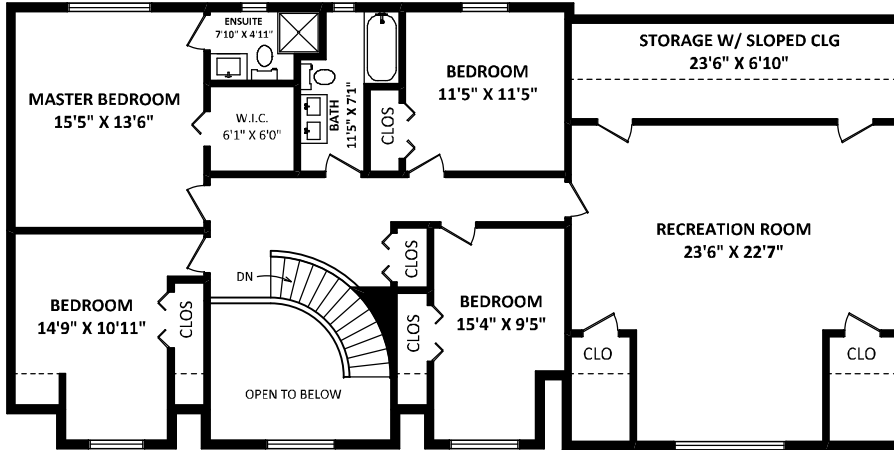
Cell: 604-240-3377

kconyers@sothebysrealty.ca

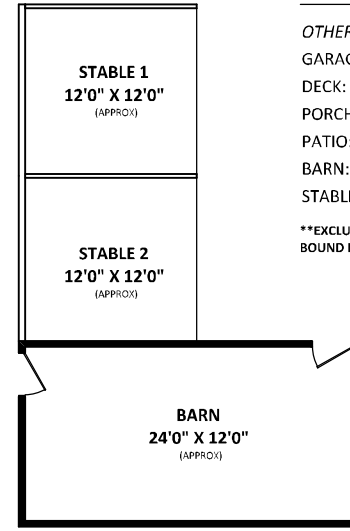
www.karenconyers.com

21113 16 Avenue,
Langley, BC

TOTAL FINISHED AREA: 4543 SQ.FT.**



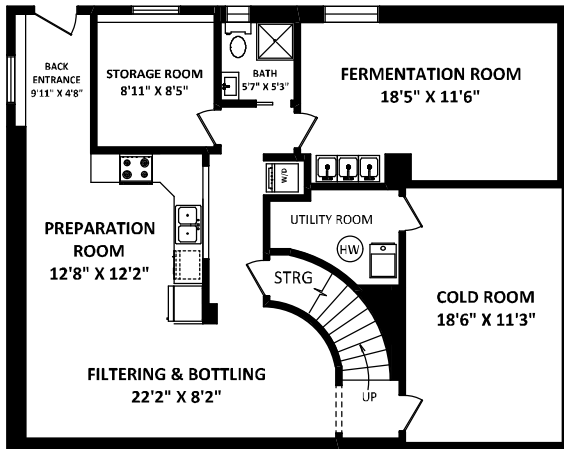
UPPER FLOOR: 1688 SQ.FT.



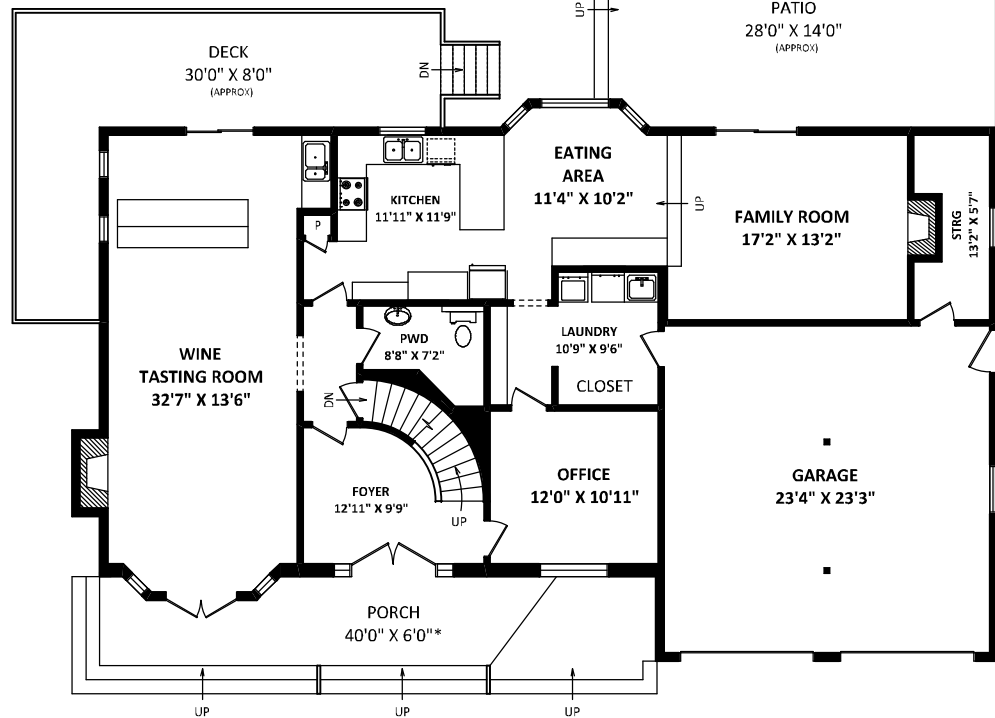
OTHER AREA(S)

GARAGE + STORAGE:	652 SQ.FT.
DECK:	350 SQ.FT.*
PORCH:	235 SQ.FT.*
PATIO:	440 SQ.FT.*
BARN:	330 SQ.FT.*
STABLES:	300 SQ.FT.*

**EXCLUDES 188 SQ.FT. OF LOW CEILING AREA(S), BOUND BY DOTTED LINES.



LOWER FLOOR: 1278 SQ.FT.



MAIN FLOOR: 1577 SQ.FT.

FLOOR PLAN BY:
[JULY 14, 2020]
SEE VIRTUAL
TEL: 604-575-1344
www.seevirtual360.com

DISCLAIMERS:
1. MEASUREMENTS ARE FOR PROMOTIONAL USE ONLY & ARE NOT INTENDED FOR CONSTRUCTION USE. ROOM DIMENSIONS ARE APPROXIMATE. MEASUREMENTS & CALCULATIONS FOR FINISHED AREAS ARE E&O INSURED.
2. FINISHED AREAS ARE ENCLOSED AREAS IN A HOUSE THAT ARE SUITABLE FOR YEAR-ROUND USE, EMBODYING WALLS, FLOORS, AND CEILINGS THAT ARE SIMILAR TO THE REST OF THE HOUSE. (ANSI Z765-2013)
3. THIS FLOOR PLAN MAY ONLY BE REPRODUCED WITH PERMISSION OF THE REALTOR(S) ON THIS FLOOR PLAN.
* ANY MEASUREMENT WITH AN ASTERISK (*) OR (APPROX) ARE APPROXIMATE AND FOR ILLUSTRATION PURPOSES ONLY AND ARE NOT E&O INSURED.

