



**winniepak**  
a winning experience

Personal Real Estate Corporation

**RE/MAX All Points Realty Grp.**

Mobile: 604-813-8000  
winniepak@remax.net

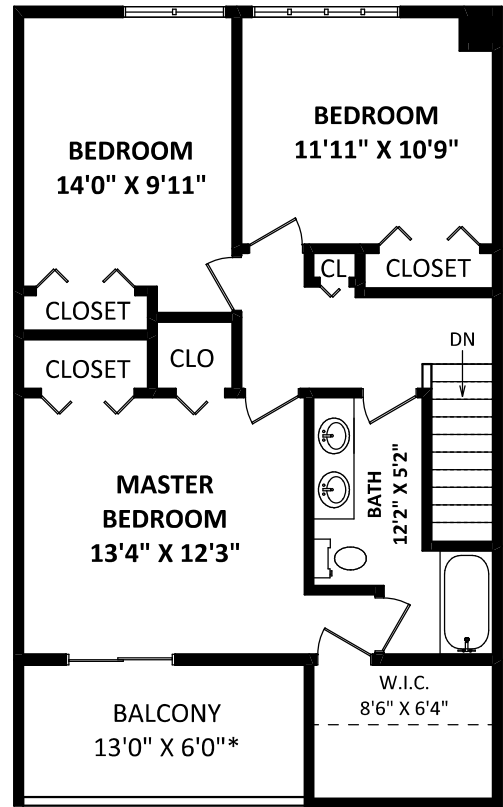
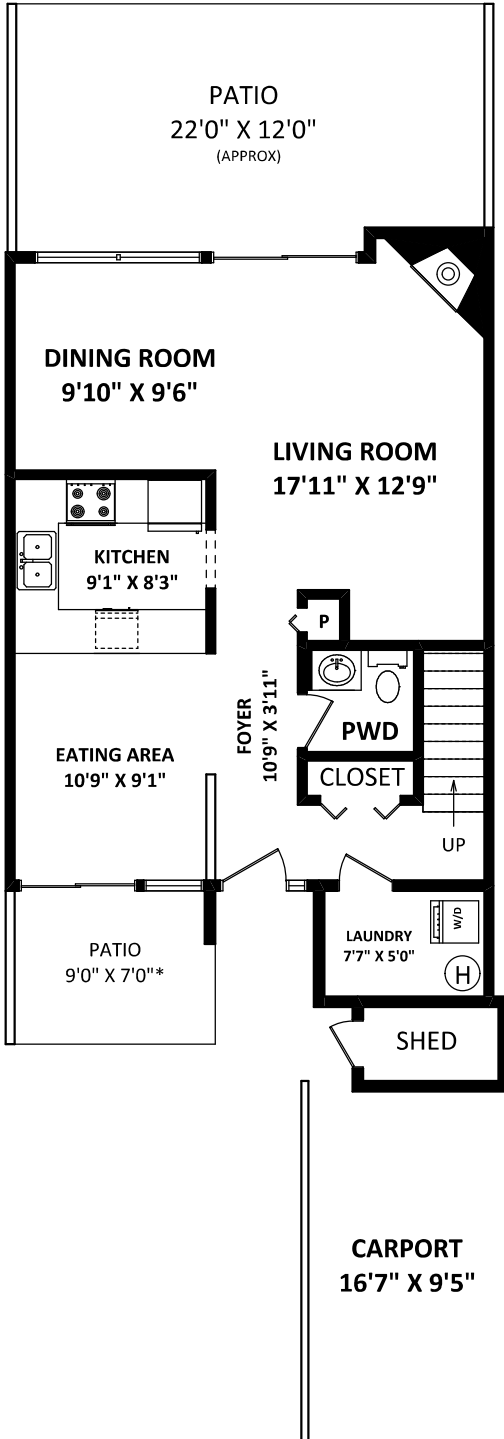
**9993 Millburn Court,**  
**Burnaby, BC**

**TOTAL FINISHED AREA: 1475 SQ.FT. \*\***

*OTHER AREA(S)*

CARPORT:	160 SQ.FT.
PATIO:	330 SQ.FT.*
BALCONY:	90 SQ.FT.*
SHED:	30 SQ.FT.*

\*\*EXCLUDES 34 SQ.FT. OF LOW CEILING AREA(S),  
BOUND BY DOTTED LINES.



**MAIN FLOOR: 739 SQ.FT.**



0 2 5 10 FT

SCALE:

DISCLAIMERS:

1. MEASUREMENTS ARE FOR PROMOTIONAL USE ONLY & ARE NOT INTENDED FOR CONSTRUCTION USE. ROOM DIMENSIONS ARE APPROXIMATE. MEASUREMENTS & CALCULATIONS FOR FINISHED AREAS ARE E&O INSURED.
  2. FINISHED AREAS ARE ENCLOSED AREAS IN A HOUSE THAT ARE SUITABLE FOR YEAR-ROUND USE, EMBODYING WALLS, FLOORS, AND CEILINGS THAT ARE SIMILAR TO THE REST OF THE HOUSE. (ANSI Z765-2013)
  3. THIS FLOOR PLAN MAY ONLY BE REPRODUCED WITH PERMISSION OF THE REALTOR(S) ON THIS FLOOR PLAN.
- \* ANY MEASUREMENT WITH AN ASTERISK (\*) OR (APPROX) ARE APPROXIMATE AND FOR ILLUSTRATION PURPOSES ONLY AND ARE NOT E&O INSURED.

FLOOR PLAN BY:

[JULY 7, 2020]



TEL: 604-575-1244  
www.seevirtual360.com